

# MAP Air Ops

## South

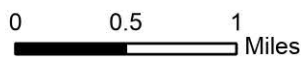
Kootenai River Complex

2022-IDIPF-000653

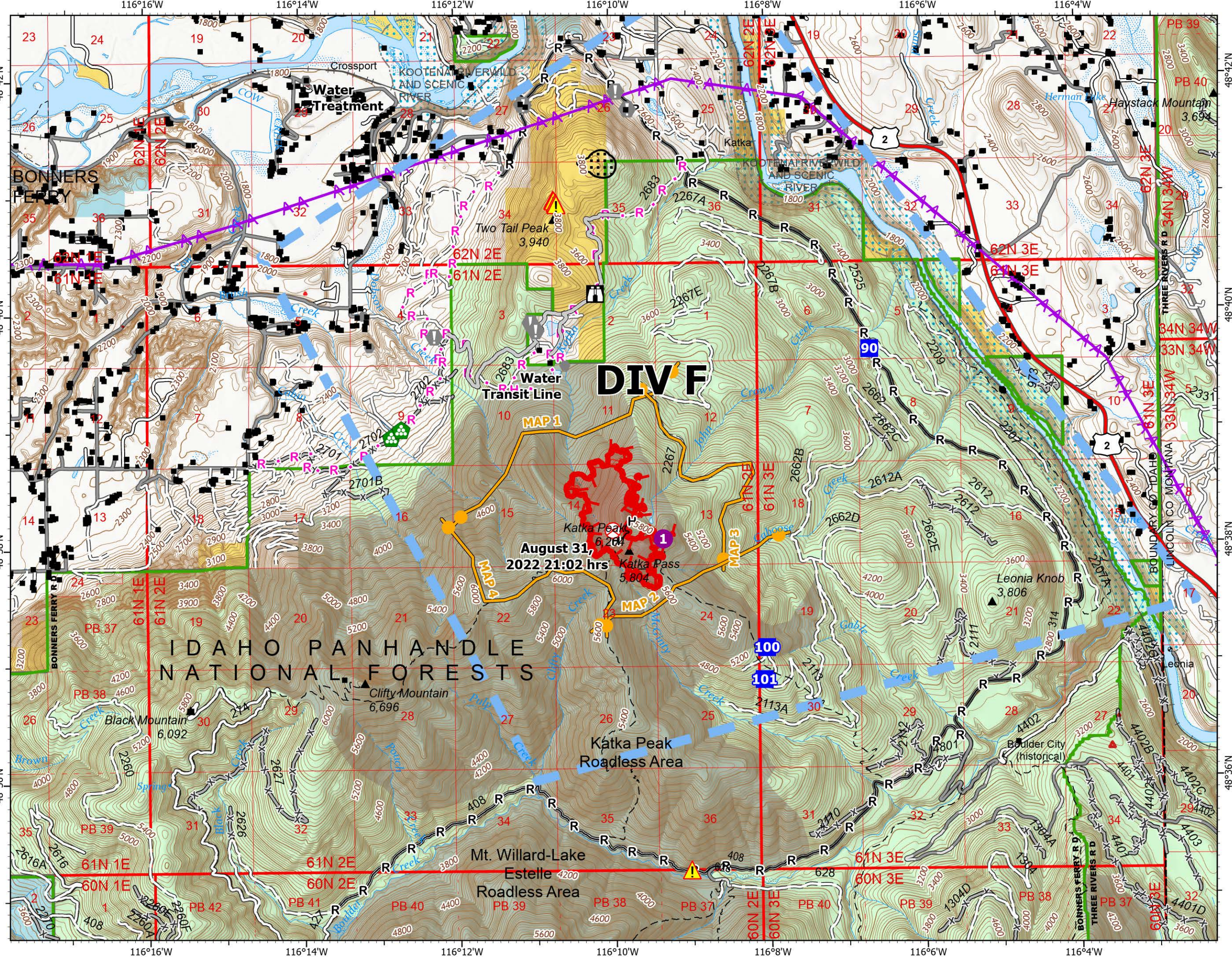
10/1/2022

22,559 acres at 9/30/2022 2102

Acres from IR



- Helispot
- Drop Point
- 🏠 Lookout
- ⊗ Fire Origin
- ⚠ Value at Risk
- Other
- 🌲 Landing or Log Deck
- ⚠ Hazard
- H— Completed Hand Line
- R— Completed Road as Line
- H Planned Hand Line
- R Planned Road as Line
- Access or Improved Road
- ☆ Aerial Hazard
- 🛑 Temporary Flight Restriction
- 🛑 Management Action Point
- 🔴 Wildfire Daily Fire Perimeter
- 🔴 IR Heat Perimeter
- 🔴 IR Scattered Heat
- 🛣 US Primary Route
- 🛣 Paved Roads
- 🛣 Dirt (Not Paved)
- 🌲 Forest Service Land



EA Gold IMT  
10/1/2022 1212  
North American 1983 Datum. LatLong Grid