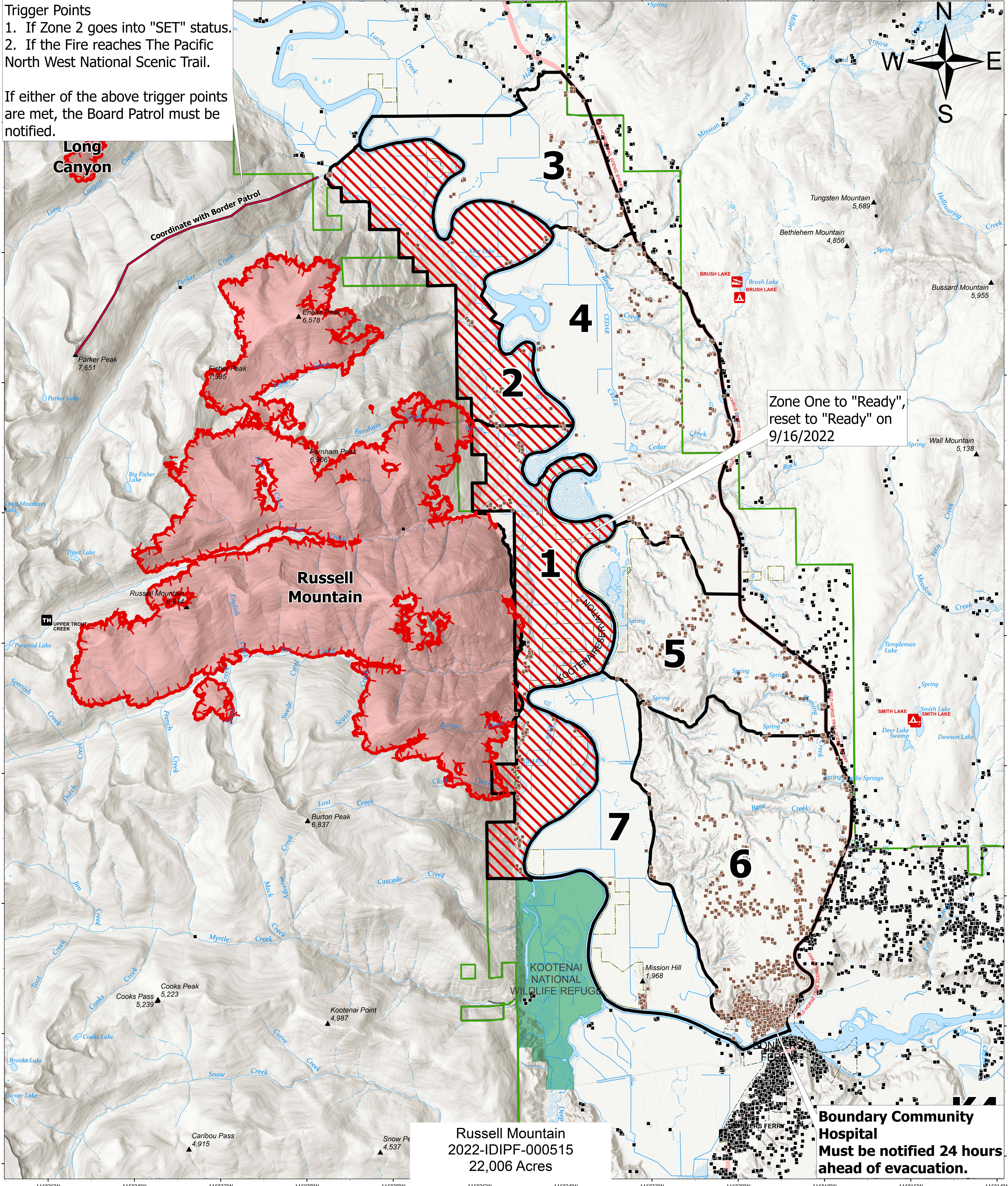


Trigger Points
 1. If Zone 2 goes into "SET" status.
 2. If the Fire reaches The Pacific North West National Scenic Trail.

If either of the above trigger points are met, the Board Patrol must be notified.



Zone One to "Ready",
 reset to "Ready" on
 9/16/2022

Russell Mountain
 2022-IDIPF-000515
 22,006 Acres

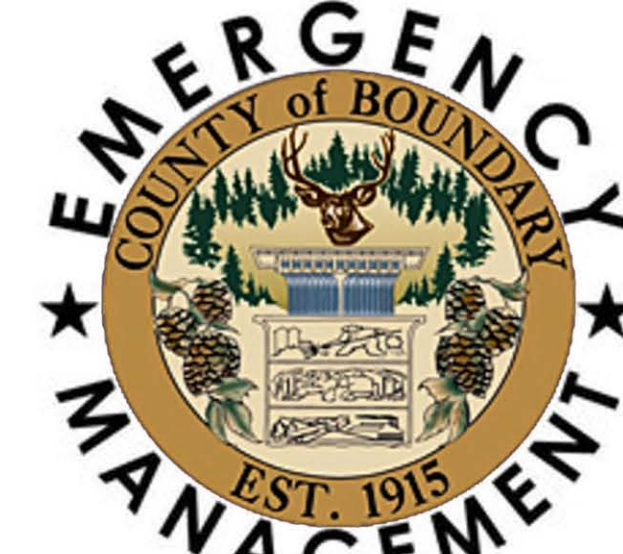
**Boundary Community
 Hospital
 Must be notified 24 hours
 ahead of evacuation.**

**Ready, Set, Go
 North**

Kootenai River Complex
 2022-IDIPF-000653
 10/1/2022
 22,559 acres at 9/30/2022 2102
 Acres from IR

- Evacuation Areas**
- Ready
 - Set
 - Go
 - Other Evacuation Areas

- Evacuation Area Structures
- Idaho Structures
- Wildfire Daily Fire Perimeter
- Administrative FS Boundary
- U.S. Fish Wildlife Service Lands



Boundary County
 Emergency Management
 Public Information
 (208) 290-5316

EA Gold IMT
 10/1/2022 12:16
 North American 1983 Datum. Lat/Long Grid

Boundary County
 Sheriff's Office
 (208)267-3151