

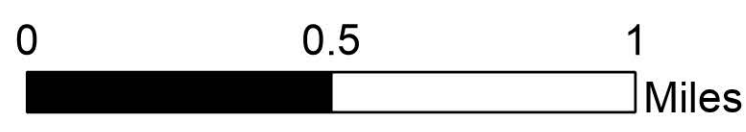
# Briefing South

Kootenai River Complex

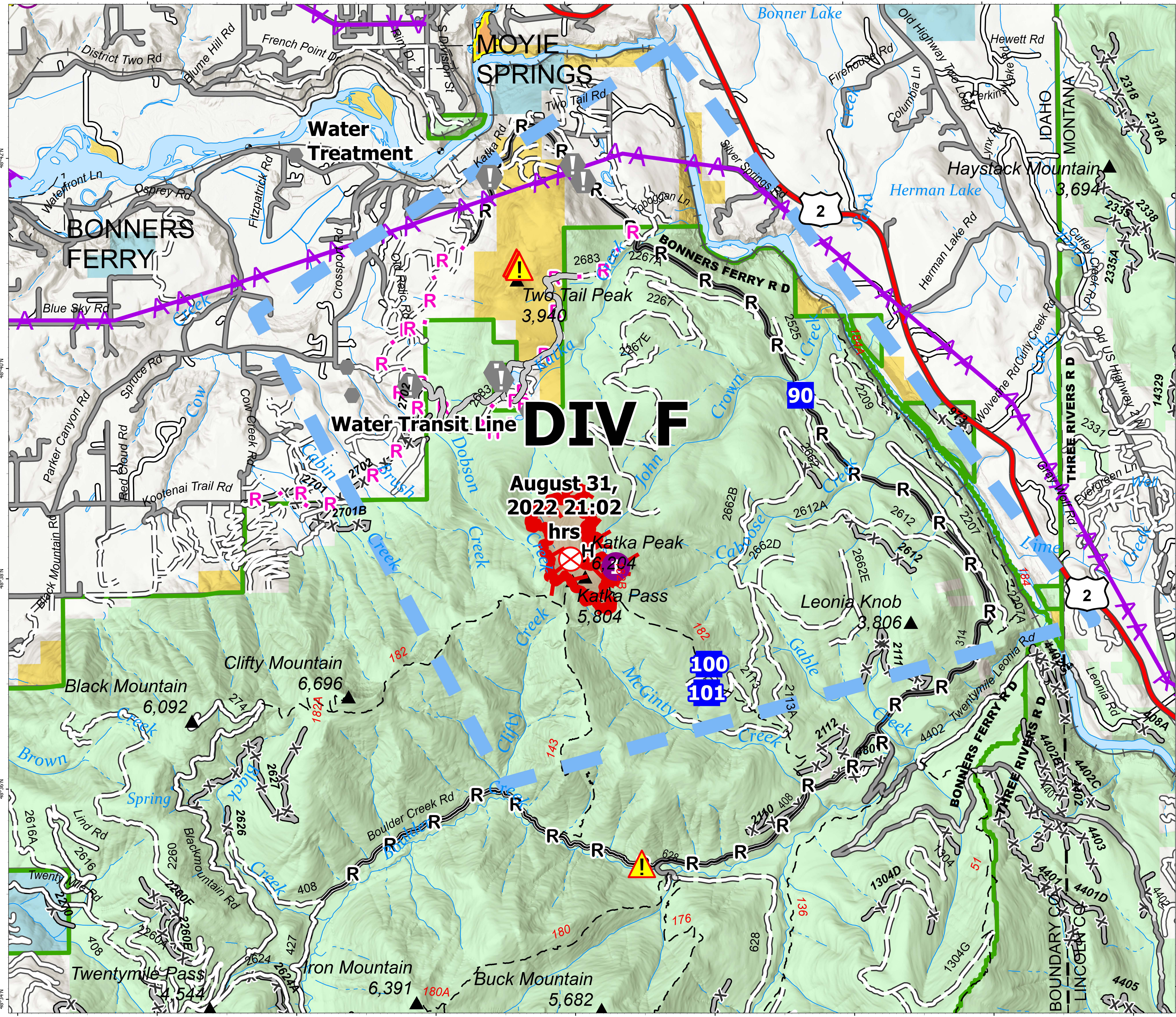
2022-IDIPF-000653

10/1/2022

22,559 acres at 9/30/2022 2102  
Acres from IR



- Helispot
- ⊕ Helibase
- Drop Point
- ▲ Camp
- ⊗ Fire Origin
- ⚠ Value at Risk
- Other
- ▲ Hazard
- H- Completed Hand Line
- R- Completed Road as Line
- H- Planned Hand Line
- R- Planned Road as Line
- Access or Improved Road
- Aerial Hazard
- Temporary Flight Restriction
- Wildfire Daily Fire Perimeter
- US Primary Route
- Paved Roads
- Dirt (Not Paved)
- American Indian Lands
- Forest Service Land
- State Public Lands
- Bureau of Land Management Lands
- Indian Reservation



EA Gold IMT  
10/1/2022 1223  
North American 1983 Datum, Lat/Long Grid