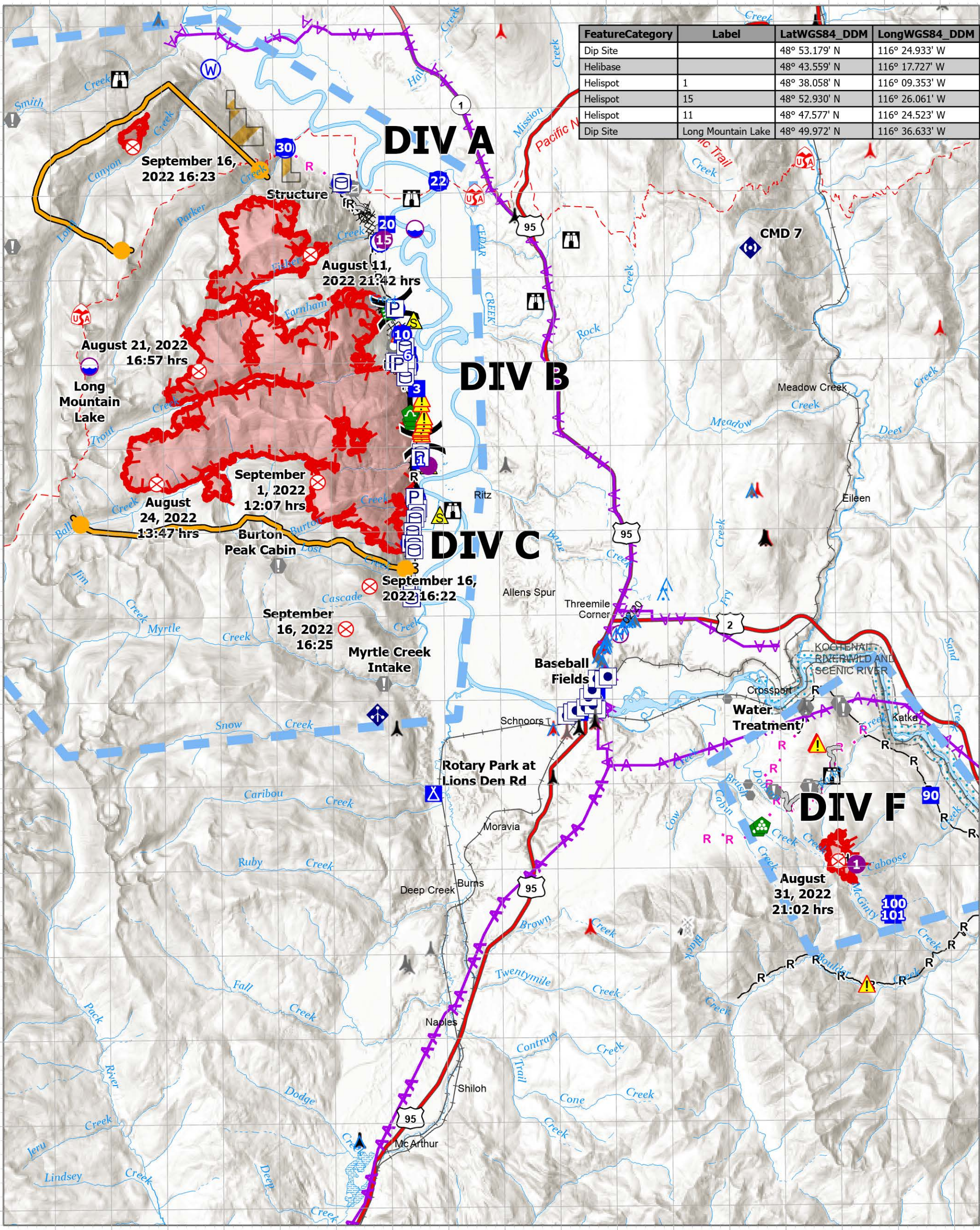


FeatureCategory	Label	LatWGS84_DDM	LongWGS84_DDM
Dip Site		48° 53.179' N	116° 24.933' W
Helibase		48° 43.559' N	116° 17.727' W
Helispot	1	48° 38.058' N	116° 09.353' W
Helispot	15	48° 52.930' N	116° 26.061' W
Helispot	11	48° 47.577' N	116° 24.523' W
Dip Site	Long Mountain Lake	48° 49.972' N	116° 36.633' W



Air Ops
Kootenai River Complex
 2022-IDIPF-000653
 10/1/2022
 22,559 acres at 9/30/2022 2102
 Acres from IR

EA Gold IMT
 10/1/2022 1208
 North American 1983 Datum. Lat/Long Grid

- ✖ Repeater and Base Station
- ▲ Tower > 200'
- ▲ Tower 30' - 200'
- ▲ Towers of Unknown Height
- Other Property
- Pump
- Water Tank
- Dip Site
- Helispot
- ⊕ Helibase
- ⌘ Division Break
- Incident Command Post
- Drop Point
- Camp
- Lookout
- ⊕ Value at Risk
- Other
- Landmark
- ⊕ Gate
- ⊕ Bridge
- ⊕ Stream Crossing
- ⊕ Landing or Log Deck
- ⊕ Culvert
- ⊕ Mobile Weather Unit
- ⊕ Repeater
- ▲ Safety Zone
- ▲ Hazard
- ⊕ Water Source
- ⊗ Completed Dozer Line
- H Completed Hand Line
- M Completed Mixed Construction Line
- R Completed Road as Line
- Planned Dozer Line
- H Planned Hand Line
- R Planned Road as Line
- ▬ Access or Improved Road
- ▬ Management Action Point
- ▬ Aerial Hazard
- ▬ Temporary Flight Restriction
- ▬ Fire Edge (Field Collection)
- ▬ Wildfire Daily Fire Perimeter
- ▬ US Primary Route
- ▬ US Secondary Route
- ▬ State Primary Route