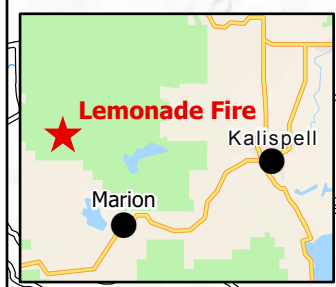
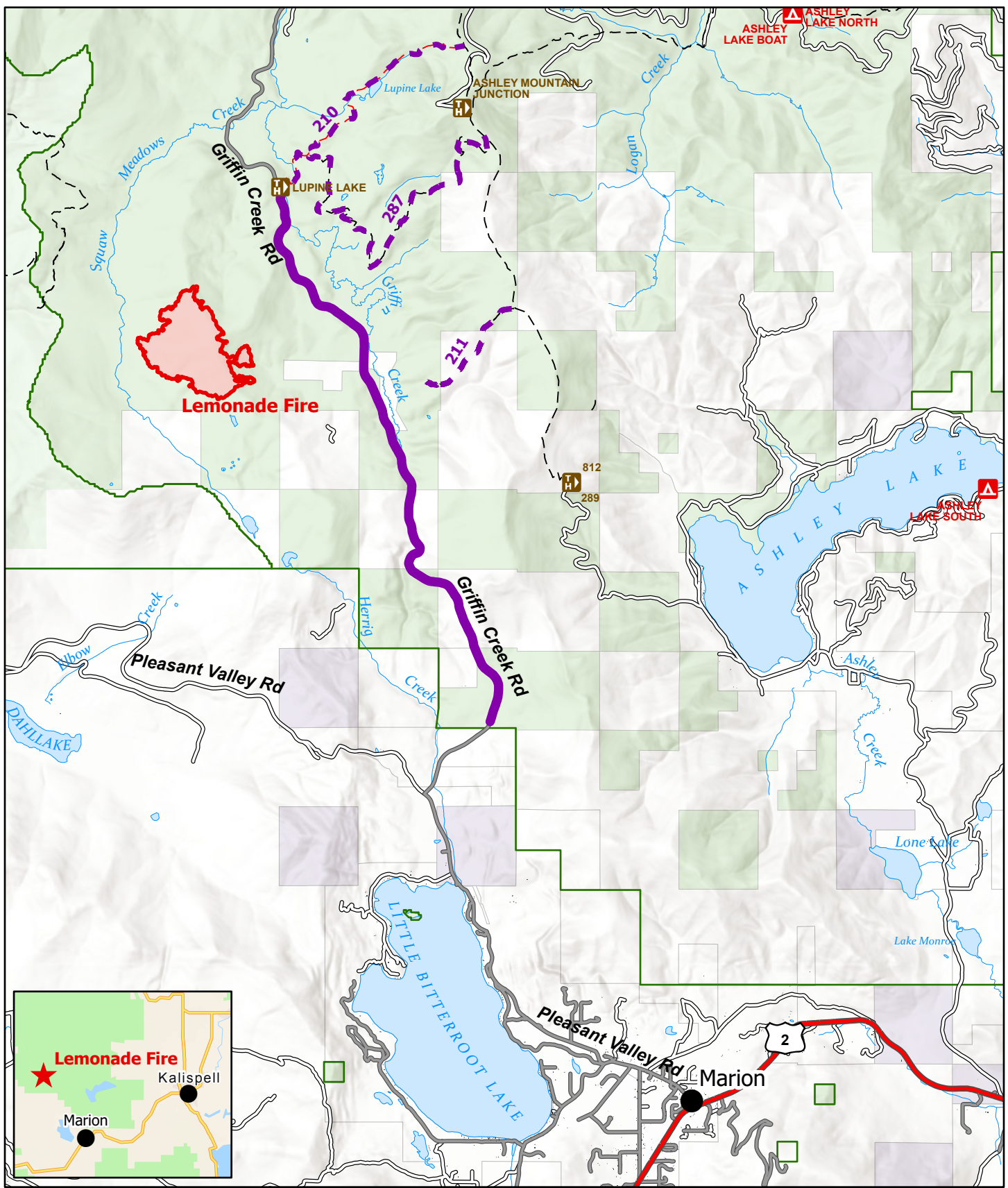


# Lemonade Fire Information

9/8/2022



**Lemonade**  
**MT-FNF-000651**  
 Fire Perimeter as of  
 09/07/2022 2200 hrs  
 636 Acres



- Closed Trail
- Closed Road
- Wildfire Daily Fire Perimeter

- Private Land
- State Land
- National Forest System (NFS) Land

0 0.5 1 Miles