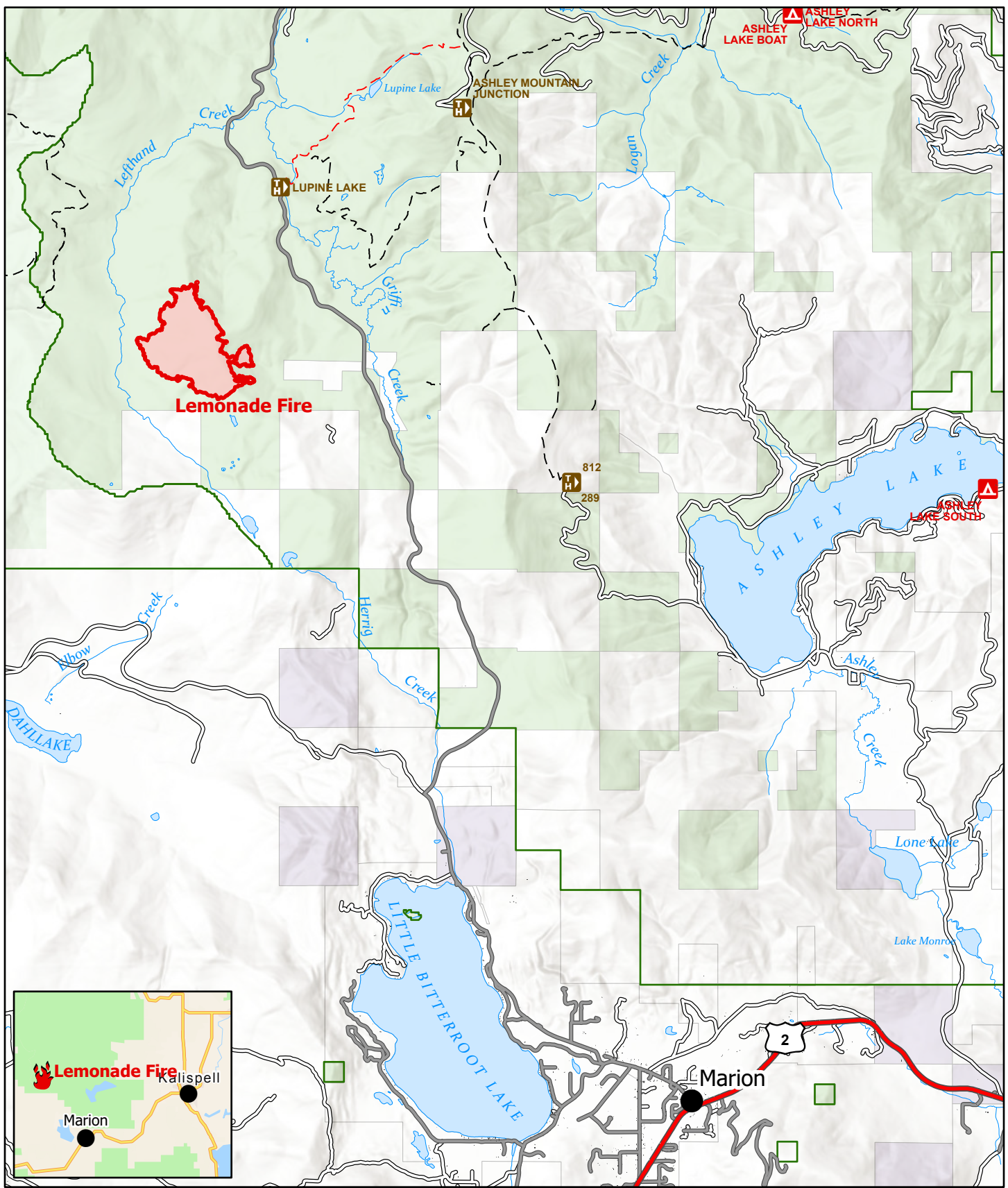


Lemonade Fire Information

9/10/2022



Lemonade
MT-FNF-000651
Fire Perimeter as of
09/09/2022 2200 hrs
660 Acres



- Wildfire Daily Fire Perimeter
- Private Land
- State Land
- National Forest System (NFS) Land

0 0.5 1 Miles

A north arrow pointing upwards, a scale bar showing 0, 0.5, and 1 mile increments, and the official logo of the Montana Department of Forestry and Fire Management. The logo features a circular emblem with a mountain, a tree, and a fire, surrounded by the text 'MONTANA DEPARTMENT OF FORESTRY AND FIRE MANAGEMENT' and the motto 'SILVAM REPERIO - INTERIORE MONTANA'.