

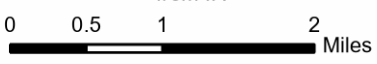
111°50'W 111°48'W 111°46'W 111°44'W 111°42'W 111°40'W

IAP

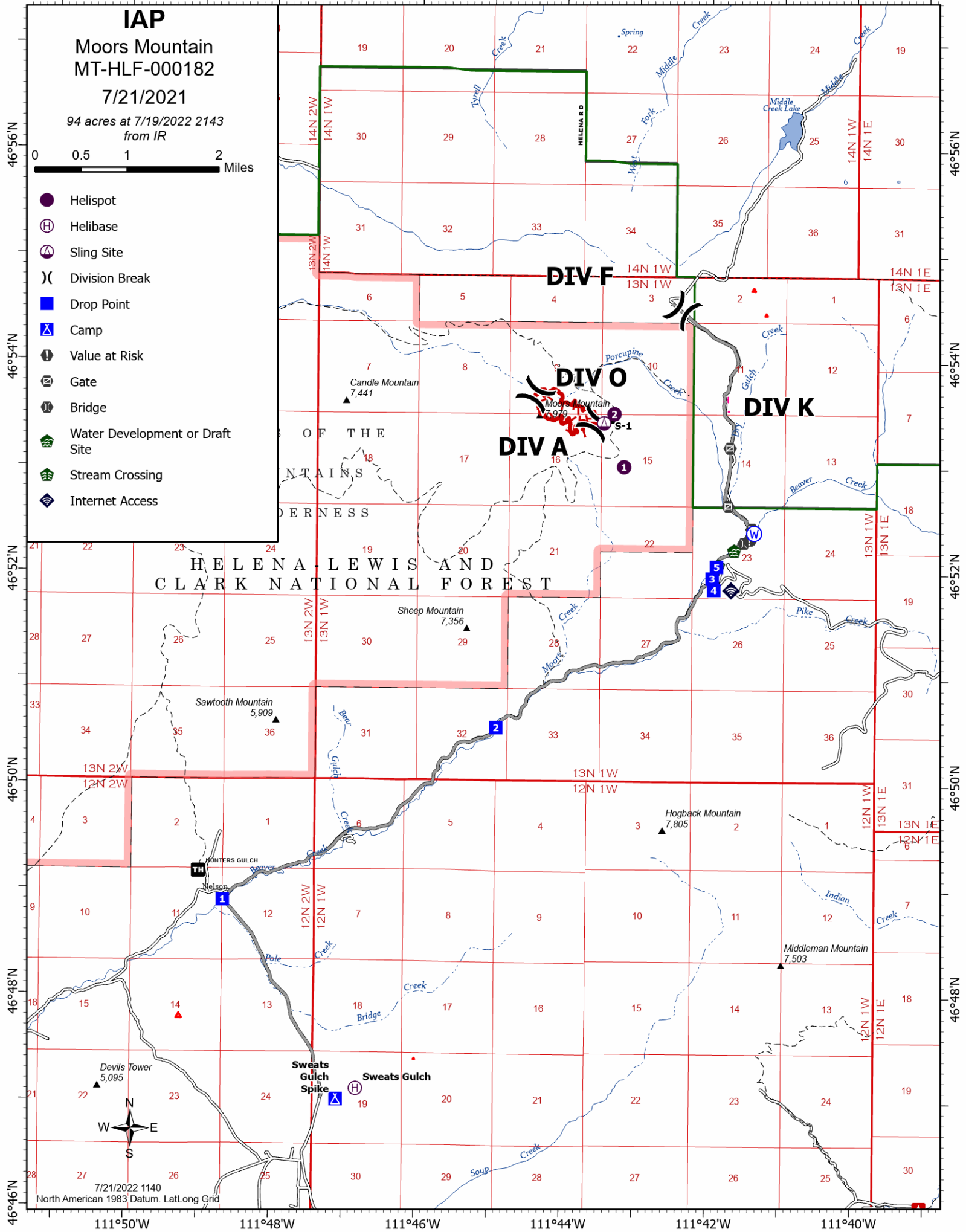
Moors Mountain MT-HLF-000182

7/21/2021

94 acres at 7/19/2022 2143
from IR



- Helispot
- ⊕ Helibase
- ⊗ Sling Site
-) (Division Break
- Drop Point
- ⚓ Camp
- ⚠ Value at Risk
- ⊘ Gate
- ⚙ Bridge
- 🏠 Water Development or Draft Site
- 🌿 Stream Crossing
- 📶 Internet Access



46°56'N
46°54'N
46°52'N
46°50'N
46°48'N
46°46'N

46°56'N
46°54'N
46°52'N
46°50'N
46°48'N
46°46'N

111°50'W 111°48'W 111°46'W 111°44'W 111°42'W 111°40'W

7/21/2022 1140
North American 1983 Datum, LatLong Grid



OF THE
MOUNTAINS
DERNESS
HELENA LEWIS AND
CLARK NATIONAL FOREST

DIV F

DIV O

DIV A

DIV K

WINTERS GULCH

Sweats Gulch
Spike

Candle Mountain
7,441

Sheep Mountain
7,356

Sawtooth Mountain
5,909

Hogback Mountain
7,805

Middleman Mountain
7,503

Devils Tower
5,095

7/21/2022 1140
North American 1983 Datum, LatLong Grid