

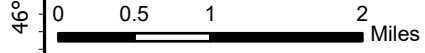
111°50'W 111°48'W 111°46'W 111°44'W 111°42'W 111°40'W

# IAP

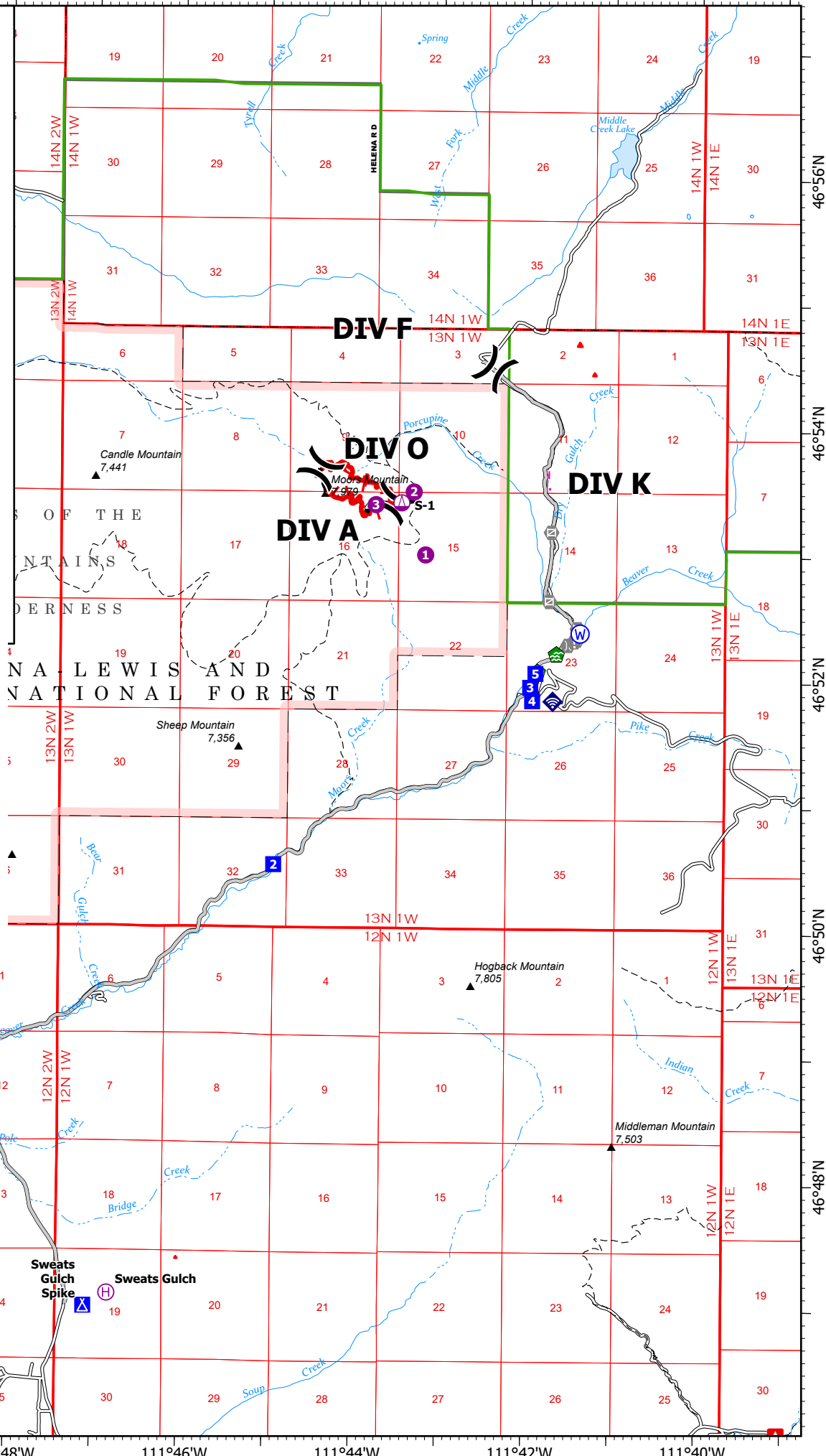
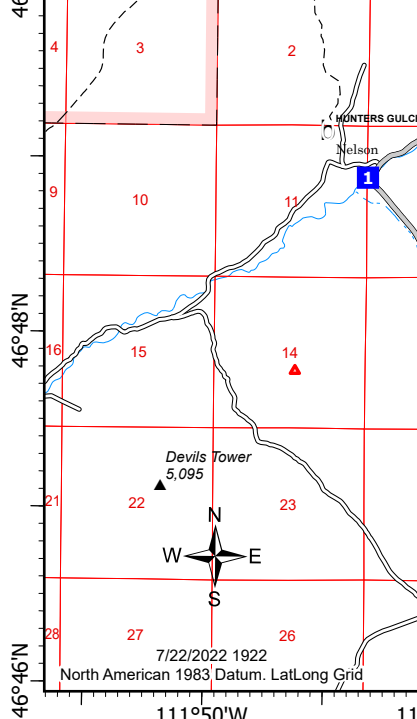
## Moors Mountain MT-HLF-000182

### 7/23/2022

94 acres at 7/19/2022 2143  
from IR



- Helispot
- ⊕ Helibase
- ⊕ Sling Site
- ) Division Break
- Drop Point
- ⚓ Camp
- ⚠ Value at Risk
- ⊠ Gate
- ⚙ Bridge
- 🏠 Water Development or Draft Site
- 🌿 Stream Crossing
- 📶 Internet Access
- Ⓜ Water Source
- H · Planned Hand Line
- Access or Improved Road
- Contained
- Uncontained
- ⬜ Wildfire Daily Fire Perimeter
- Dirt (Not Paved)
- - - Trail
- - - National Designated Trail



46°56'N 46°54'N 46°52'N 46°50'N 46°48'N 46°46'N

111°50'W 111°48'W 111°46'W 111°44'W 111°42'W 111°40'W