

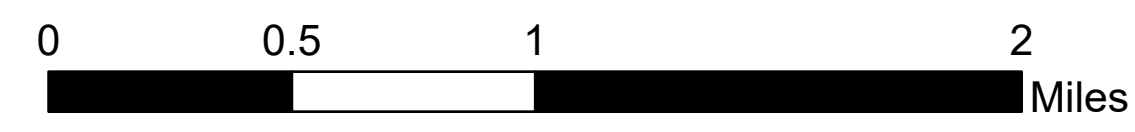
AirOps

Moors Mountain
MT-HLF-000182

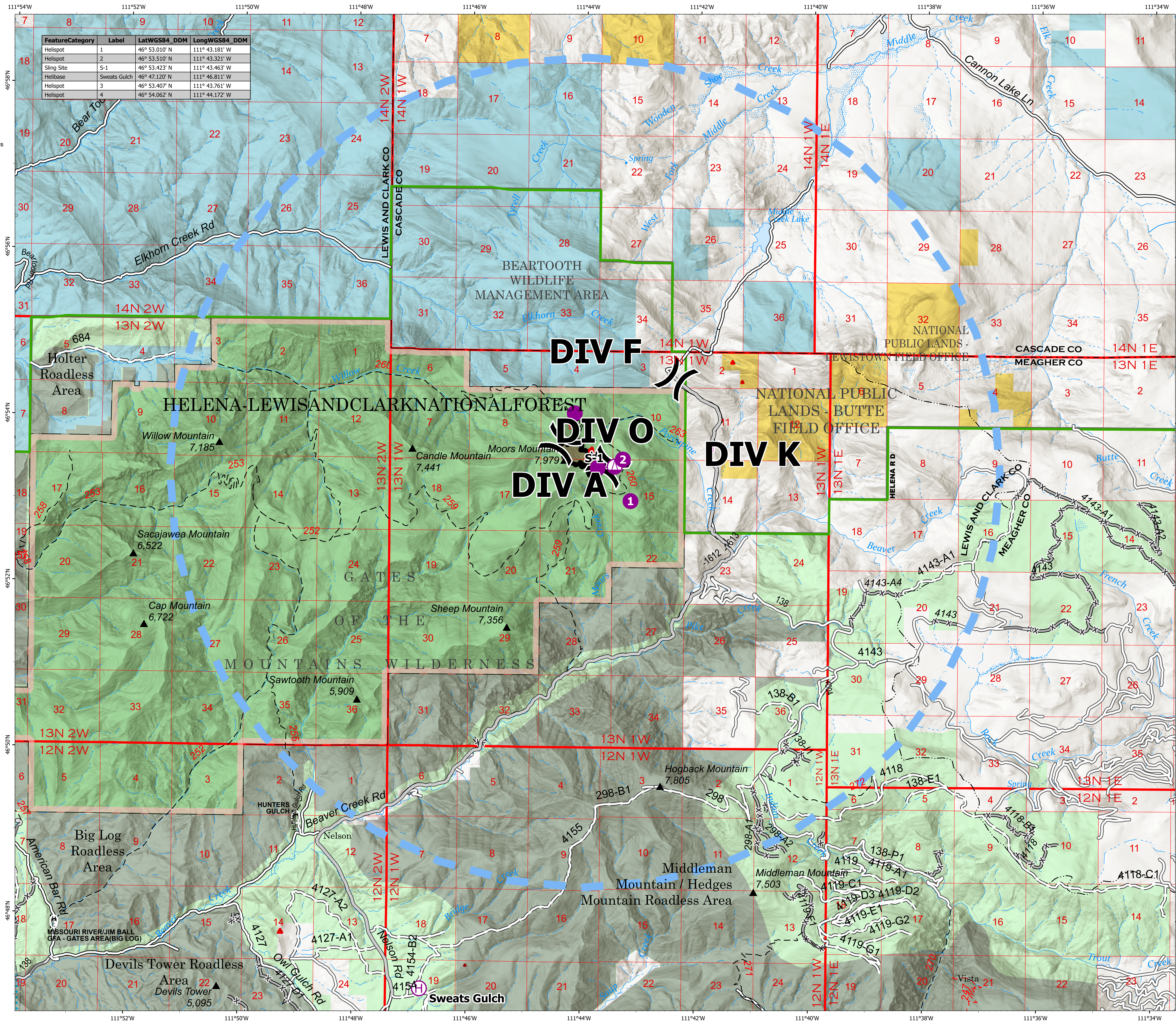
7/24/2022

98 acres at 7/23/2022 2120
from IR

FeatureCategory	Label	LatWGS84_DDM	LongWGS84_DDM
Helispot	1	46° 53.010' N	111° 43.181' W
Helispot	2	46° 53.510' N	111° 43.321' W
Sling Site	S-1	46° 53.423' N	111° 43.463' W
Helibase	Sweats Gulch	46° 47.120' N	111° 46.811' W
Helispot	3	46° 53.407' N	111° 43.761' W
Helispot	4	46° 54.062' N	111° 44.172' W



- Helispot
- H Helibase
- S Sling Site
- Division Break
- Completed Hand Line
- Planned Hand Line
- Access or Improved Road
- Temporary Flight Restriction
- Wildfire Daily Fire Perimeter
- Dirt (Not Paved)
- Forest Service Land
- State Public Lands
- Other State Lands
- Bureau of Land Management Lands



DIV F

DIV O

DIV A

DIV K

