

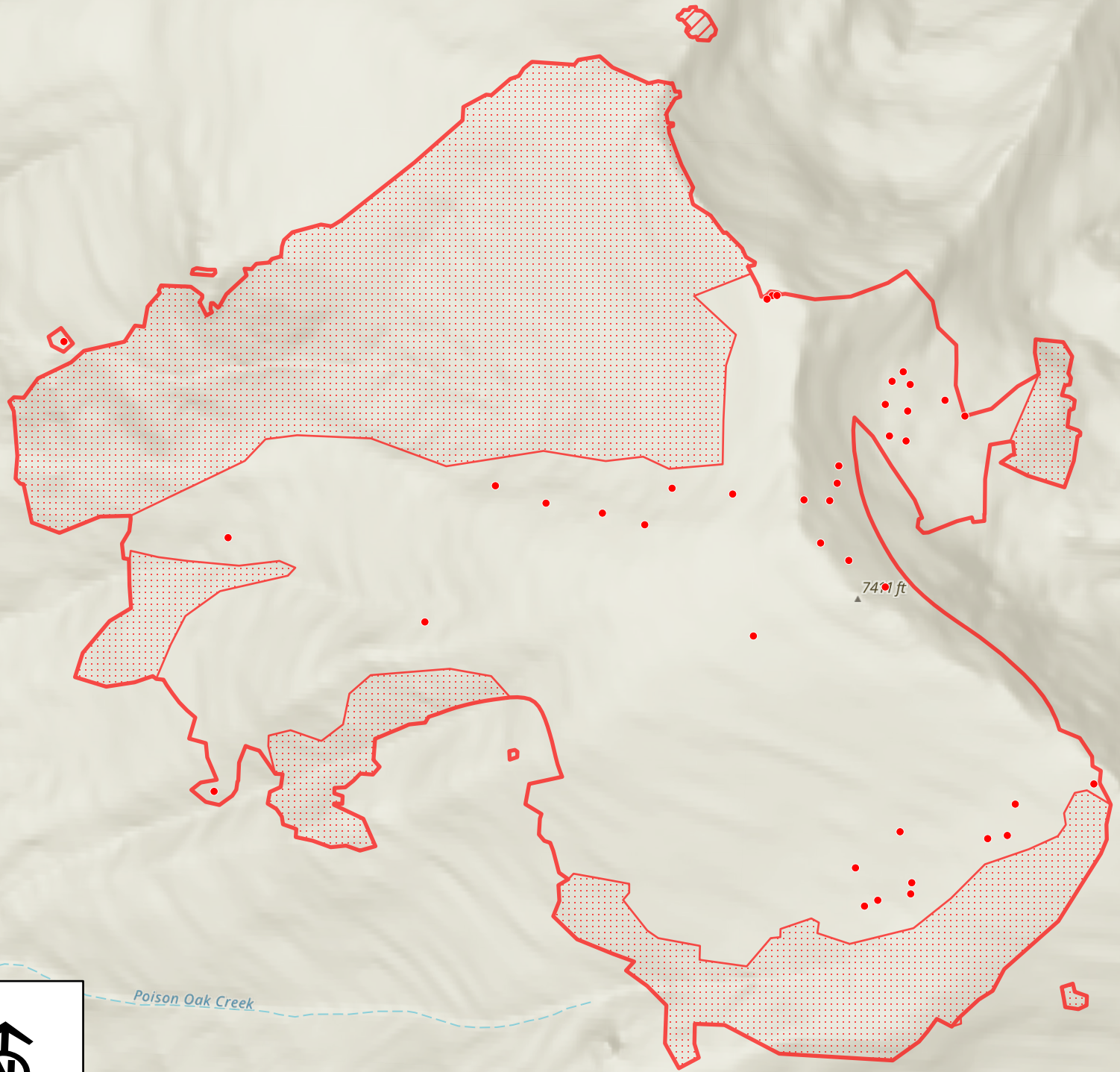
114°W 113°59'54"W 113°59'42"W 113°59'30"W 113°59'18"W 113°59'6"W 113°59'W 113°58'54"W 113°58'42"W 113°58'30"W 113°58'18"W 113°58'6"W 113°58'W 113°57'54"W 113°57'42"W 113°57'30"W 113°57'18"W 113°57'6"W 113°57'W

47°24'12"N
47°24'6"N
47°24'N
47°23'54"N
47°23'48"N
47°23'42"N
47°23'36"N
47°23'30"N
47°23'24"N
47°23'18"N
47°23'12"N
47°23'6"N
47°23'N
47°22'54"N


47°24'12"N
47°24'6"N
47°24'N
47°23'54"N
47°23'48"N
47°23'42"N
47°23'36"N
47°23'30"N
47°23'24"N
47°23'18"N
47°23'12"N
47°23'6"N
47°23'N
47°22'54"N



Infrared Map
 Redhorn (MT-FHA-000109)
 Flight Date 8/09/2022 0054 MDT
 UTM 12 Nad 83
 483 IR Acres
 IRIN: Dale Gough



- IR Isolated Heat Source
- IR Heat Perimeter
- IR Intense Heat
- IR Scattered Heat



0 0.1 0.2 0.3 Miles

Esri, NASA, NGA, USGS, FEMA, Esri Community Maps Contributors, Esri, HERE, Garmin, SafeGraph, GeoTechnologies, Inc, METI/NASA, USGS, Bureau of Land Management, EPA, NPS, US Census Bureau, USDA

113°59'54"W 113°59'42"W 113°59'30"W 113°59'18"W 113°59'6"W 113°59'W 113°58'54"W 113°58'42"W 113°58'30"W 113°58'18"W 113°58'6"W 113°58'W 113°57'54"W 113°57'42"W 113°57'30"W 113°57'18"W 113°57'6"W 113°57'W