

113°53'W

113°52.5'W

113°52'W

113°51.5'W

45°47.5'N

45°47.5'N

45°47'N

45°47'N

45°46.49'N

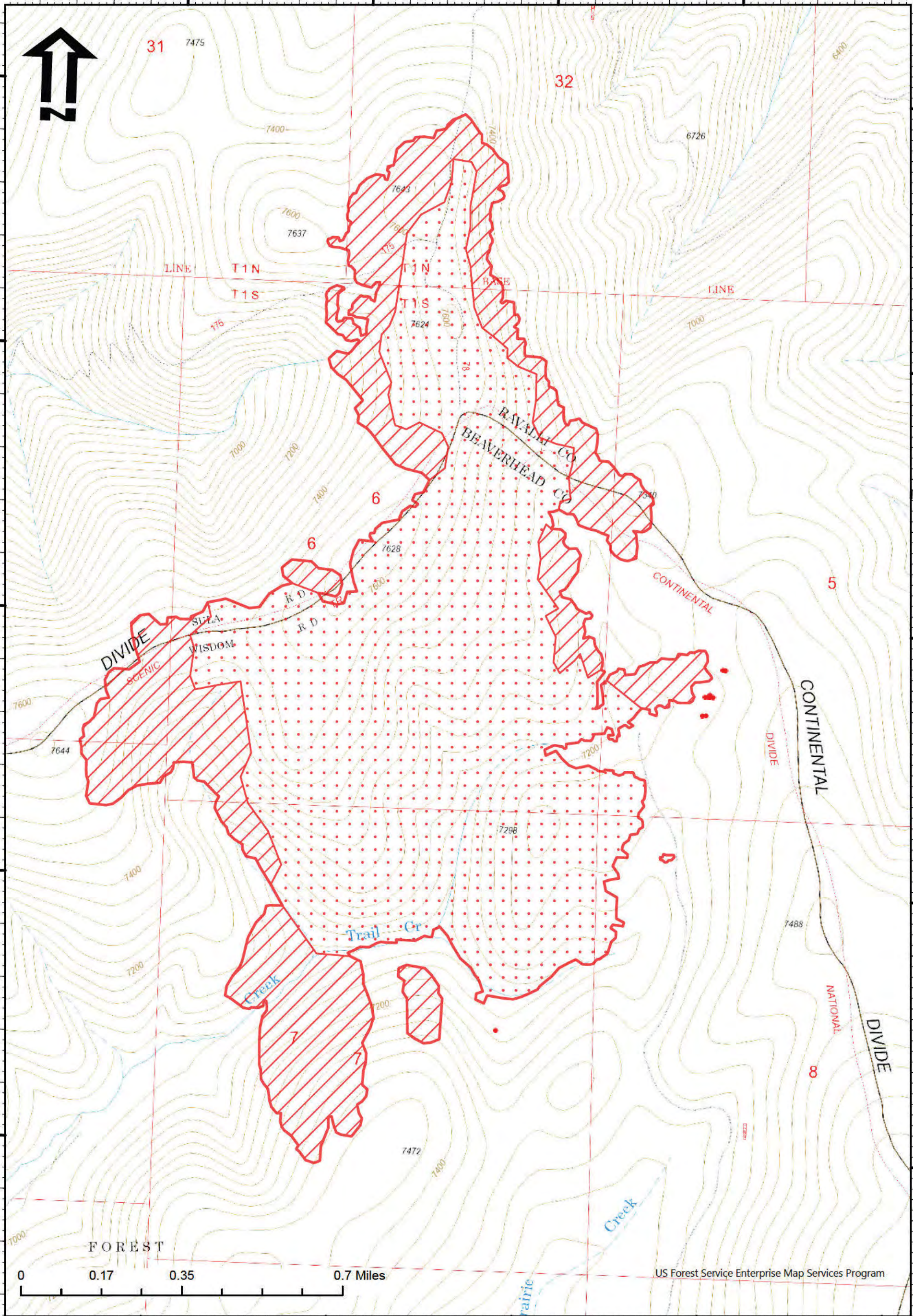
45°46.49'N

45°46'N

45°46'N

45°45.5'N

45°45.5'N



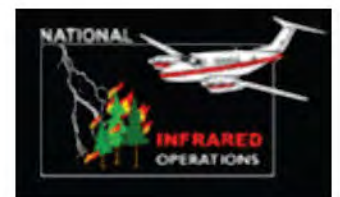
0 0.17 0.35 0.7 Miles

US Forest Service Enterprise Map Services Program

Trail Ridge Fire

MT-BDF-006286

- IR Isolated Heat Source
- ▭ IR Heat Perimeter
- ▨ IR Intense Heat
- ▭ IR Scattered Heat



IR Flown at 2121 PDT 09/01/22, 816 Interpreted Acres, IRIN: Dawn Hutchinson