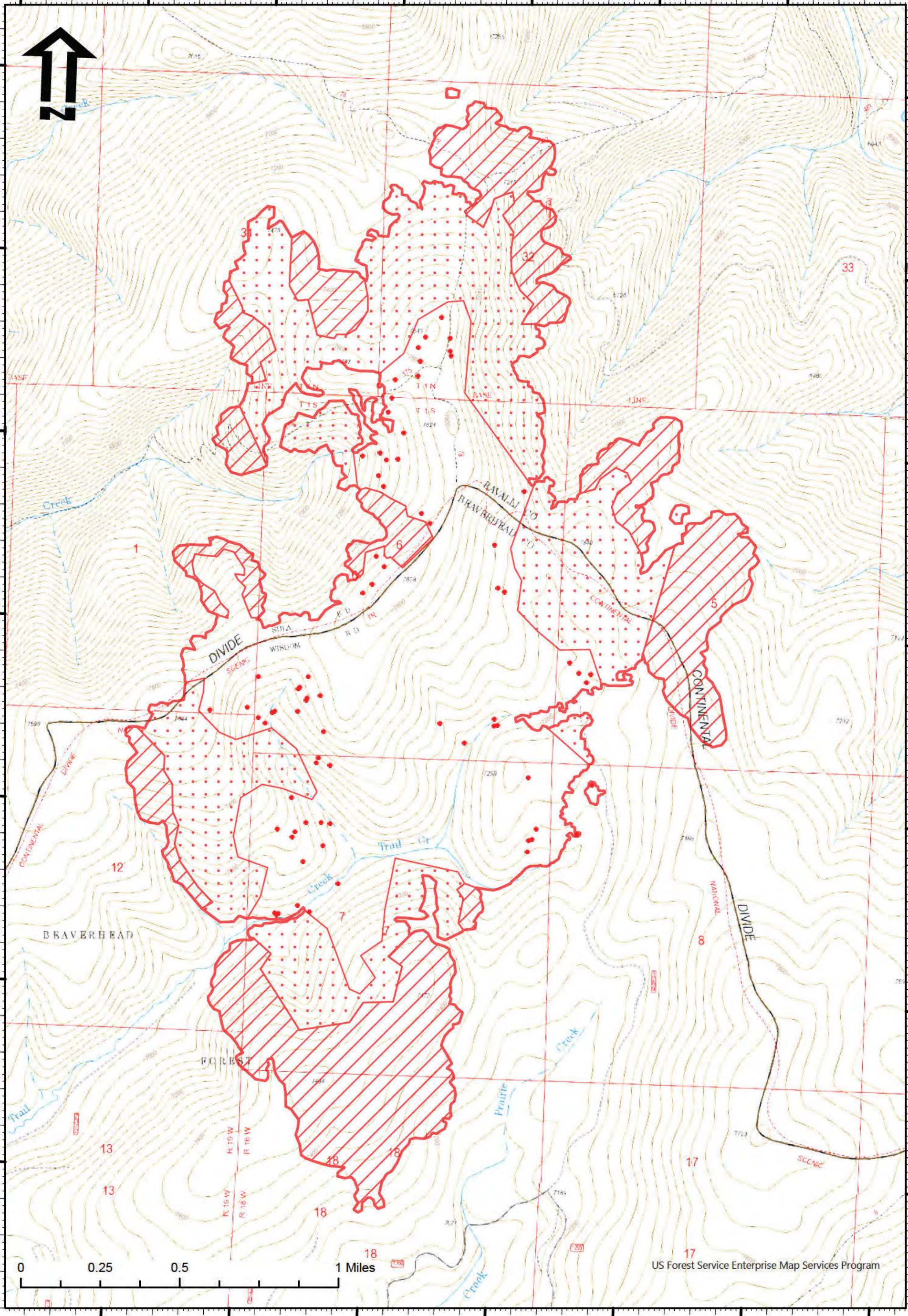


113°54'W 113°53.5'W 113°53'W 113°52.5'W 113°52'W 113°51.5'W 113°51.01'W

45°48'N  
45°47.5'N  
45°47'N  
45°46.49'N  
45°46'N  
45°45.5'N  
45°45'N

45°48'N  
45°47.5'N  
45°47'N  
45°46.49'N  
45°46'N  
45°45.5'N  
45°45'N



US Forest Service Enterprise Map Services Program

# Trail Ridge Fire

## MT-BDF-006286



- IR Isolated Heat Source
- ▭ IR Heat Perimeter
- ▨ IR Intense Heat
- ▭ IR Scattered Heat

IR Flown at 2125 PDT 09/03/22, 2,020 Interpreted Acres, IRIN: Dawn Hutchinson