


113°59'W 113°58'W 113°57'W 113°56'W 113°55'W 113°54'W 113°53'W 113°52'W 113°51'W 113°50'W 113°49'W 113°48'W 113°47'W 113°46'W 113°45'W 113°44'W 113°43'W 113°42'W 113°41'W 113°40'W 113°39'W

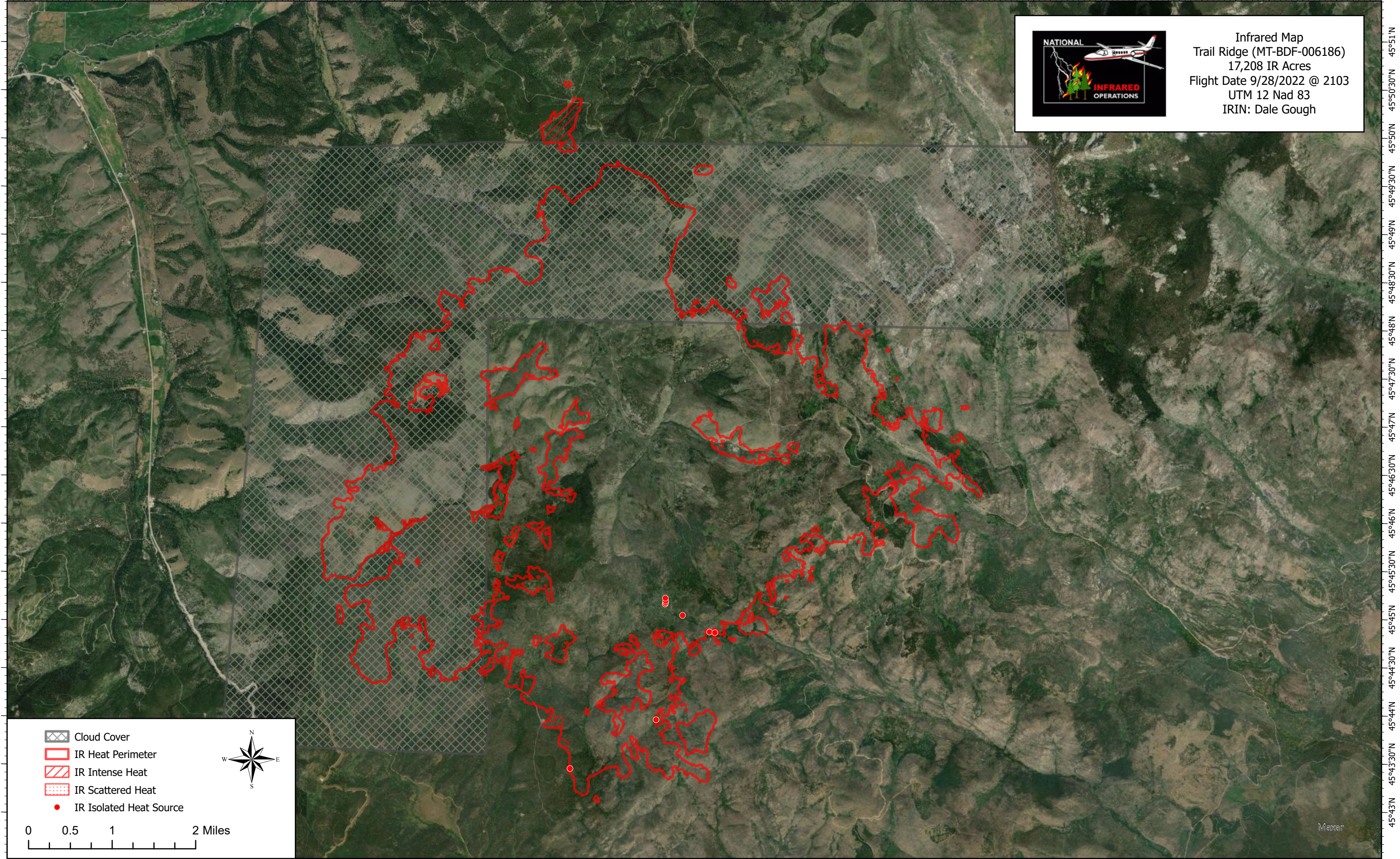
45°50'30"N
45°50'N
45°49'30"N
45°49'N
45°48'30"N
45°48'N
45°47'30"N
45°47'N
45°46'30"N
45°46'N
45°45'30"N
45°45'N
45°44'30"N
45°44'N
45°43'30"N
45°43'N
45°42'30"N

45°51'N
45°50'30"N
45°50'N
45°49'30"N
45°49'N
45°48'30"N
45°48'N
45°47'30"N
45°47'N
45°46'30"N
45°46'N
45°45'30"N
45°45'N
45°44'30"N
45°44'N
45°43'30"N
45°43'N
45°42'30"N



NATIONAL
INFRARED
OPERATIONS

Infrared Map
Trail Ridge (MT-BDF-006186)
17,208 IR Acres
Flight Date 9/28/2022 @ 2103
UTM 12 Nad 83
IRIN: Dale Gough



113°58'30"W 113°57'30"W 113°56'30"W 113°55'30"W 113°54'30"W 113°53'30"W 113°52'30"W 113°51'30"W 113°50'30"W 113°49'30"W 113°48'30"W 113°47'30"W 113°46'30"W 113°45'30"W 113°44'30"W 113°43'30"W 113°42'30"W 113°41'30"W 113°40'30"W 113°39'30"W 113°38'30"W