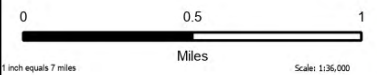
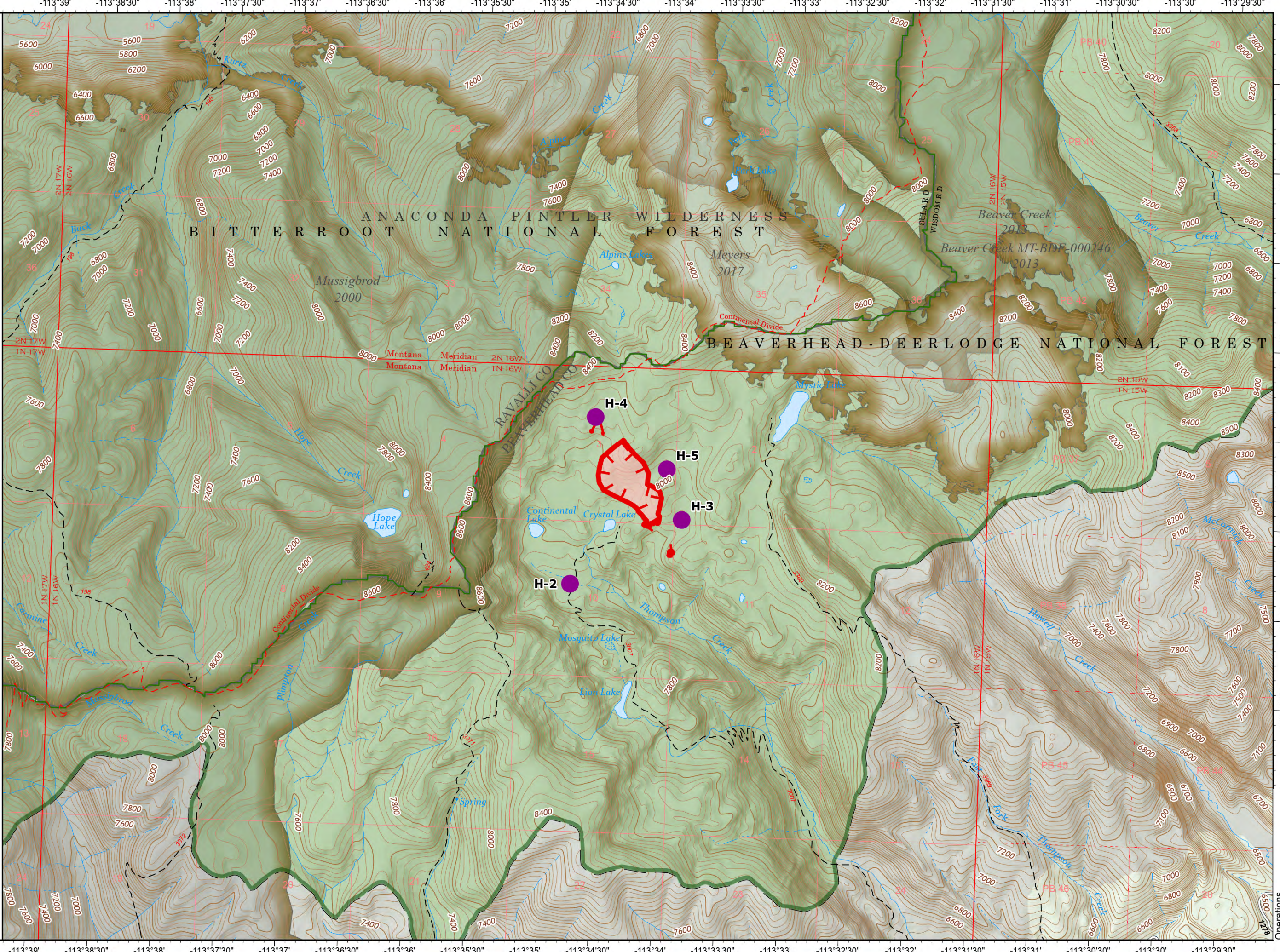


Operations

Thompson Creek
MT-BDF-006298
75 acres
9/6/2022

Fire perimeter updated from on

- Helispot
- Uncontained
- ▭ Wildfire Daily Fire Perimeter
- - - National Designated Trail
- - - Trail
- ~ Dirt Road
- ~ Dirt (Not Paved)
- ▭ Administrative FS Boundary
- ▭ Ranger District Boundary
- ▭ FS Wilderness Boundary
- ▭ USFS Roadless Areas
- ▭ Federal Wilderness Boundary
- ▭ Forest Service Land
- - - State Boundary
- - - County Boundary



NR Remote Incident Support
9/6/2022 07:42
North American 1983
Datum: LatLong Grid

Operations