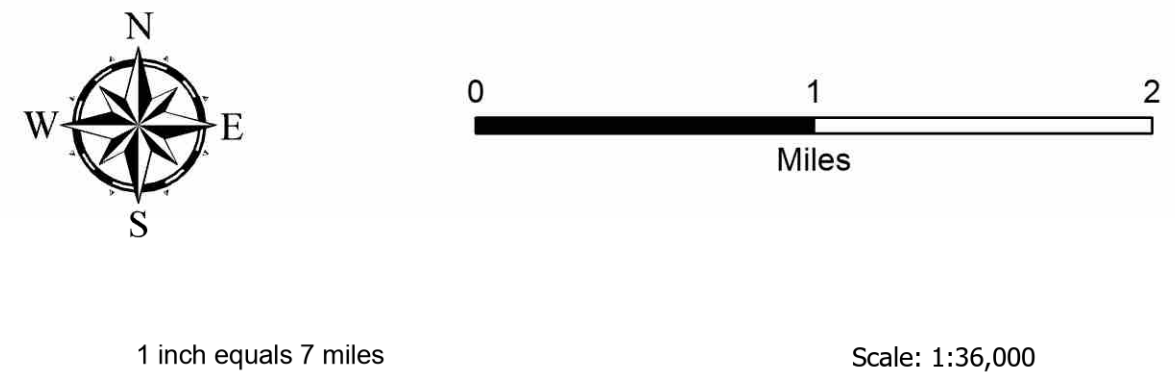


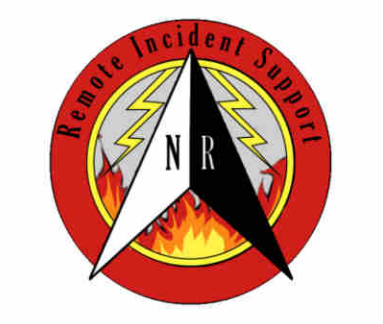
Operations

Trail Ridge
 MT-BDF-006286
 17157 acres

9/22/2022
 Fire perimeter updated from
 IR on 9/19/22 2139hrs



- | | | | |
|--|--|---|---|
| <ul style="list-style-type: none"> Pump Dip Site Helispot Division Break Incident Command Post Drop Point Lookout Water Development or Draft Site Repair Point Water Source Completed Dozer Line | <ul style="list-style-type: none"> H- Completed Hand Line M- Completed Mixed Construction Line R- Completed Road as Line Planned Dozer Line Planned Fuel Break H Planned Hand Line R Planned Road as Line Access or Improved Road Evacuation Zone Temporary Flight Restriction Uncontained Wildfire Daily Fire Perimeter | <ul style="list-style-type: none"> Ranger District Office Campground Trailhead Ski Area Alpine Trail National Designated Trail US Primary Route State Primary Route Paved Gravel Road Dirt Road Unimproved Road | <ul style="list-style-type: none"> Forest Service Roads Closed Paved Roads Dirt (Not Paved) Administrative FS Boundary FS Wilderness Boundary USFS Roadless Areas Federal Wilderness Boundary State Public Lands Bureau of Land Management Lands National Park Service Lands Structures |
|--|--|---|---|



NR Remote Incident Support
 9/22/2022 0631
 North American 1983 Datum, Lat,Long Grid

Operations