

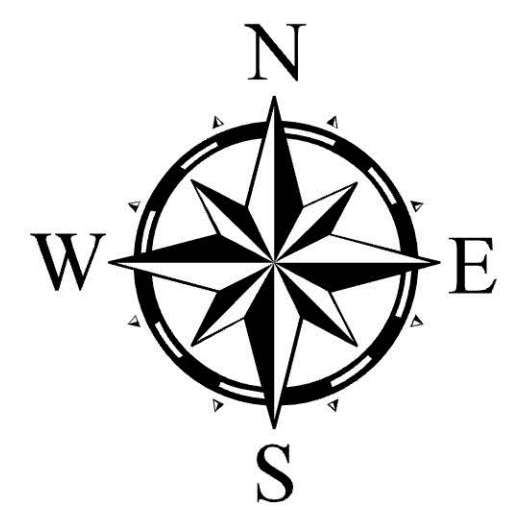
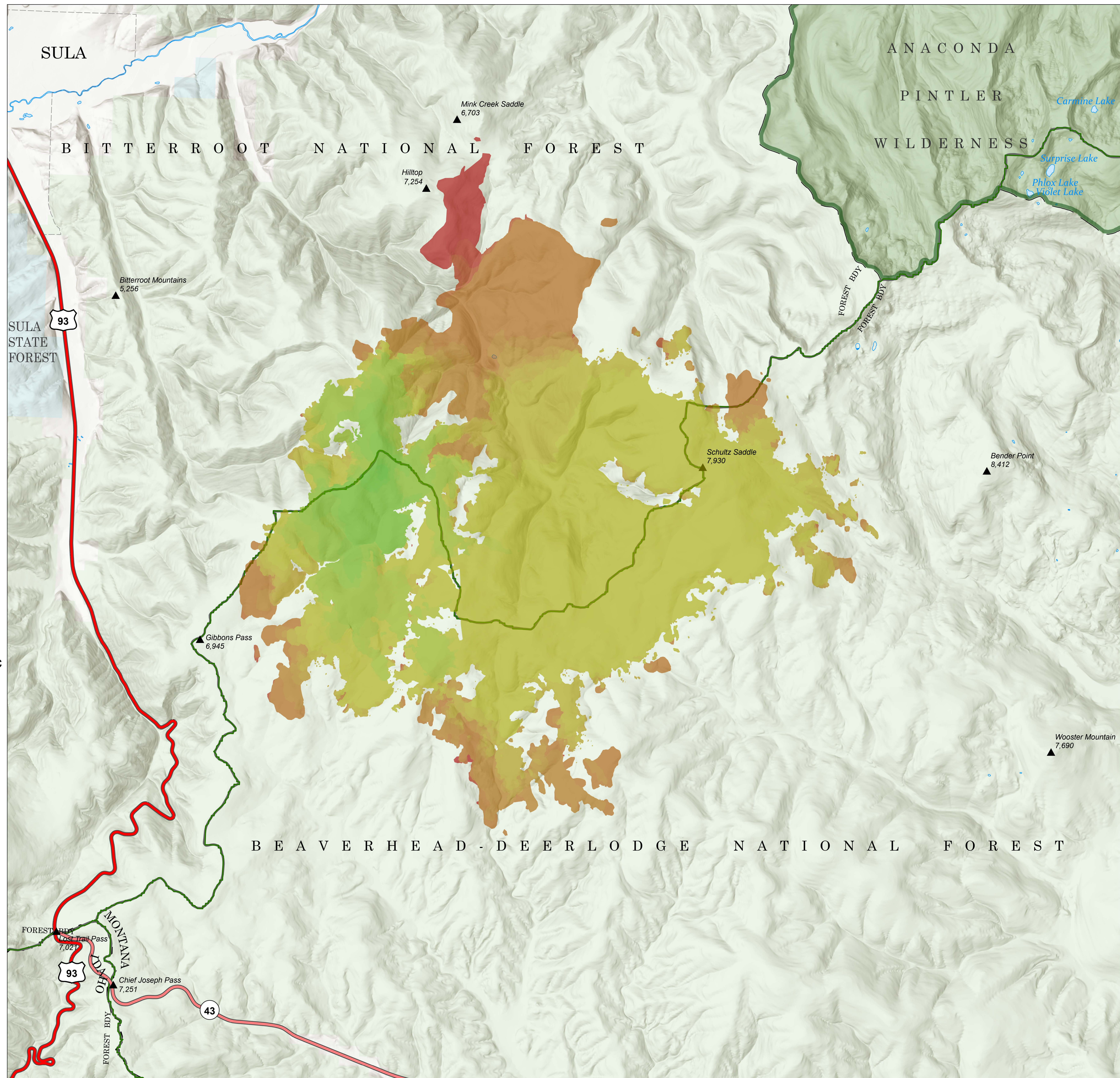
# Fire Progression

Trail Ridge  
MT-BDF-006286  
17,574 acres

Fire perimeter updated from  
IR on 9/29/22 1500hrs

9/29/2022

20220829 @ 1752	14ac	+14ac
20220830 @ 1925	64ac	+50ac
20220831 @ 2044	517ac	+453ac
20220901 @ 2121	813ac	+296ac
20220902 @ 2033	1,287ac	+474ac
20220903 @ 2125	2,019ac	+732ac
20220904 @ 2235	2,842ac	+823ac
20220905 @ 1300	2,967ac	+125ac
20220907 @ 0105	10,874ac	+7,907ac
20220907 @ 2355	12,503ac	+1,629ac
20220909 @ 0107	13,199ac	+696ac
20220909 @ 2258	13,455ac	+256ac
20220910 @ 2255	13,788ac	+333ac
20220911 @ 2243	15,006ac	+1,218ac
20220913 @ 0827	17,043ac	+2,037ac
20220914 @ 0644	17,070ac	+27ac
20220917 @ 0703	17,085ac	+15ac
20220919 @ 0625	17,139ac	+54ac
20220920 @ 0736	17,157ac	+18ac
20220926 @ 2250	17,208ac	+50ac
20220929 @ 0733	17,574ac	+367ac



1 inch equals 5 miles

NR Remote Incident Support  
9/29/2022 1831  
North American 1983 Datum,  
LatLong Grid



Scale: 1:24,000

Fire Progression