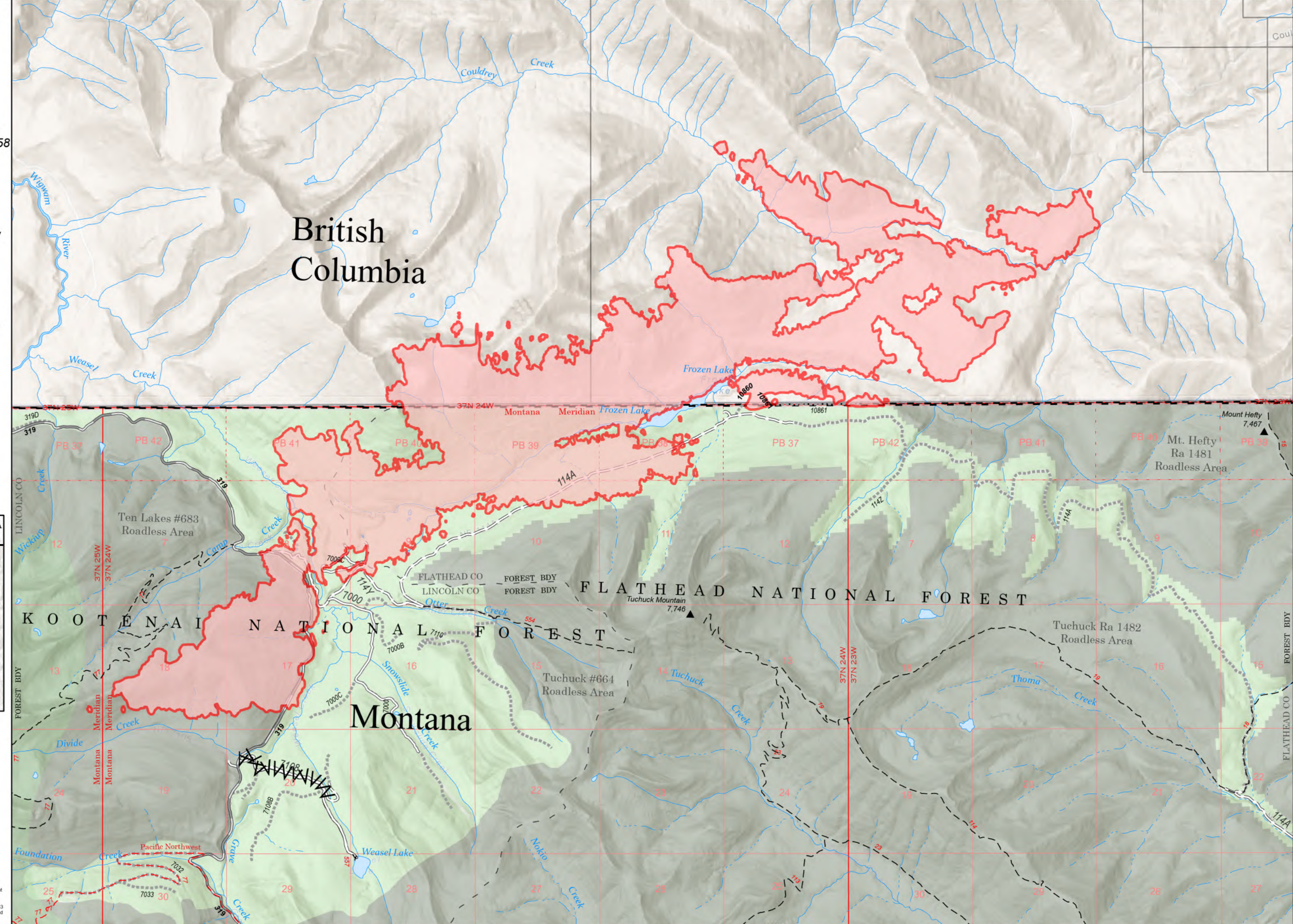


-114°47'30" -114°47' -114°46'30" -114°46' -114°45'30" -114°45' -114°44'30" -114°44' -114°43'30" -114°43' -114°42'30" -114°42' -114°41'30" -114°41' -114°40'30" -114°40' -114°39'30" -114°39' -114°38'30" -114°38' -114°37'30" -114°37' -114°36'30" -114°36' -114°35'30" -114°35' -114°34'30"

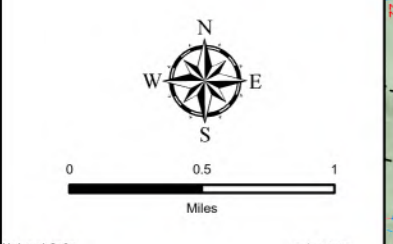
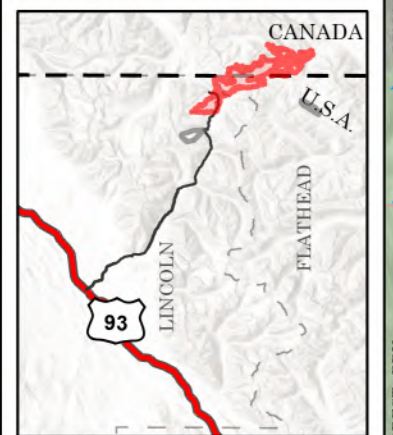


-114°47'30" -114°47' -114°46'30" -114°46' -114°45'30" -114°45' -114°44'30" -114°44' -114°43'30" -114°43' -114°42'30" -114°42' -114°41'30" -114°41' -114°40'30" -114°40' -114°39'30" -114°39' -114°38'30" -114°38' -114°37'30" -114°37' -114°36'30" -114°36' -114°35'30" -114°35' -114°34'30"

Public Information
Weasel
MTKNF-000123
5001 acres
8/24/2022

Fire perimeter updated from
Acres from IR on 08/22/22 2158

-  Wildfire Perimeter
-  International Boundary
-  Gravel Road
-  Dirt Road
-  Unimproved Road
-  Forest Service Land
-  USFS Roadless Areas






NRI Remote Incident Support
 8/24/2022 07:11
 North American 1983
 Datum: LatLong Grid

Public Information