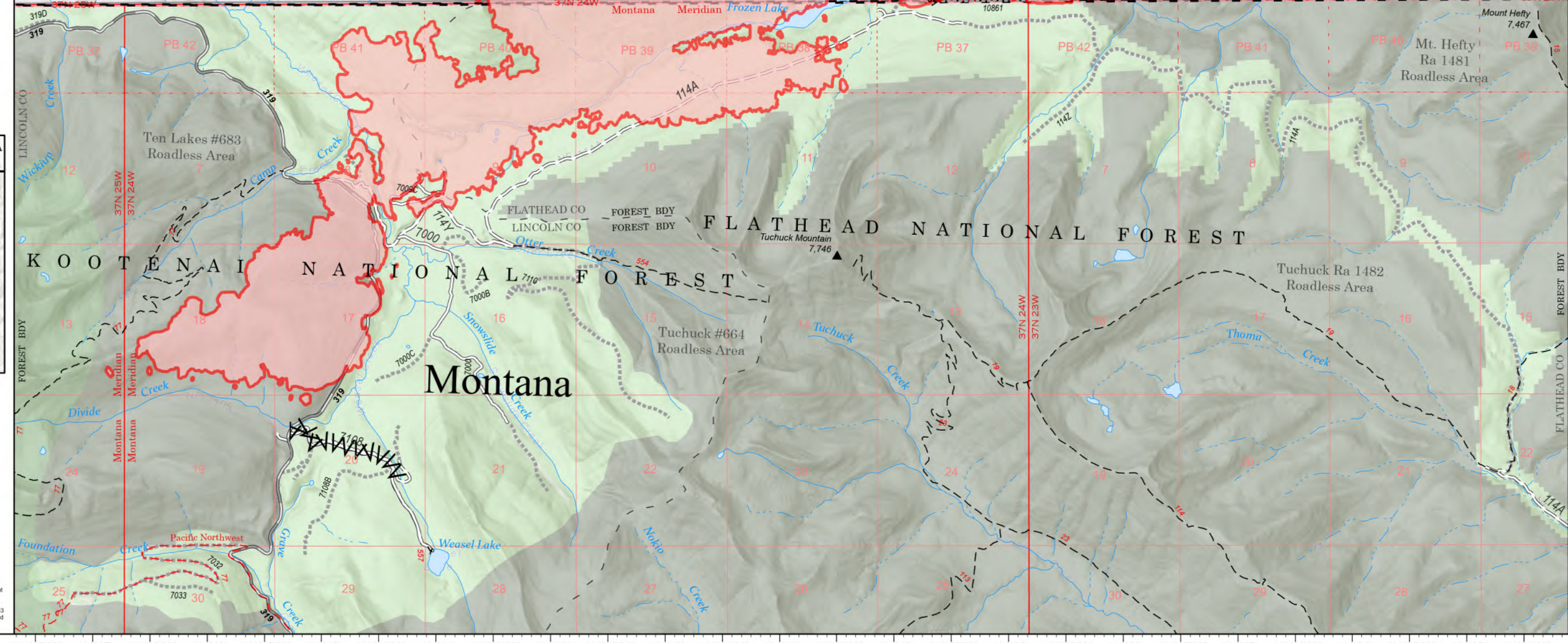
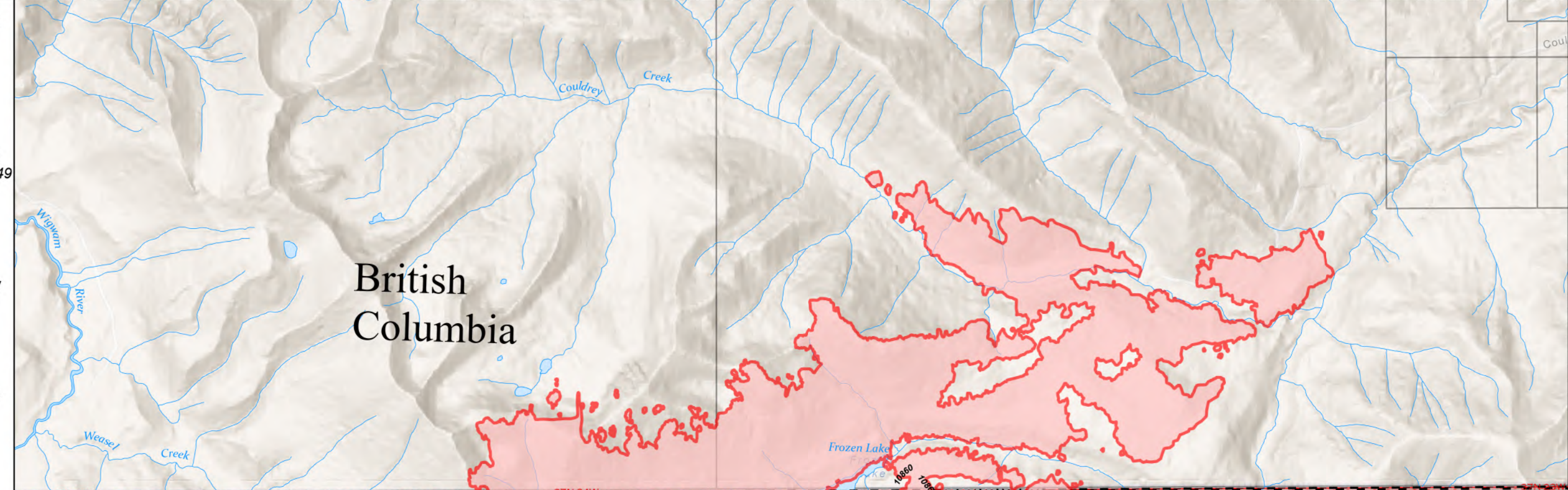


-114°47'30" -114°47' -114°46'30" -114°46' -114°45'30" -114°45' -114°44'30" -114°44' -114°43'30" -114°43' -114°42'30" -114°42' -114°41'30" -114°41' -114°40'30" -114°40' -114°39'30" -114°39' -114°38'30" -114°38' -114°37'30" -114°37' -114°36'30" -114°36' -114°35'30" -114°35' -114°34'30"



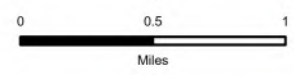
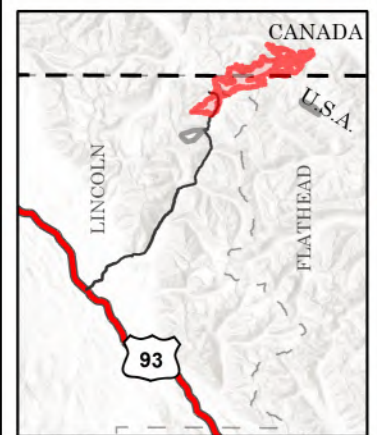
-114°47'30" -114°47' -114°46'30" -114°46' -114°45'30" -114°45' -114°44'30" -114°44' -114°43'30" -114°43' -114°42'30" -114°42' -114°41'30" -114°41' -114°40'30" -114°40' -114°39'30" -114°39' -114°38'30" -114°38' -114°37'30" -114°37' -114°36'30" -114°36' -114°35'30" -114°35' -114°34'30"

### Public Information

Weasel  
MTKNF-000123  
5044 acres  
8/27/2022

Fire perimeter updated from  
Acres from IR on 08/25/22 2249

- Wildfire Perimeter
- International Boundary
- Gravel Road
- Dirt Road
- Unimproved Road
- Forest Service Land
- USFS Roadless Areas



1 inch equals 9 miles

Scale: 1:45,000

NIR Remote Incident Support  
8/27/2022 0547  
North American 1983  
Datum: LatLong Grid

Public Information