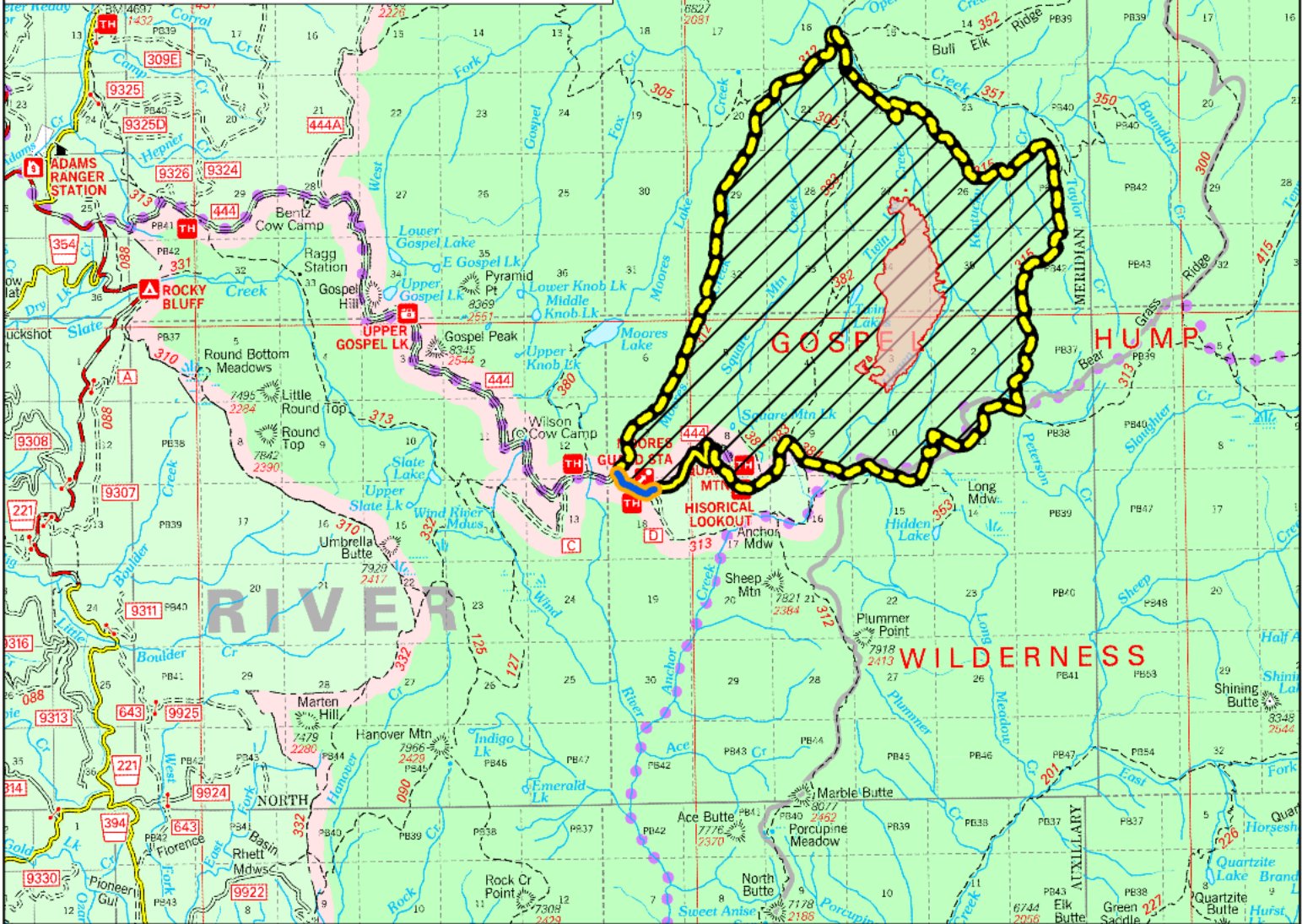




## Twin Lakes Fire - Area Closure

Roads and Trails along Area Closure Boundary that are **open** to public use.  
**NFSR 444** - Gospel Road: Open from junction with NFSR 221 to Moore's Guard Station/Campground

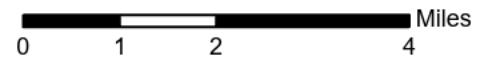
Roads and Trails along Area Closure Boundary that are **closed** to public use.  
**NFST 312** - North Moore's Trail: Closed from trailhead to MP 6.83/junction with NFST 383 - Square Mountain.  
**NFST 383** - Square Mountain Trail: Closed from MP 6.64/junction with NFST 315 to MP 7.16/junction with NFST 312.  
**NFST 315** - Kentucky Creek Trail: Closed from trailhead/junction with NFST 313 to MP 7.71/junction with NFST 383.  
**NFST 313** - Hump Trail: Closed from MP 15.4/junction with NFST 384 to MP 18.1/junction with NFST 315.  
**NFST 384** - Square Mountain Spur Trail: Closed from trailhead/junction with NFST 383 to MP 1.37/junction with NFST 313.  
**NFST 383** - Square Mountain Trail: Closed from trailhead/junction with NFSR 444 to MP 1.59/junction with NFST 384.  
**NFSR 444** - Gospel Road: Closed from MP 11.57 at Moore's Campground to end of road at Square Mountain Lookout.



Closure location within the Nez Perce-Clearwater National Forests

### Map Legend

- Closure Area
- Road: open route along area closure
- Road: closed route along area closure
- Trail: closed route along area closure
- TwinLakes\_20220907



Spatial Reference  
 Name: NAD 1983 UTM Zone 11N  
 GCS: GCS North American 1983  
 Datum: North American 1983  
 Projection: Transverse Mercator  
 False Easting: 500,000.0000  
 False Northing: 0.0000  
 Map Units: Meter

Map Created: 9/7/2022 9:38 AM

Map Author: joelharrison