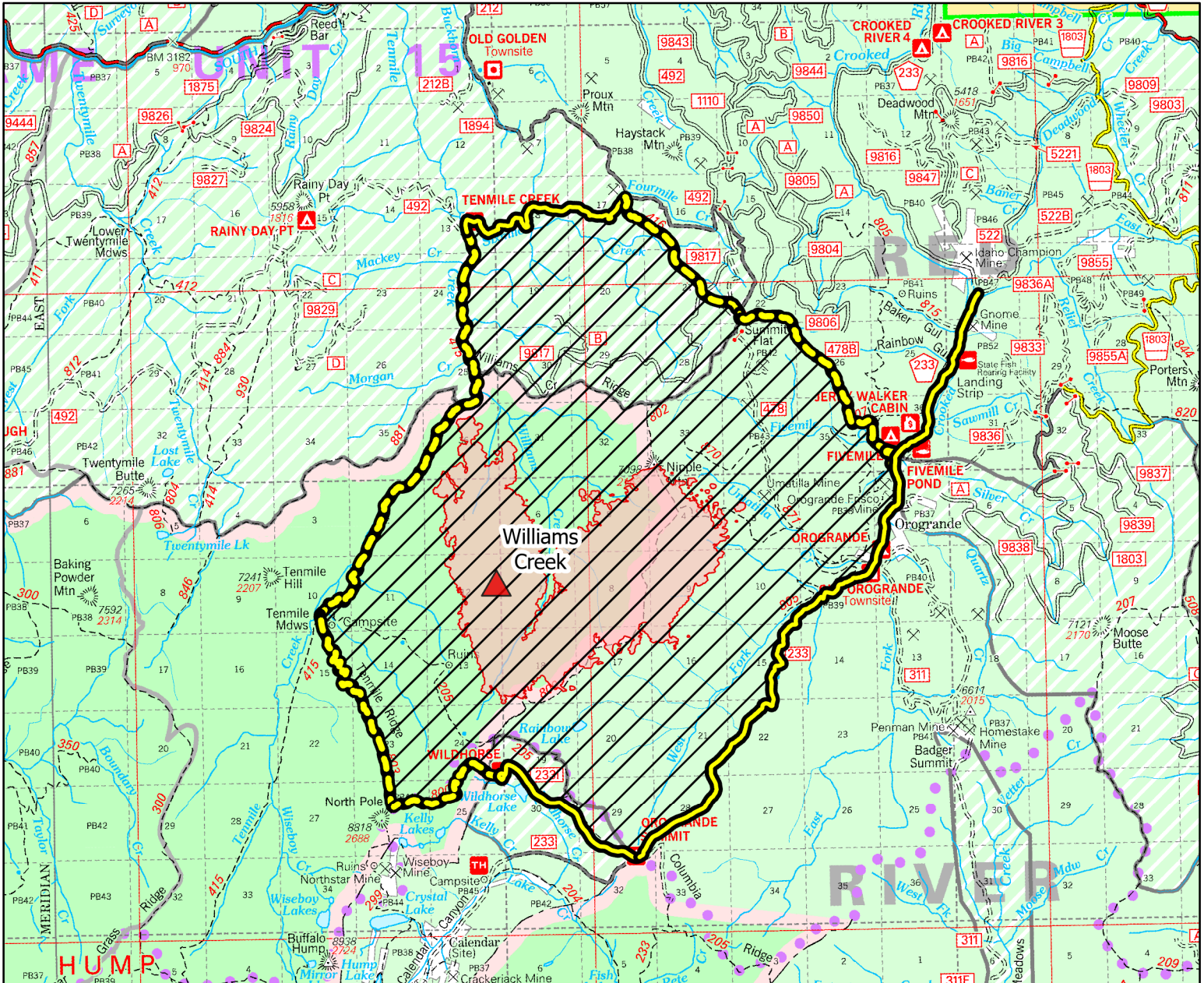


# Williams Creek Fire Closure

Order Number 01-17-05-22-002



## Williams Creek Fire - Area Closure

Roads and Trails along Area Closure Boundary that are **closed** to public use.

**NFSR 233** - Crooked River Road: Closed from junction with Forest Road 522 to junction with Forest Road 2331 at Orogrande Summit.

**NFSR 492** - Santiam Sourdough Road: Closed from junction with Trail 415 to junction with Trail 416.

**NFSR 2331** Wild Horse Campground Road: Closed from junction with Forest Road 233 to end of road.

**NFST 299** Crystal Lake Trail: Closed from trailhead/junction with Forest Road 2331 to junction with Trail 803 at MP 2.04.

**NFST 803** Ten Mile Spur: Closed from trailhead/junction with Trail 299 to end of trail/junction with Trail 415.

**NFST 415** Ten Mile Trail: Closed from trailhead/junction with Trail 803 at MP 6.49 to trailhead/junction with Forest Road 492.

**NFST 416** Old Golden-North Hill Trail: Closed from trailhead/junction with Forest Road 492 to end of trail/junction with Forest Road 478A.

**NFSR 478A** Forest Road 478A: Closed from junction with Trail 416 at 0.2 to junction with Forest Road 478.

**NFSR 478** Nipple Mountain Road: Closed from junction with Forest Road 478A at MP 1.56 to junction with Trail 807 at MP 1.65.

**NFST 807** Five Mile Trail: Closed from end of trail/junction with Forest Road 478 to trailhead/junction with Forest Road 2003.

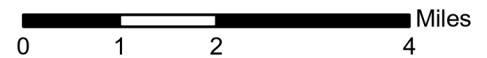
**NFSR 2003** Five Mile Camp Road: Closed from junction with Trail 807 at MP 0.15 to beginning of road/junction with Forest Road 233.



Closure location within the Nez Perce-Clearwater National Forests

### Map Legend

- Closure Area
- Active Fire Incident
- Road: closed route along area closure
- Trail: closed route along area closure



Map Created: 9/5/2022 8:23 AM

Map Author: samamartin

Spatial Reference  
 Name: NAD 1983 UTM Zone 11N  
 GCS: GCS North American 1983  
 Datum: North American 1983  
 Projection: Transverse Mercator  
 False Easting: 500,000.0000  
 False Northing: 0.0000  
 Map Units: Meter