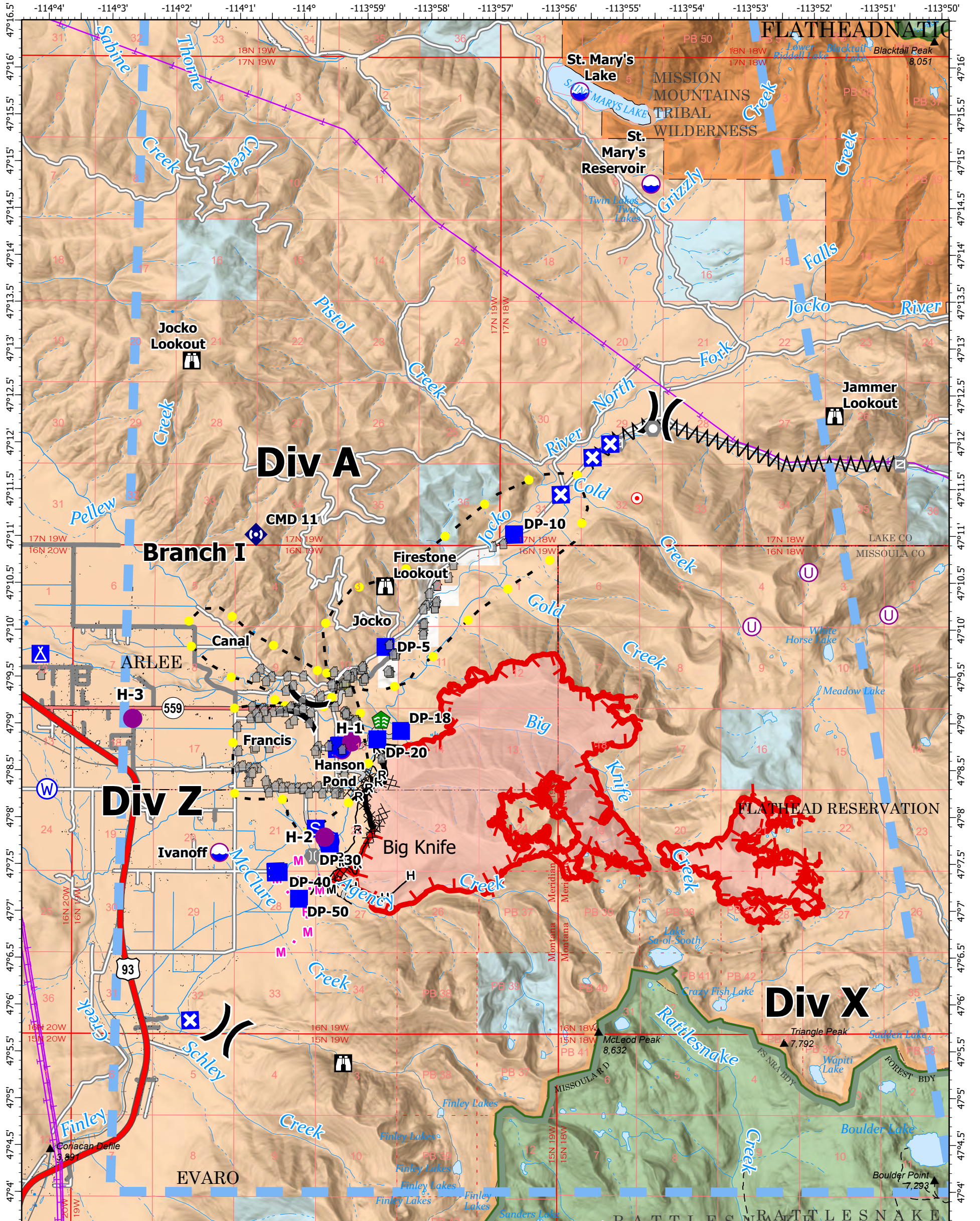


AIR OPERATIONS - BIG KNIFE

8/7/2023



IncidentName	FeatureCategory	Label	Comments	Latitude	Longitude
Big Knife	Dip Site	Ivanoff	2 miles south and west of fire 3500 elevation (Type 2 Helicopters)	47° 07.622' N	114° 01.305' W
Big Knife	Dip Site	St. Mary's Lake	7 miles north of fire. 4000' elevation (Type 1 Helicopters)	47° 15.747' N	113° 55.678' W
Big Knife	Dip Site	Hanson Pond	1 mile west of bottom of fire. 3500' elevation (Type 3 Helicopters/Type 2)	47° 08.719' N	113° 59.396' W
Big Knife	Dip Site	St. Mary's Reservoir		47° 14.760' N	113° 54.561' W
Big Knife	Helispot	2	Div z near toe of slope	47° 07.787' N	113° 59.659' W
Big Knife	Helispot	3	By Jim Steeles	47° 09.050' N	114° 02.667' W
Big Knife	Helispot	1	Proposed	47° 08.805' N	113° 59.242' W
Big Knife	Repeater	CMD 11		47° 11.016' N	114° 00.743' W
Big Knife	Unimproved Landing Area		Crooks Helispot	47° 10.615' N	113° 52.088' W
Big Knife	Unimproved Landing Area			47° 10.161' N	113° 50.835' W
Big Knife	Unimproved Landing Area			47° 10.037' N	113° 52.978' W

Big Knife
MT-FHA-000094
 Fire Perimeter as of
 08/05/2023 1755 hrs
 4,864 Acres

Dip Site	Closure	Landmark	Water Source	Completed Road as Line	Access or Improved Road
Helispot	Camp	Gate	Completed Dozer Line	Planned Fuel Break	Highlighted Feature
Unimproved Landing Area	Staging Area	Bridge	Completed Fuel Break	Planned Hand Line	Escape Route
Division Break	Lookout	Stream Crossing	Completed Hand Line	Planned Mixed Construction Line	Temporary Flight Restriction
Drop Point	Hot Spot - Spot Fire	Repeater	Completed Mixed Construction Line	Planned Road as Line	Wildfire Daily Fire Perimeter

Miles 0 0.5 1