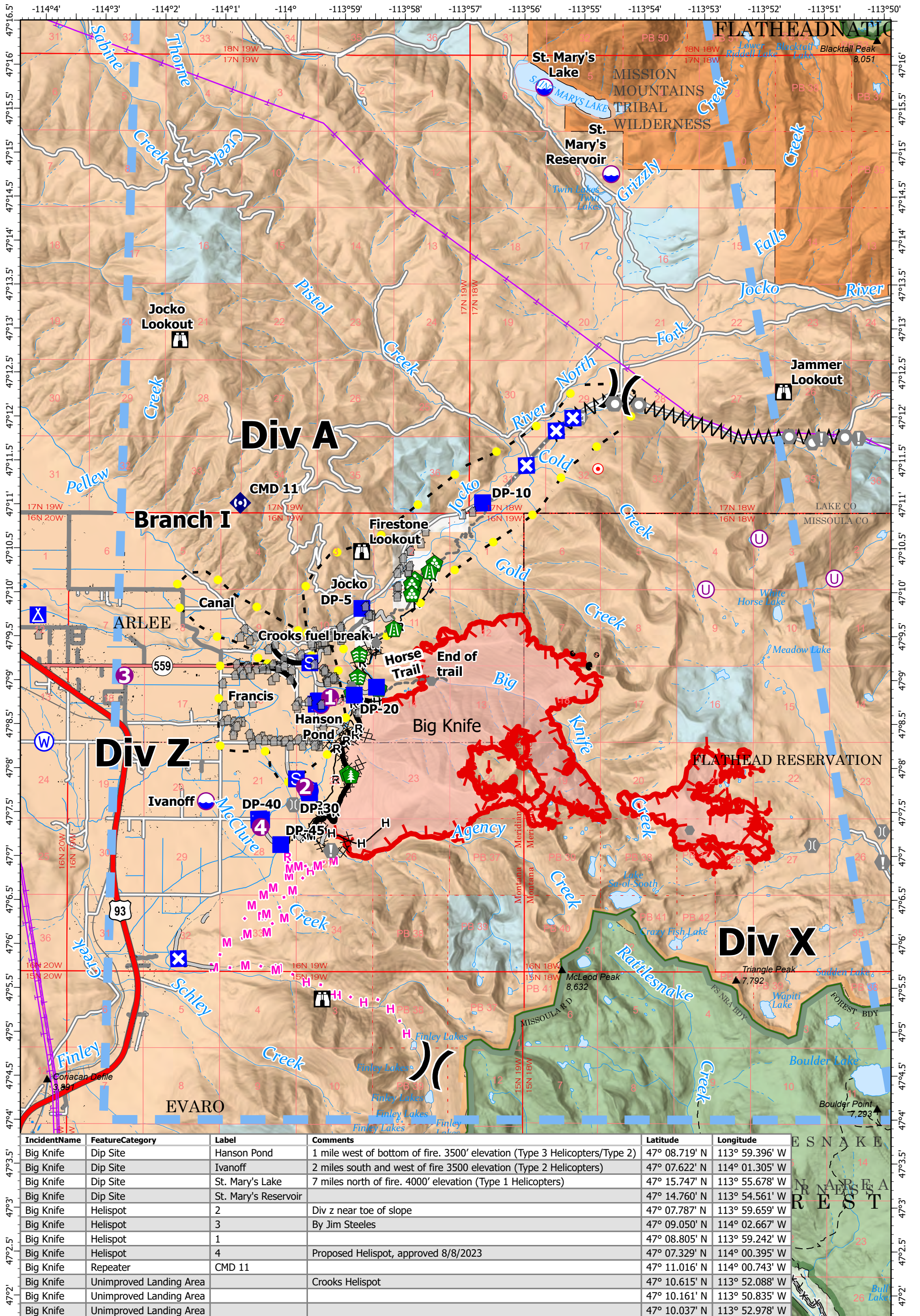


AIR OPERATIONS - BIG KNIFE

8/9/2023



IncidentName	FeatureCategory	Label	Comments	Latitude	Longitude
Big Knife	Dip Site	Hanson Pond	1 mile west of bottom of fire. 3500' elevation (Type 3 Helicopters/Type 2)	47° 08.719' N	113° 59.396' W
Big Knife	Dip Site	Ivanoff	2 miles south and west of fire 3500 elevation (Type 2 Helicopters)	47° 07.622' N	114° 01.305' W
Big Knife	Dip Site	St. Mary's Lake	7 miles north of fire. 4000' elevation (Type 1 Helicopters)	47° 15.747' N	113° 55.678' W
Big Knife	Dip Site	St. Mary's Reservoir		47° 14.760' N	113° 54.561' W
Big Knife	Helispot	2	Div z near toe of slope	47° 07.787' N	113° 59.659' W
Big Knife	Helispot	3	By Jim Steeles	47° 09.050' N	114° 02.667' W
Big Knife	Helispot	1		47° 08.805' N	113° 59.242' W
Big Knife	Helispot	4	Proposed Helispot, approved 8/8/2023	47° 07.329' N	114° 00.395' W
Big Knife	Repeater	CMD 11		47° 11.016' N	114° 00.743' W
Big Knife	Unimproved Landing Area		Crooks Helispot	47° 10.615' N	113° 52.088' W
Big Knife	Unimproved Landing Area			47° 10.161' N	113° 50.835' W
Big Knife	Unimproved Landing Area			47° 10.037' N	113° 52.978' W

Big Knife
MT-FHA-000094
 Fire Perimeter as of
 08/05/2023 1755 hrs
 4,864 Acres

- Dip Site
- Camp
- Value at Risk
- Structure Wrap
- Dozer Push
- Completed Hand Line
- Planned Road as Line
- Temporary Flight Restriction
- Helispot
- Other
- Stream Crossing
- Repeater
- Completed Mixed Construction Line
- Access or Improved Road
- Wildfire Daily Fire Perimeter
- Unimproved Landing Area
- Staging Area
- Landmark
- Road Repair
- Water Source
- Highlighted Feature
- Division Break
- Lookout
- Gate
- Completed Dozer Line
- Planned Hand Line
- Other
- Drop Point
- Hot Spot - Spot Fire
- Bridge
- Hazard Tree
- Completed Fuel Break
- Planned Mixed Construction Line
- Escape Route

Miles
0 0.5 1