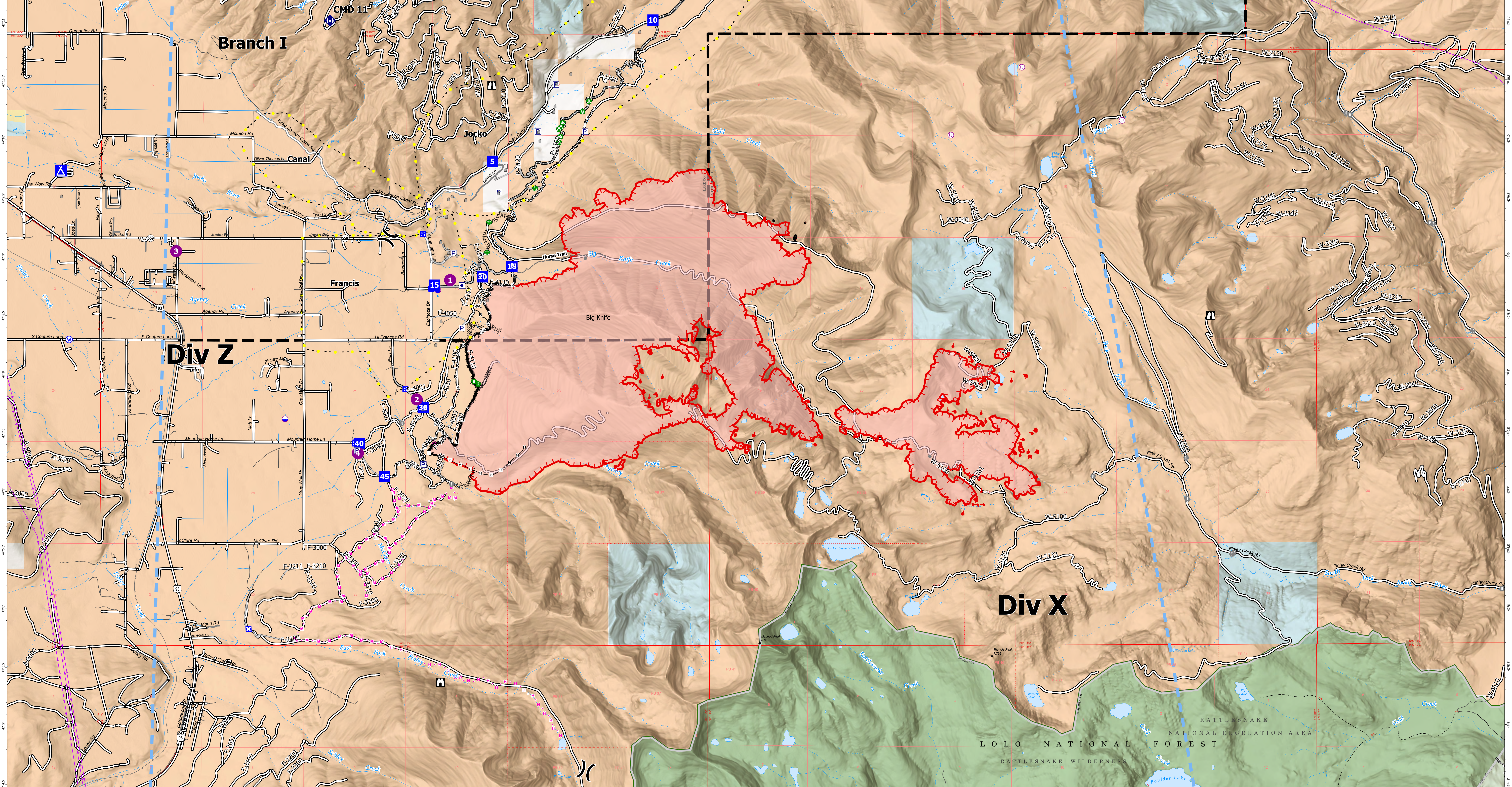


COMMUNICATIONS MAP - BIG KNIFE

FC Point Type	Label	Latitude WGS84 DDM	Longitude WGS84 DDM
Camp		47° 09.738' N	114° 04.112' W
Drop Point	DP-10	47° 11.022' N	113° 56.703' W
Drop Point	DP-15	47° 08.762' N	113° 59.438' W
Drop Point	DP-18	47° 08.922' N	113° 58.468' W
Drop Point	DP-20	47° 08.832' N	113° 58.838' W
Drop Point	DP-30	47° 07.720' N	113° 59.579' W
Drop Point	DP-40	47° 07.413' N	114° 00.378' W
Drop Point	DP-45	47° 07.130' N	114° 00.060' W
Drop Point	DP-5	47° 09.818' N	113° 58.713' W
Helispot	1	47° 08.805' N	113° 59.242' W
Helispot	2	47° 07.787' N	113° 59.659' W
Helispot	3	47° 09.050' N	114° 02.667' W
Helispot	4	47° 07.329' N	114° 00.395' W
Repeater	CMD 11	47° 11.016' N	114° 00.743' W



Big Knife
MT-FHA-00094
 Fire Perimeter as of
 08/05/2023 1755 hrs
 4,864 Acres

- Dip Site
- Helispot
- Unimproved Landing Area
- X Division Break
- Drop Point
- Closure
- Camp
- Staging Area
- Lookout
- Hot Spot - Spot Fire
- Value at Risk
- Other
- Landmark
- Gate
- Bridge
- Structure Wrap
- Stream Crossing
- Road Repair
- Landing or Log Deck
- Hazard Tree
- Dozer Push
- ◆ Repeater
- Water Source
- ※※ Completed Dozer Line
- M Completed Fuel Break
- Completed Hand Line
- M Completed Mixed Construction Line
- Completed Road as Line
- * Planned Dozer Line
- H Planned Hand Line
- M Planned Mixed Construction Line
- P Planned Road as Line
- Access or Improved Road
- Highlighted Feature
- Other
- Escape Route
- Temporary Flight Restriction
- Wildfire Daily Fire Perimeter
- Structure
- Contained
- Uncontained
- Transmission Lines
- Primary Highway
- Secondary Highway
- Secondary Paved
- Secondary Dirt
- Trail
- Forest Service Roads Closed
- Railroad
- Tribal Wilderness Boundary
- County Boundary
- Township
- Protracted Section
- Section
- USFS Roadless Areas
- USFS Wilderness
- Tribal Wilderness Area
- American Indian Lands
- Forest Service Land
- American Indian Lands
- Bureau of Land Management Lands
- State Lands

