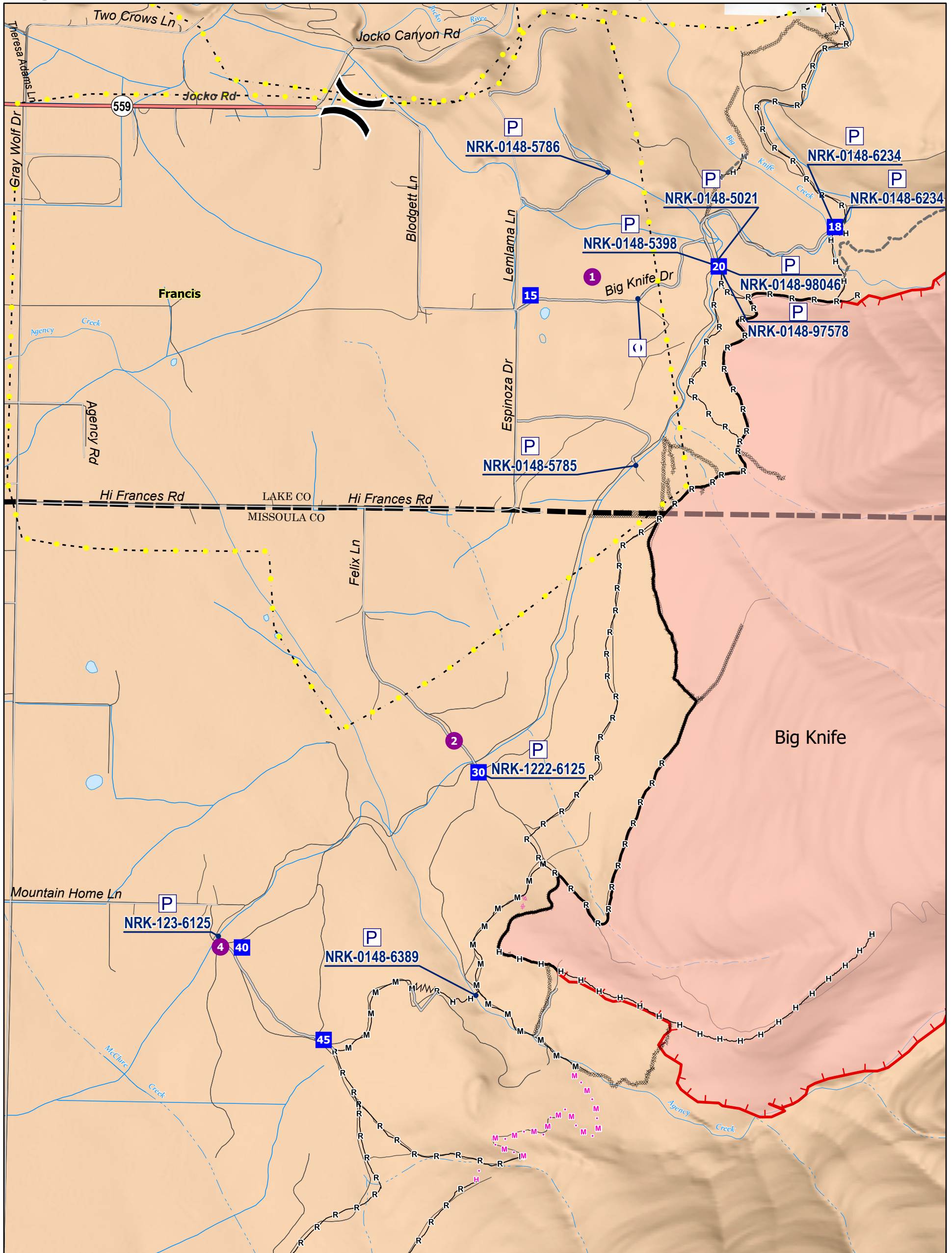


Big Knife Division Z - Accountable Property Map

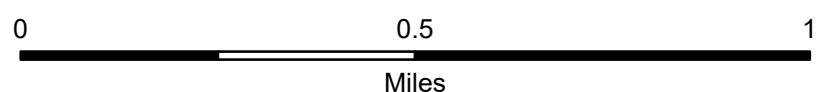
8/11/2023



Big Knife MT-FHA-000094

Fire Perimeter as of
08/09/2023 1345 hrs
4,952 Acres

- | | | |
|--|---|---|
| <ul style="list-style-type: none"> ■ Other Property P Pump ● Helispot Division Break 40 Drop Point Completed Dozer Line | <ul style="list-style-type: none"> MMM Completed Fuel Break H— Completed Hand Line M— Completed Mixed Construction Line R— Completed Road as Line xx Planned Dozer Line H • Planned Hand Line | <ul style="list-style-type: none"> M • Planned Mixed Construction Line — Access or Improved Road ••• Highlighted Feature --- Other ▭ Wildfire Daily Fire Perimeter |
|--|---|---|



Big Knife Division Z - Accountable Property List

8/11/2023

Feature Category (Point Type)	Trackable ID	Comments	Latitude WGS84 DDM	Longitude WGS84 DDM
Other Property		3-portable toilets and 1-hand wash station.	47° 08.759' N	113° 59.095' W
Pump	NRK-0148-5021	Mark3	47° 08.840' N	113° 58.848' W
Pump	NRK-0148-5398	Mark3 Staged at DP20, TFL Kabrehl will put them in his truck at end of shift.	47° 08.832' N	113° 58.838' W
Pump	NRK-0148-5785	Mark3 at 73778 Espinoza Dr	47° 08.395' N	113° 59.092' W
Pump	NRK-0148-5786	Mark3 at 73256 Lemlama Ln	47° 09.034' N	113° 59.197' W
Pump	NRK-0148-6234	WX10 Honda 4stroke mini pump	47° 08.922' N	113° 58.468' W
Pump	NRK-0148-6234	Mark3, Brand new pump	47° 08.923' N	113° 58.450' W
Pump	NRK-0148-6389	Mark3	47° 07.233' N	113° 59.576' W
Pump	NRK-0148-97578	Mark3 Staged at DP20, TFL Kabrehl will put them in his truck at end of shift.	47° 08.832' N	113° 58.838' W
Pump	NRK-0148-98046	Mark3 Staged at DP20, TFL Kabrehl will put them in his truck at end of shift.	47° 08.832' N	113° 58.838' W
Pump	NRK-1222-6125	Staged at DP30, volume pump w/kit	47° 07.718' N	113° 59.573' W
Pump	NRK-123-6125	Volume pump with kit, no picture	47° 07.352' N	114° 00.402' W