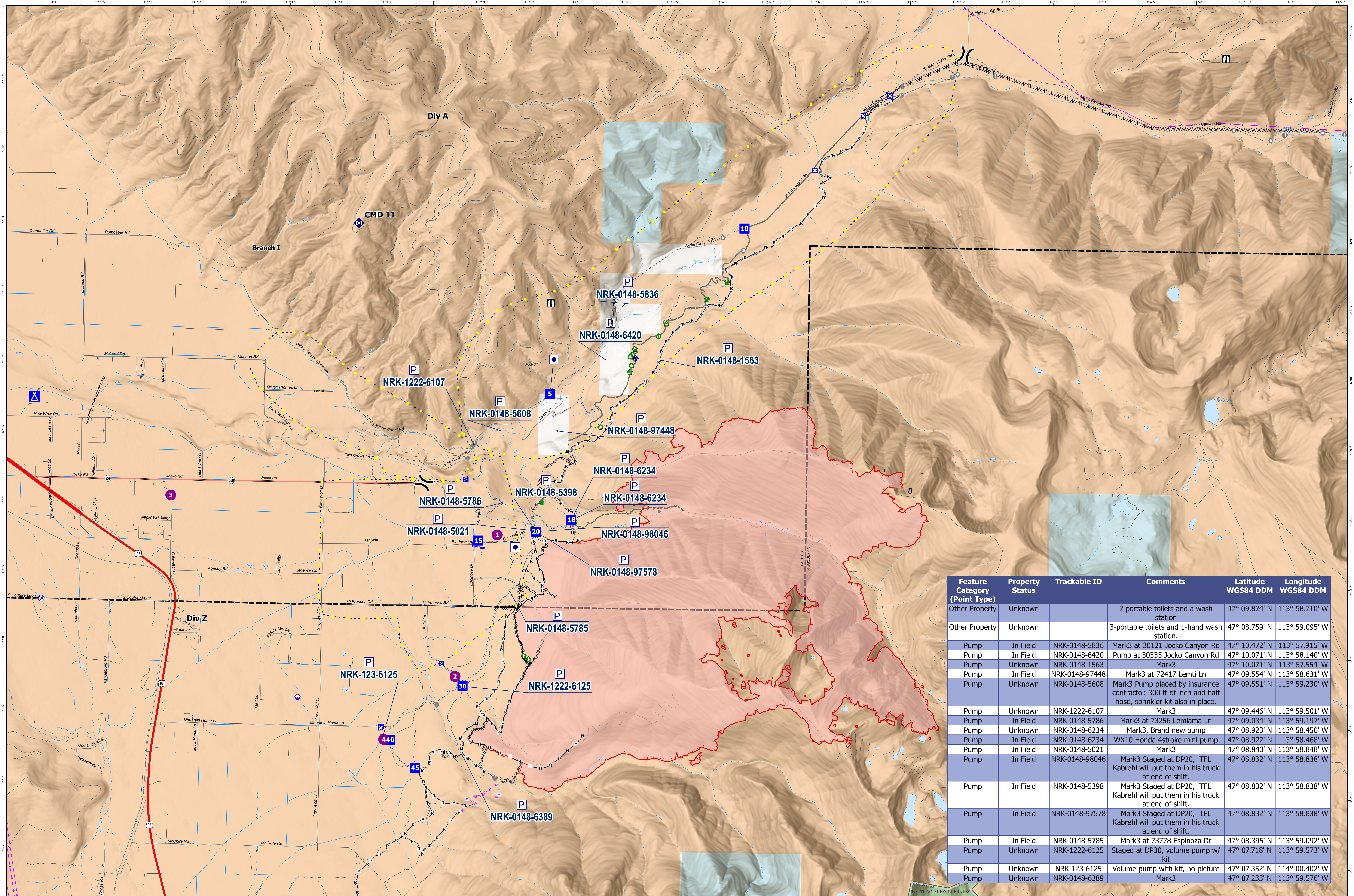


# Big Knife Accountable Property Map

8/11/2023



Feature Category (Point Type)	Property Status	Trackable ID	Comments	Latitude WGS84 DDM	Longitude WGS84 DDM
Other Property	Unknown		2 portable toilets and a wash station.	47° 09.824' N	113° 58.710' W
Other Property	Unknown		3-portable toilets and 1-hand wash station.	47° 08.759' N	113° 59.095' W
Pump	In Field	NRK-0148-5836	Mark3 at 30121 Jocko Canyon Rd	47° 10.472' N	113° 57.915' W
Pump	In Field	NRK-0148-6420	Pump at 30335 Jocko Canyon Rd	47° 10.071' N	113° 58.140' W
Pump	Unknown	NRK-0148-1563	Mark3	47° 10.071' N	113° 57.554' W
Pump	In Field	NRK-0148-97448	Mark3 at 72417 Lemti Ln	47° 09.554' N	113° 58.631' W
Pump	Unknown	NRK-0148-5608	Mark3 Pump placed by insurance contractor. 300 ft of inch and half hose, sprinkler kit also in place.	47° 09.551' N	113° 59.230' W
Pump	Unknown	NRK-1222-6107	Mark3	47° 09.446' N	113° 59.501' W
Pump	In Field	NRK-0148-5786	Mark3 at 73256 Lemlama Ln	47° 09.034' N	113° 59.197' W
Pump	Unknown	NRK-0148-6234	Mark3, Brand new pump	47° 08.923' N	113° 58.450' W
Pump	In Field	NRK-0148-6234	WX10 Honda 4stroke mini pump	47° 08.922' N	113° 58.468' W
Pump	In Field	NRK-0148-5021	Mark3	47° 08.840' N	113° 58.848' W
Pump	In Field	NRK-0148-98046	Mark3 Staged at DP20, TFL Kabrehl will put them in his truck at end of shift.	47° 08.832' N	113° 58.838' W
Pump	In Field	NRK-0148-5398	Mark3 Staged at DP20, TFL Kabrehl will put them in his truck at end of shift.	47° 08.832' N	113° 58.838' W
Pump	In Field	NRK-0148-97578	Mark3 Staged at DP20, TFL Kabrehl will put them in his truck at end of shift.	47° 08.832' N	113° 58.838' W
Pump	In Field	NRK-0148-5785	Mark3 at 73778 Espinoza Dr	47° 08.395' N	113° 59.092' W
Pump	Unknown	NRK-1222-6125	Staged at DP30, volume pump w/ kit	47° 07.718' N	113° 59.573' W
Pump	Unknown	NRK-123-6125	Volume pump with kit, no picture	47° 07.352' N	114° 00.402' W
Pump	Unknown	NRK-0148-6389	Mark3	47° 07.233' N	113° 59.576' W

## Big Knife MT-FHA-00094

Fire Perimeter as of 08/09/2023 1345 hrs  
4,952 Acres

- Other Property
- Helispot
- Drop Point
- Completed Fuel Break
- Planned Dozer Line
- Highlighted Feature
- Pump
- Division Break
- Camp
- Completed Hand Line
- Planned Hand Line
- Other
- Water Tank
- Completed Mixed Construction Line
- Planned Mixed Construction Line
- Escape Route
- Completed Dozer Line
- Access or Improved Road
- Completed Road as Line
- Wildfire Daily Fire Perimeter

