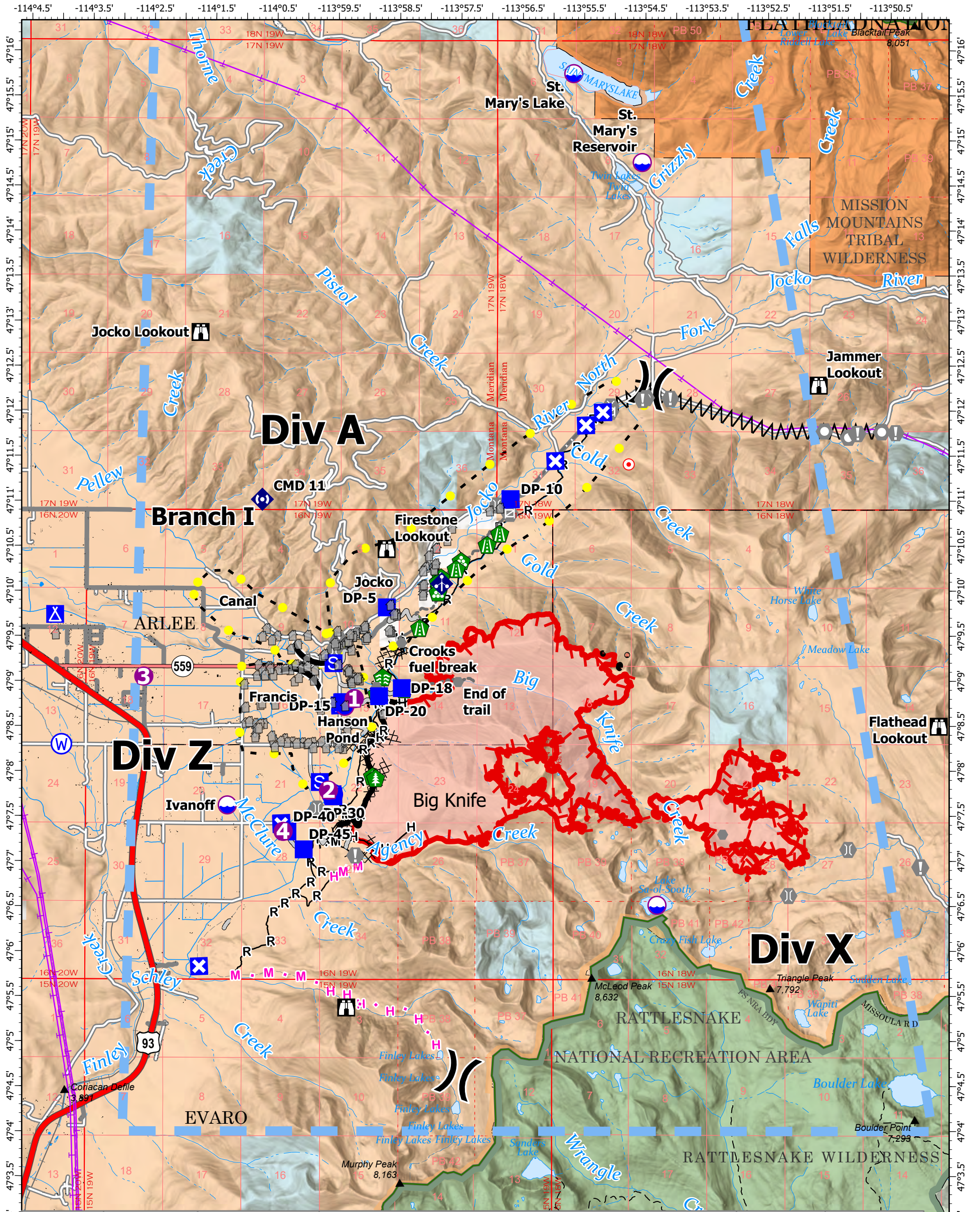


# AIR OPERATIONS - BIG KNIFE

8/11/2023



IncidentName	FeatureCategory	Label	Comments	Latitude	Longitude
Big Knife	Dip Site	Hanson Pond	1 mile west of bottom of fire. 3500' elevation (Type 3 Helicopters/Type 2)	47° 08.719' N	113° 59.396' W
Big Knife	Dip Site	Ivanoff	2 miles south and west of fire 3500 elevation (Type 2 Helicopters)	47° 07.622' N	114° 01.305' W
Big Knife	Dip Site	St. Mary's Lake	7 miles north of fire. 4000' elevation (Type 1 Helicopters)	47° 15.747' N	113° 55.678' W
Big Knife	Dip Site	St. Mary's Reservoir		47° 14.760' N	113° 54.561' W
Big Knife	Dip Site		Clean bucket or tank prior to use	47° 06.513' N	113° 54.314' W
Big Knife	Helispot	2	Div z near toe of slope	47° 07.787' N	113° 59.659' W
Big Knife	Helispot	3	By Jim Steeles	47° 09.050' N	114° 02.667' W
Big Knife	Helispot	1		47° 08.805' N	113° 59.242' W
Big Knife	Helispot	4	Proposed Helispot, approved 8/8/2023	47° 07.329' N	114° 00.395' W
Big Knife	Repeater	CMD 11		47° 11.016' N	114° 00.743' W

## Big Knife MT-FHA-000094

Fire Perimeter as of  
08/09/2023 1345 hrs  
4,952 Acres

<ul style="list-style-type: none"> <li>■ Contained</li> <li>■ Uncontained</li> <li>■ Wildfire Daily Fire Perimeter</li> <li>● Dip Site</li> <li>● Helispot</li> <li>● Division Break</li> <li>● Drop Point</li> </ul>	<ul style="list-style-type: none"> <li>■ Closure</li> <li>■ Camp</li> <li>■ Staging Area</li> <li>■ Lookout</li> <li>■ Gate</li> <li>■ Bridge</li> <li>■ Structure Wrap</li> <li>■ Stream Crossing</li> <li>■ Road Repair</li> <li>■ Landing or Log Deck</li> </ul>	<ul style="list-style-type: none"> <li>○ Landmark</li> <li>○ Dozer Push</li> <li>○ Completed Hand Line</li> <li>○ Completed Mixed Construction Line</li> <li>○ Completed Road as Line</li> <li>○ Planned Hand Line</li> <li>○ Planned Mixed Construction Line</li> <li>○ Completed Dozer Line</li> <li>○ Access or Improved Road</li> <li>○ Completed Fuel Break</li> <li>○ Highlighted Feature</li> </ul>	<ul style="list-style-type: none"> <li>○ Other</li> <li>○ Escape Route</li> <li>○ Temporary Flight Restriction</li> <li>○ USFS Roadless Areas</li> <li>○ USFS Wilderness</li> <li>○ Tribal Wilderness Area</li> <li>○ Forest Service Land</li> </ul>	<ul style="list-style-type: none"> <li>■ American Indian Lands</li> <li>■ Bureau of Land Management Lands</li> <li>■ State Lands</li> </ul>
---	---	--	--	---

