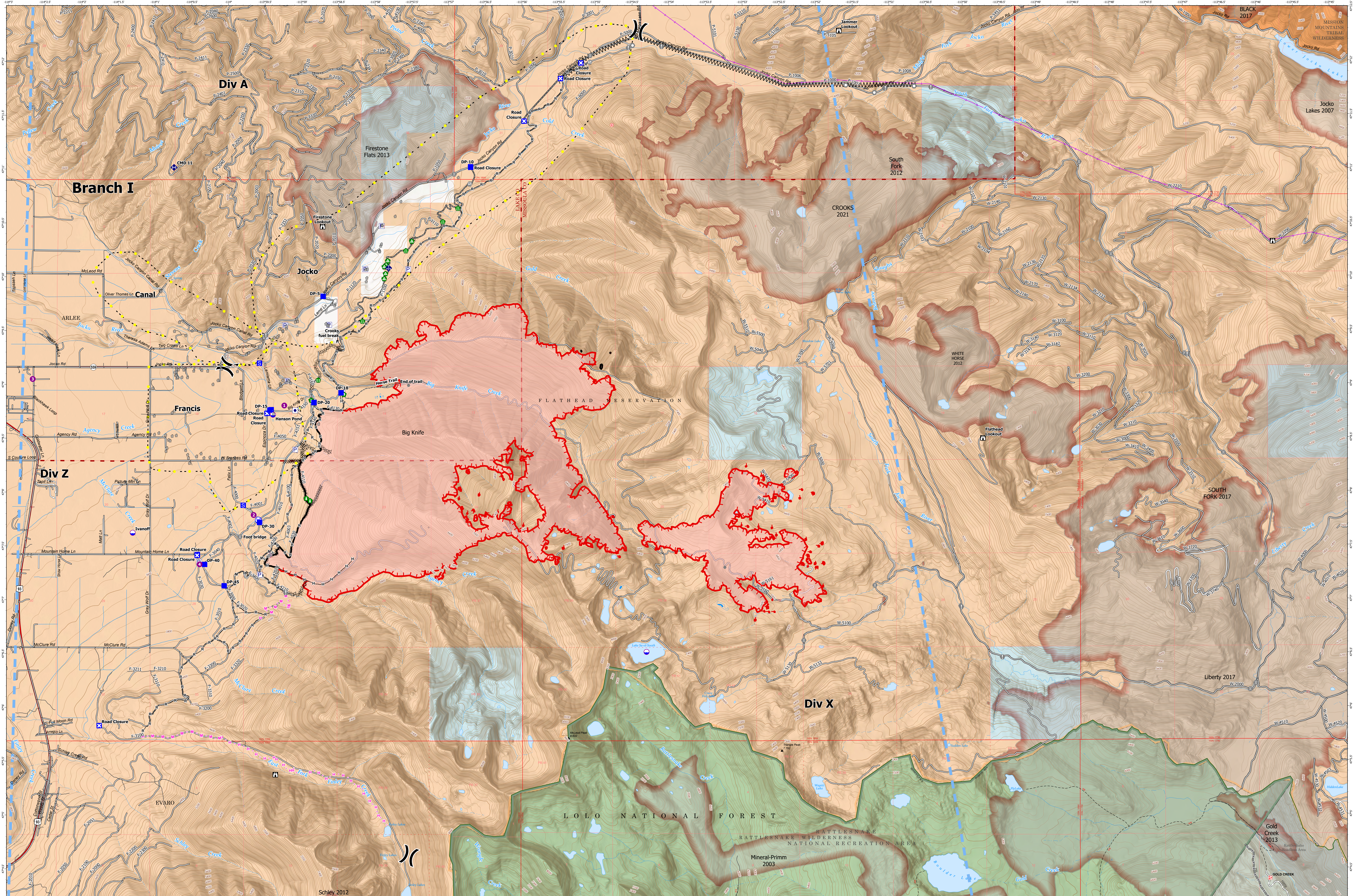


# OPERATIONS MAP - BIG KNIFE

8/11/2023



**Big Knife**  
**MT-FHA-00094**  
 Fire Perimeter as of  
 08/09/2023 1345 hrs  
 4,952 Acres

|                                 |                        |                   |                       |                                     |                                   |                                |                     |                               |                       |                          |
|---------------------------------|------------------------|-------------------|-----------------------|-------------------------------------|-----------------------------------|--------------------------------|---------------------|-------------------------------|-----------------------|--------------------------|
| — Contained                     | ■ Drop Point           | ● Other           | ● Road Repair         | ● Water Source                      | — Planned Dozer Line              | — Escape Route                 | — Secondary Highway | — Unimproved Road             | — County Boundary     | — Tribal Wilderness Area |
| — Uncontained                   | ■ Closure              | ○ Landmark        | ● Landing or Log Deck | ● Completed Dozer Line              | — Planned Hand Line               | — Temporary Flight Restriction | — Secondary Paved   | — Forest Service Roads Closed | — Township            | — American Indian Lands  |
| — Wildfire Daily Fire Perimeter | ■ Staging Area         | ○ Gate            | ● Hazard Tree         | — Completed Fuel Break              | — Planned Mixed Construction Line | — Structure                    | — Secondary Dirt    | — Railroad                    | — Protracted Section  | — Forest Service Land    |
| ○ Dip Site                      | ■ Lookout              | ○ Bridge          | ● Dozer Push          | — Completed Hand Line               | — Access or Improved Road         | — Trailhead                    | — Trail             | — FS Wilderness Boundary      | — Section             | — American Indian Lands  |
| ● Helispot                      | ○ Hot Spot - Spot Fire | ● Structure Wrap  | ● Mobile Weather Unit | — Completed Mixed Construction Line | — Highlighted Feature             | — Transmission Lines           | — Paved             | — Indian Reservation          | — Fire History        | — State Lands            |
| × Division Break                | ● Value at Risk        | ● Stream Crossing | ● Repeater            | — Completed Road as Line            | — Other                           | — Primary Highway              | — Dirt Road         | — Tribal Wilderness Boundary  | — USFS Roadless Areas |                          |

