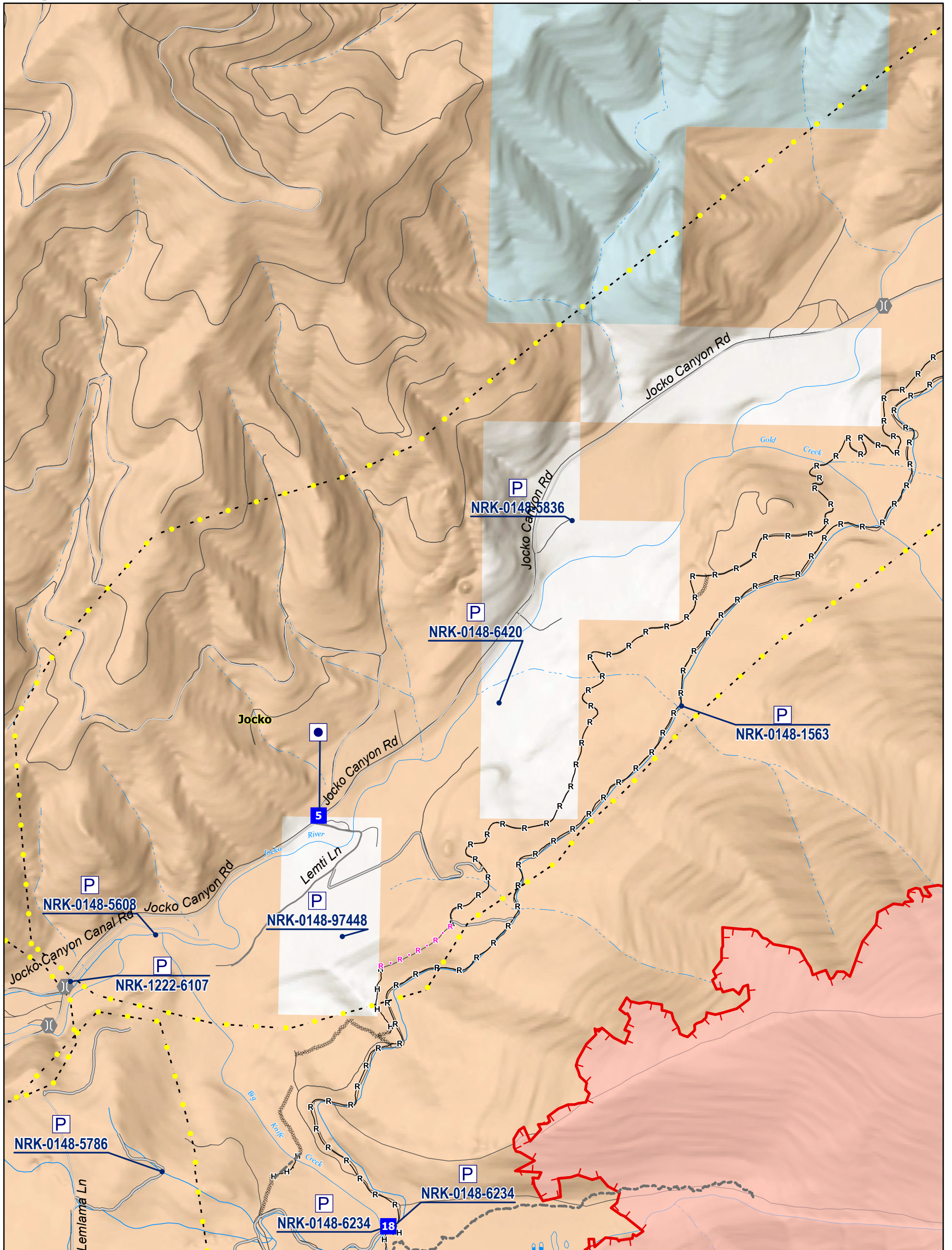


Big Knife Division A - Accountable Property Map

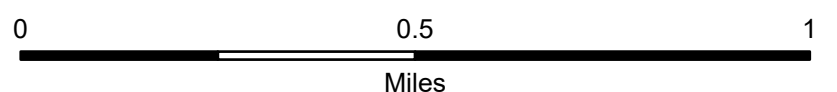
8/12/2023



Big Knife MT-FHA-000094

Fire Perimeter as of
08/11/2023 2209 hrs
4,952 Acres

- | | | |
|----------------------|-------------------------|-------------------------------|
| Other Property | Completed Hand Line | Highlighted Feature |
| Pump | Completed Road as Line | Other |
| Drop Point | Planned Road as Line | Escape Route |
| Bridge | Access or Improved Road | Wildfire Daily Fire Perimeter |
| Completed Dozer Line | | |



Big Knife Division A- Accountable Property List

8/12/2023

| Feature Category (Point Type) | Trackable ID | Comments | Latitude WGS84 DDM | Longitude WGS84 DDM |
|-------------------------------|----------------|---|--------------------|---------------------|
| Other Property | | 2 portable toilets and a wash station | 47° 09.824' N | 113° 58.710' W |
| Pump | NRK-0148-1563 | Mark3 | 47° 10.071' N | 113° 57.554' W |
| Pump | NRK-0148-5608 | Mark3 Pump placed by insurance contractor. 300 ft of inch and half hose, sprinkler kit also in place. | 47° 09.551' N | 113° 59.230' W |
| Pump | NRK-0148-5786 | Mark3 at 73256 Lemlama Ln | 47° 09.034' N | 113° 59.197' W |
| Pump | NRK-0148-5836 | Mark3 at 30121 Jocko Canyon Rd | 47° 10.472' N | 113° 57.915' W |
| Pump | NRK-0148-6234 | WX10 Honda 4stroke mini pump | 47° 08.922' N | 113° 58.468' W |
| Pump | NRK-0148-6234 | Mark3, Brand new pump | 47° 08.923' N | 113° 58.450' W |
| Pump | NRK-0148-6420 | Pump at 30335 Jocko Canyon Rd | 47° 10.071' N | 113° 58.140' W |
| Pump | NRK-0148-97448 | Mark3 at 72417 Lemti Ln | 47° 09.554' N | 113° 58.631' W |
| Pump | NRK-1222-6107 | Mark3 | 47° 09.446' N | 113° 59.501' W |