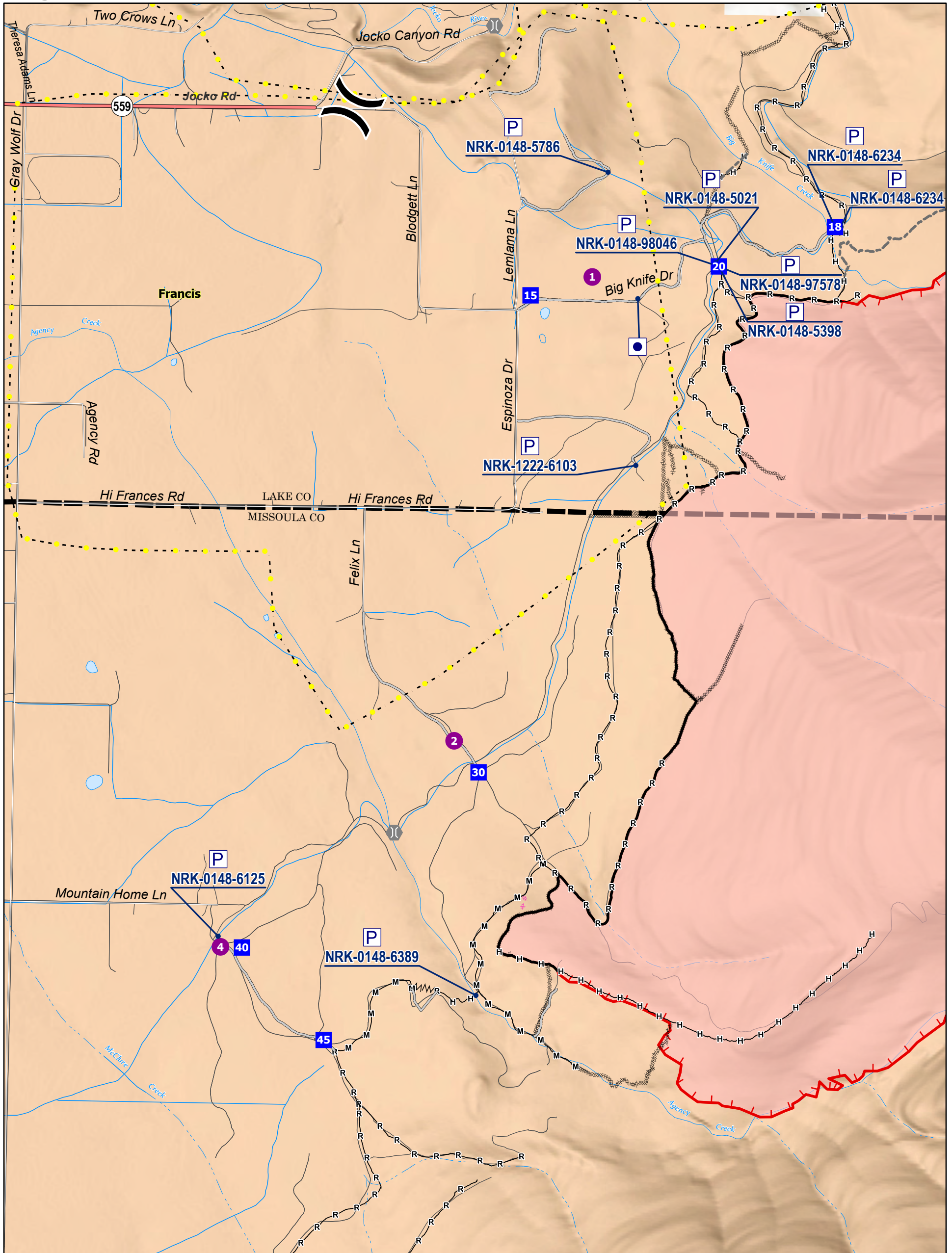


Big Knife Division Z - Accountable Property Map

8/12/2023



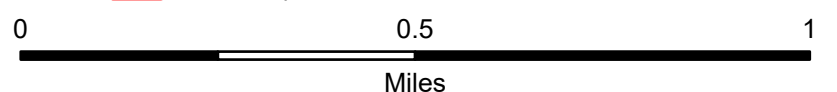
Big Knife MT-FHA-000094

Fire Perimeter as of
08/11/2023 2209 hrs
4,952 Acres

- Other Property
- P Pump
- Helispot
- Division Break
- Drop Point
- X Bridge

- Completed Dozer Line
- Completed Fuel Break
- Completed Hand Line
- Completed Mixed Construction Line
- Completed Road as Line

- Planned Dozer Line
- Access or Improved Road
- Highlighted Feature
- Other
- Wildfire Daily Fire Perimeter



Big Knife Division Z - Accountable Property List**8/12/2023**

Feature Category (Point Type)	Trackable ID	Comments	Latitude WGS84 DDM	Longitude WGS84 DDM
Other Property		3-portable toilets and 1-hand wash station.	47° 08.759' N	113° 59.095' W
Pump	NRK-0148-5021	Mark3	47° 08.840' N	113° 58.848' W
Pump	NRK-0148-5398	Mark3 Staged at DP20, TFL Kabrehl will put them in his truck at end of shift.	47° 08.832' N	113° 58.838' W
Pump	NRK-0148-5786	Mark3 at 73256 Lemlama Ln	47° 09.034' N	113° 59.197' W
Pump	NRK-0148-6125	Volume pump with kit Returned to supply 8/11/23 Dan Poole	47° 09.718' N	114° 04.162' W
Pump	NRK-0148-6234	WX10 Honda 4stroke mini pump	47° 08.922' N	113° 58.468' W
Pump	NRK-0148-6234	Mark3, Brand new pump	47° 08.923' N	113° 58.450' W
Pump	NRK-0148-6389	Mark3	47° 07.233' N	113° 59.576' W
Pump	NRK-0148-97578	Mark3 Staged at DP20, TFL Kabrehl will put them in his truck at end of shift.	47° 08.832' N	113° 58.838' W
Pump	NRK-0148-98046	Mark3 Staged at DP20, TFL Kabrehl will put them in his truck at end of shift.	47° 08.832' N	113° 58.838' W
Pump	NRK-1222-6103	Mark3 at 73778 Espinoza Dr, incorrectly marked as NRK-0148-5785	47° 08.395' N	113° 59.092' W