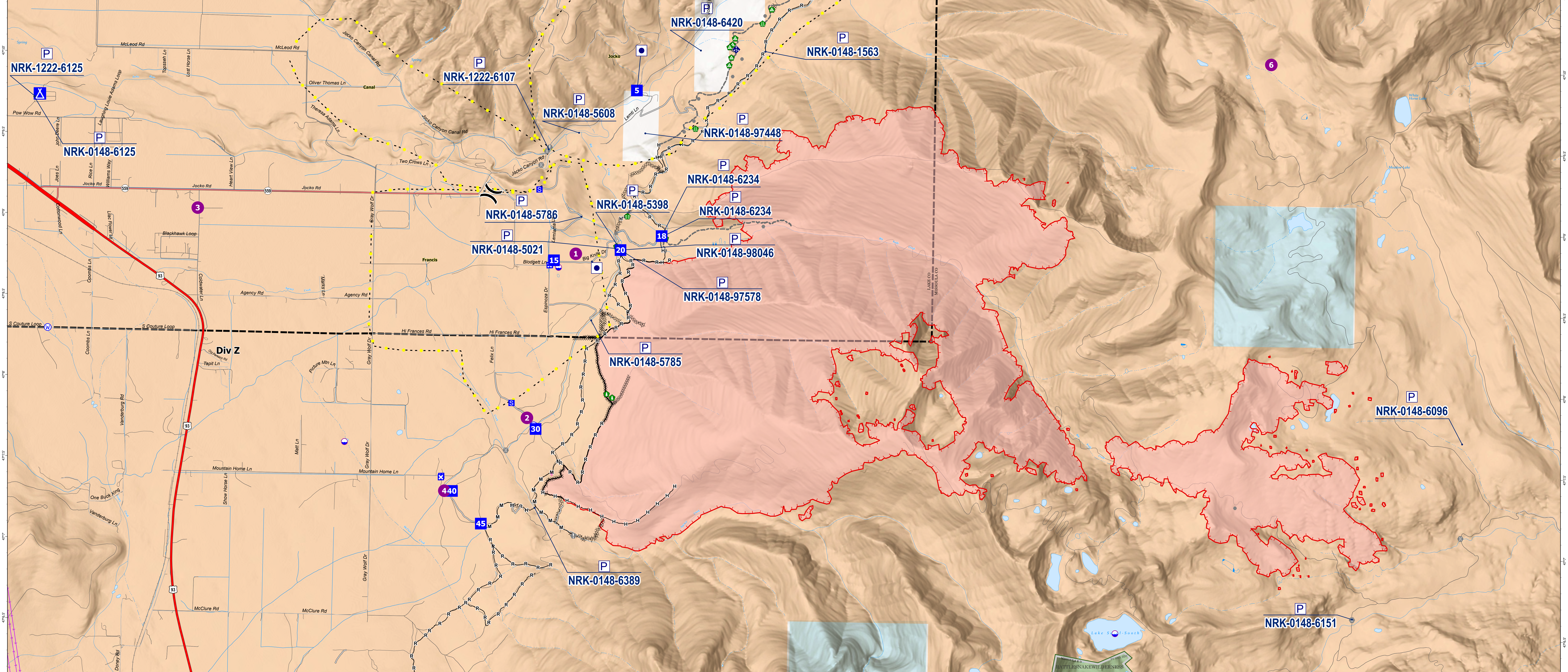


# Big Knife Accountable Property Map

8/12/2023

Feature Category (Point Type)	Property Status	Trackable ID	Comments	Latitude WGS84 DDM	Longitude WGS84 DDM
Other Property	Unknown		2 portable toilets and a wash station	47° 09.824' N	113° 58.710' W
Other Property	Unknown		3-portable toilets and 1-hand wash station.	47° 08.759' N	113° 59.095' W
Pump	In Field	NRK-0148-98046	3rd canal pump.	47° 11.282' N	113° 55.866' W
Pump	In Field	NRK-0148-5836	Mark3 at 30121 Jocko Canyon Rd	47° 10.472' N	113° 57.915' W
Pump	In Field	NRK-0148-6420	Pump at 30335 Jocko Canyon Rd	47° 10.071' N	113° 58.140' W
Pump	Unknown	NRK-0148-1563	Mark3	47° 10.071' N	113° 57.554' W
Pump	Unknown	NRK-1222-6125	Staged at DP30, volume pump w/ kit moved to DP40 and installed. Light use. Returned to Supply 8/11/2023 Dan Poole	47° 09.722' N	114° 04.158' W
Pump	Unknown	NRK-0148-6125	Volume pump with kit Returned to supply 8/11/23 Dan Poole	47° 09.718' N	114° 04.162' W
Pump	In Field	NRK-0148-97448	Mark3 at 72417 Lemti Ln	47° 09.554' N	113° 58.631' W
Pump	Unknown	NRK-0148-5608	Mark3 Pump placed by insurance contractor. 300 ft of inch and half hose, sprinkler kit also in place.	47° 09.551' N	113° 59.230' W
Pump	Unknown	NRK-1222-6107	Mark3	47° 09.446' N	113° 59.501' W
Pump	In Field	NRK-0148-5786	Mark3 at 73256 Lemlama Ln	47° 09.034' N	113° 59.197' W
Pump	Unknown	NRK-0148-6234	Mark3, Brand new pump	47° 08.923' N	113° 58.450' W
Pump	In Field	NRK-0148-6234	WX10 Honda 4stroke mini pump	47° 08.922' N	113° 58.468' W
Pump	In Field	NRK-0148-5021	Mark3	47° 08.840' N	113° 58.848' W
Pump	In Field	NRK-0148-98046	Mark3 Staged at DP20, TFL Kabrehl will put them in his truck at end of shift.	47° 08.832' N	113° 58.838' W
Pump	In Field	NRK-0148-5398	Mark3 Staged at DP20, TFL Kabrehl will put them in his truck at end of shift.	47° 08.832' N	113° 58.838' W
Pump	In Field	NRK-0148-97578	Mark3 Staged at DP20, TFL Kabrehl will put them in his truck at end of shift.	47° 08.832' N	113° 58.838' W
Pump	In Field	NRK-0148-5785	Mark3 at 73778 Espinoza Dr	47° 08.395' N	113° 59.092' W
Pump	Unknown	NRK-0148-6389	Mark3	47° 07.233' N	113° 59.576' W
Pump	In Field	NRK-0148-6151			
Pump	In Field	NRK-0148-6096			



## Big Knife MT-FHA-00094

Fire Perimeter as of 08/11/2023 2209 hrs  
4,952 Acres

- Other Property
- Pump
- Water Tank
- Helispot
- Division Break
- Drop Point
- Camp
- Completed Dozer Line
- Completed Fuel Break
- Completed Hand Line
- Completed Mixed Construction Line
- Completed Road as Line
- Planned Dozer Line
- Access or Improved Road
- Highlighted Feature
- Other
- Escape Route
- Wildfire Daily Fire Perimeter

