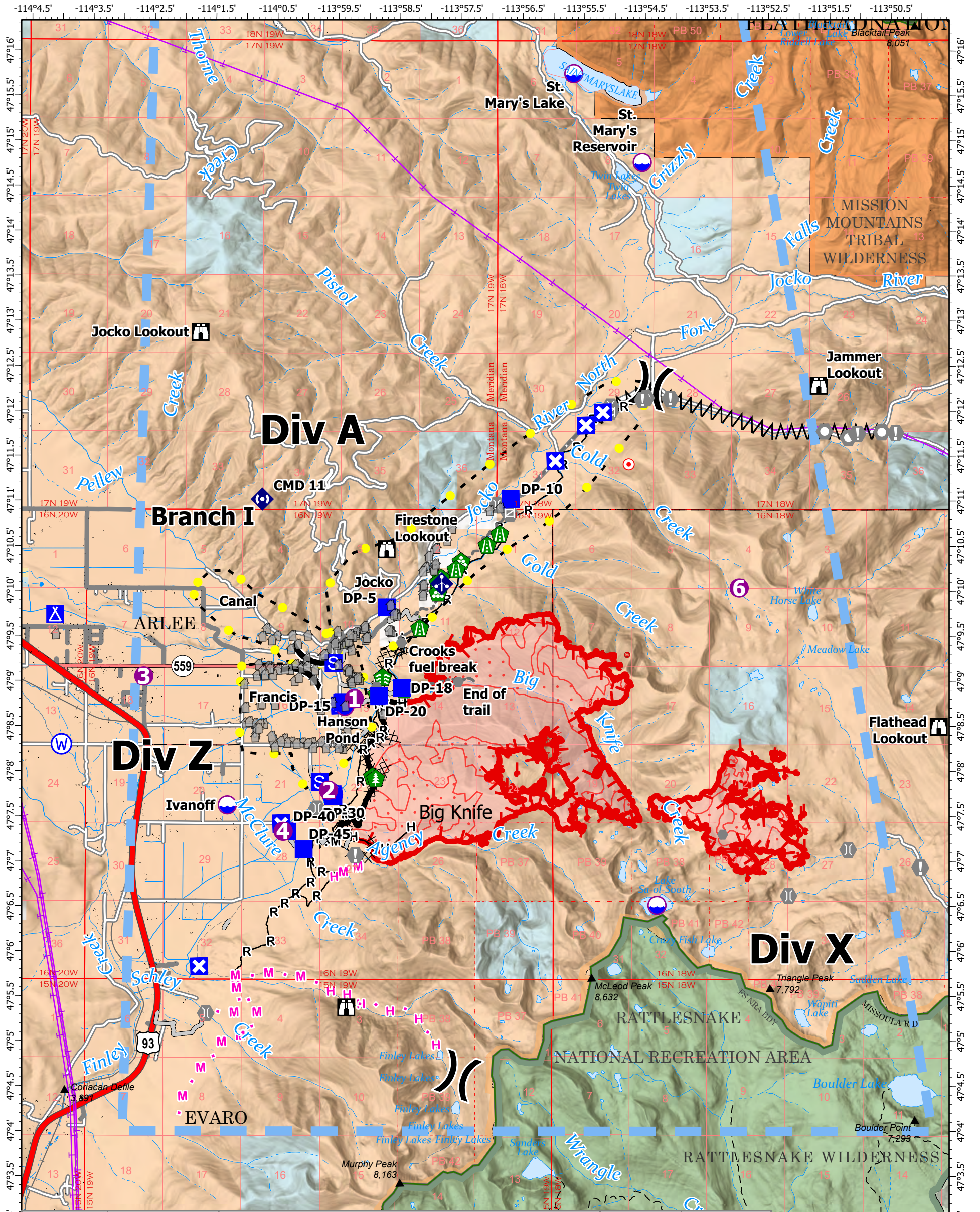


# AIR OPERATIONS - BIG KNIFE

8/12/2023



FeatureCategory	Label	Comments	Latitude	Longitude
Dip Site		Clean bucket or tank prior to use	47° 06.513' N	113° 54.314' W
Dip Site	Hanson Pond	1 mile west of bottom of fire. 3500' elevation (Type 3 Helicopters/Type 2)	47° 08.719' N	113° 59.396' W
Dip Site	Ivanoff	2 miles south and west of fire 3500 elevation (Type 2 Helicopters)	47° 07.622' N	114° 01.305' W
Dip Site	St. Mary's Lake	7 miles north of fire. 4000' elevation (Type 1 Helicopters)	47° 15.747' N	113° 55.678' W
Dip Site	St. Mary's Reservoir		47° 14.760' N	113° 54.561' W
Helispot	1		47° 08.805' N	113° 59.242' W
Helispot	2	Div z near toe of slope	47° 07.787' N	113° 59.659' W
Helispot	3	By Jim Steeles	47° 09.050' N	114° 02.667' W
Helispot	4	Proposed Helispot, approved 8/8/2023	47° 07.329' N	114° 00.395' W
Helispot	6	approved 8/12	47° 10.037' N	113° 52.978' W
Repeater	CMD 11		47° 11.016' N	114° 00.743' W

## Big Knife MT-FHA-000094

Fire Perimeter as of  
08/11/2023 2209 hrs  
4,952 Acres

<ul style="list-style-type: none"> <li>■ Contained</li> <li>■ Uncontained</li> <li>■ Wildfire Daily Fire Perimeter</li> <li>● Dip Site</li> <li>● Helispot</li> <li>● Division Break</li> <li>■ Drop Point</li> </ul>	<ul style="list-style-type: none"> <li>■ Closure</li> <li>■ Camp</li> <li>■ Staging Area</li> <li>■ Lookout</li> <li>● Structure Wrap</li> <li>● Stream Crossing</li> <li>● Road Repair</li> <li>● Landing or Log Deck</li> </ul>	<ul style="list-style-type: none"> <li>○ Landmark</li> <li>○ Gate</li> <li>○ Bridge</li> <li>○ Structure</li> <li>○ Stream Crossing</li> <li>○ Road Repair</li> <li>○ Access or Improved Road</li> </ul>	<ul style="list-style-type: none"> <li>● Hazard Tree</li> <li>● Dozer Push</li> <li>● Repeater</li> <li>● Water Source</li> <li>● Completed Dozer Line</li> <li>● Highlighted Feature</li> </ul>	<ul style="list-style-type: none"> <li>H- Completed Hand Line</li> <li>M- Completed Mixed Construction Line</li> <li>R- Completed Road as Line</li> <li>H Planned Hand Line</li> <li>M Planned Mixed Construction Line</li> <li>■ Access or Improved Road</li> <li>● Completed Fuel Break</li> </ul>	<ul style="list-style-type: none"> <li>■ Other</li> <li>■ Escape Route</li> <li>■ Temporary Flight Restriction</li> <li>■ IR Heat Perimeter</li> <li>■ IR Intense Heat</li> <li>■ IR Scattered Heat</li> <li>■ USFS Wilderness</li> <li>■ Tribal Wilderness Area</li> <li>■ Forest Service Land</li> <li>■ American Indian Lands</li> <li>■ Bureau of Land Management Lands</li> <li>■ State Lands</li> <li>■ USFS Roadless Areas</li> </ul>
---	---	--	--	--	--

