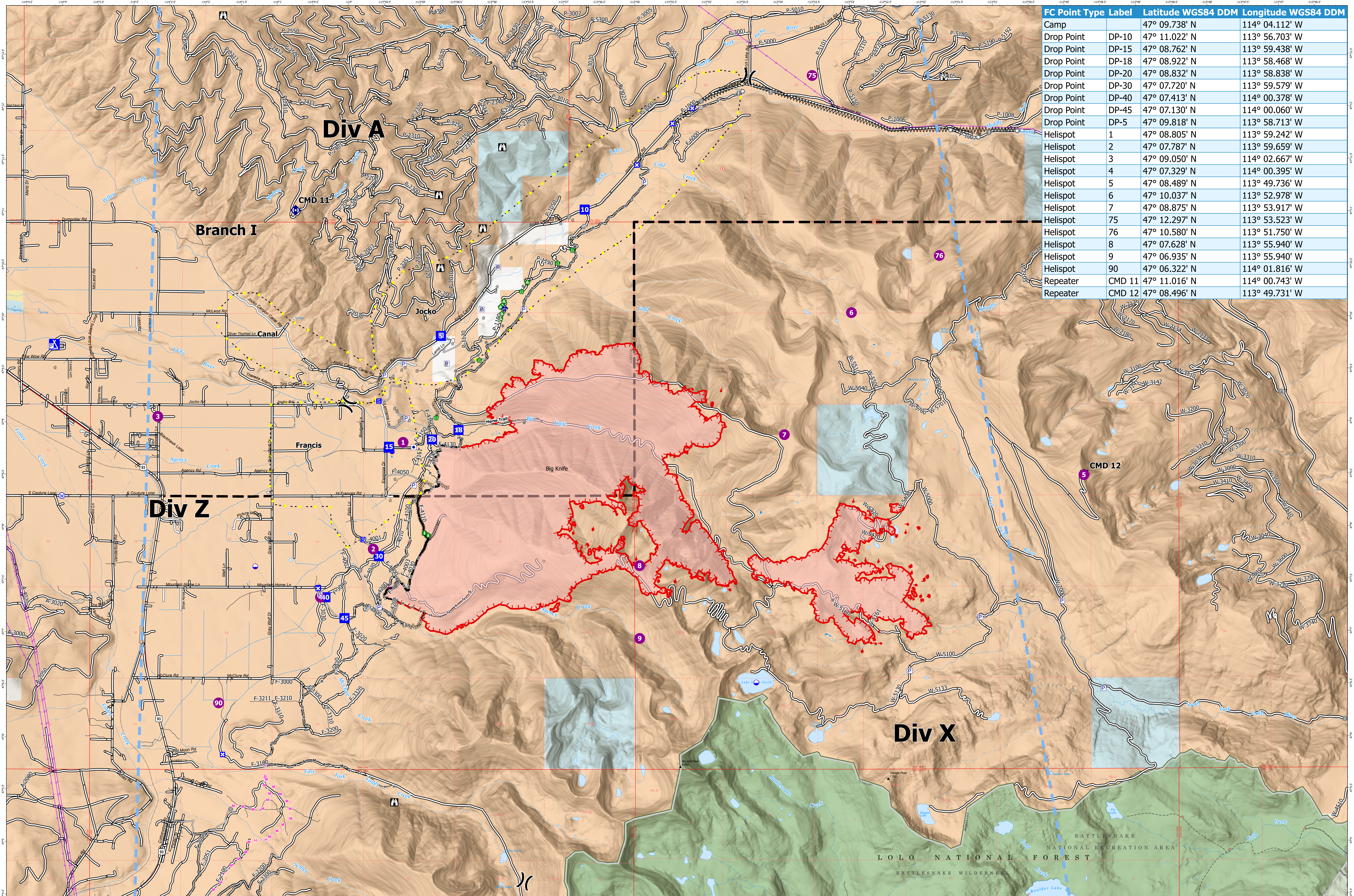


COMMUNICATIONS MAP - BIG KNIFE

8/13/2023



FC Point Type Label	Latitude WGS84 DDM	Longitude WGS84 DDM
Camp	47° 09.738' N	114° 04.112' W
Drop Point DP-10	47° 11.022' N	113° 56.703' W
Drop Point DP-15	47° 08.762' N	113° 59.438' W
Drop Point DP-18	47° 08.922' N	113° 58.468' W
Drop Point DP-20	47° 08.832' N	113° 58.838' W
Drop Point DP-30	47° 07.720' N	113° 59.579' W
Drop Point DP-40	47° 07.413' N	114° 00.378' W
Drop Point DP-45	47° 07.130' N	114° 00.060' W
Drop Point DP-5	47° 09.818' N	113° 58.713' W
Helispot 1	47° 08.805' N	113° 59.242' W
Helispot 2	47° 07.787' N	113° 59.659' W
Helispot 3	47° 09.050' N	114° 02.667' W
Helispot 4	47° 07.329' N	114° 00.395' W
Helispot 5	47° 08.489' N	113° 49.736' W
Helispot 6	47° 10.037' N	113° 52.978' W
Helispot 7	47° 08.875' N	113° 53.917' W
Helispot 75	47° 12.297' N	113° 53.523' W
Helispot 76	47° 10.580' N	113° 51.750' W
Helispot 8	47° 07.628' N	113° 55.940' W
Helispot 9	47° 06.935' N	113° 55.940' W
Helispot 90	47° 06.322' N	114° 01.816' W
Repeater CMD 11	47° 11.016' N	114° 00.743' W
Repeater CMD 12	47° 08.496' N	113° 49.731' W

Big Knife
MT-FHA-00094

Fire Perimeter as of
08/11/2023 2209 hrs
4,952 Acres

- Contained
 - Uncontained
 - Wildfire Daily Fire Perimeter
 - Dip Site
 - Helispot
 - ✕ Division Break
 - Drop Point
- ⊠ Closure
 - Camp
 - Staging Area
 - Lookout
 - Hot Spot - Spot Fire
 - Value at Risk
 - Other
- Landmark
 - Gate
 - Bridge
 - Structure Wrap
 - Stream Crossing
 - Road Repair
 - Landing or Log Deck
 - Hazard Tree
 - Dozer Push
 - Mobile Weather Unit
 - Repeater
 - Water Source
 - Completed Dozer Line
 - Completed Fuel Break
- Completed Hand Line
 - Completed Mixed Construction Line
 - Completed Road as Line
 - Planned Dozer Line
 - Planned Hand Line
 - Planned Mixed Construction Line
 - Access or Improved Road
 - Highlighted Feature
 - Other
 - Escape Route
 - Temporary Flight Restriction
 - Structure
 - Transmission Lines
 - Primary Highway
 - Secondary Highway
 - Secondary Paved
 - Secondary Dirt
 - Trail
 - Forest Service Roads Closed
 - Railroad
 - Tribal Wilderness Boundary
- County Boundary
 - Township
 - Protracted Section
 - Section
 - USFS Roadless Areas
 - USFS Wilderness
 - Tribal Wilderness Area
 - American Indian Lands
 - Forest Service Land
 - American Indian Lands
 - Bureau of Land Management Lands
 - State Lands

