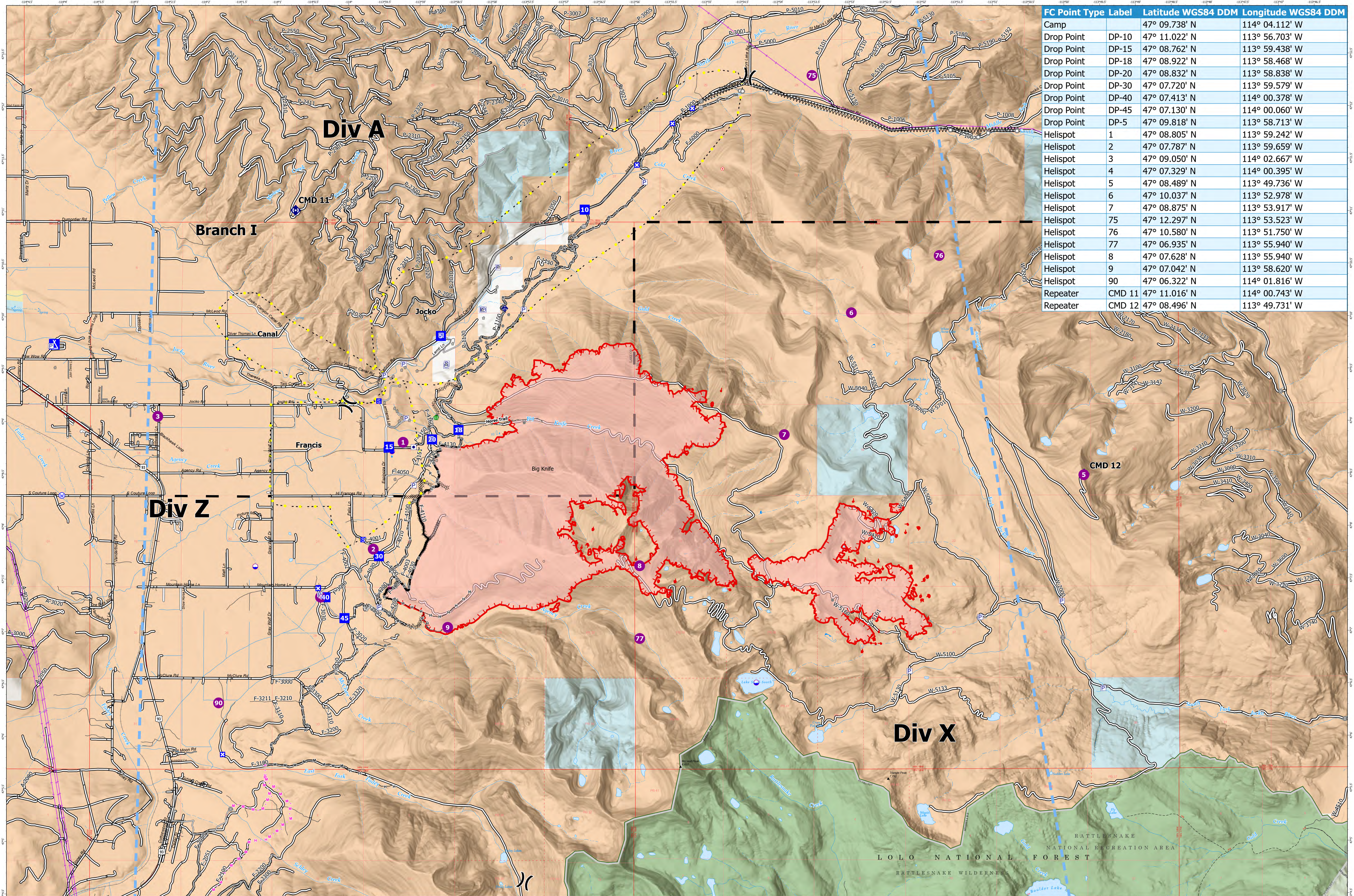


COMMUNICATIONS MAP - BIG KNIFE

8/14/2023



| FC Point Type Label | Latitude WGS84 DDM | Longitude WGS84 DDM |
|---------------------|--------------------|---------------------|
| Camp | 47° 09.738' N | 114° 04.112' W |
| Drop Point DP-10 | 47° 11.022' N | 113° 56.703' W |
| Drop Point DP-15 | 47° 08.762' N | 113° 59.438' W |
| Drop Point DP-18 | 47° 08.922' N | 113° 58.468' W |
| Drop Point DP-20 | 47° 08.832' N | 113° 58.838' W |
| Drop Point DP-30 | 47° 07.720' N | 113° 59.579' W |
| Drop Point DP-40 | 47° 07.413' N | 114° 00.378' W |
| Drop Point DP-45 | 47° 07.130' N | 114° 00.060' W |
| Drop Point DP-5 | 47° 09.818' N | 113° 58.713' W |
| Helispot 1 | 47° 08.805' N | 113° 59.242' W |
| Helispot 2 | 47° 07.787' N | 113° 59.659' W |
| Helispot 3 | 47° 09.050' N | 114° 02.667' W |
| Helispot 4 | 47° 07.329' N | 114° 00.395' W |
| Helispot 5 | 47° 08.489' N | 113° 49.736' W |
| Helispot 6 | 47° 10.037' N | 113° 52.978' W |
| Helispot 7 | 47° 08.875' N | 113° 53.917' W |
| Helispot 75 | 47° 12.297' N | 113° 53.523' W |
| Helispot 76 | 47° 10.580' N | 113° 51.750' W |
| Helispot 77 | 47° 06.935' N | 113° 55.940' W |
| Helispot 8 | 47° 07.628' N | 113° 55.940' W |
| Helispot 9 | 47° 07.042' N | 113° 58.620' W |
| Helispot 90 | 47° 06.322' N | 114° 01.816' W |
| Repeater CMD 11 | 47° 11.016' N | 114° 00.743' W |
| Repeater CMD 12 | 47° 08.496' N | 113° 49.731' W |

Big Knife MT-FHA-00094

Fire Perimeter as of 08/14/2023 0002 hrs
4,952 Acres

- Dip Site
- Helispot
- X Division Break
- Drop Point
- Closure
- Camp
- Staging Area
- Hot Spot - Spot Fire
- Repeater
- Landmark
- Gate
- Bridge
- Stream Crossing
- Mobile Weather Unit
- Water Source
- ** Completed Dozer Line
- M Completed Fuel Break
- Completed Hand Line
- Completed Mixed Construction Line
- R Completed Road as Line
- P Planned Dozer Line
- H Planned Hand Line
- M Planned Mixed Construction Line
- Access or Improved Road
- Highlighted Feature
- Escape Route
- Temporary Flight Restriction
- Wildfire Daily Fire Perimeter
- Structure
- Contained
- Uncontained
- Transmission Lines
- Primary Highway
- Secondary Highway
- Secondary Paved
- Secondary Dirt
- Trail
- Forest Service Roads Closed
- Railroad
- Tribal Wilderness Boundary
- County Boundary
- Township
- Protracted Section
- Section
- USFS Roadless Areas
- USFS Wilderness
- Tribal Wilderness Area
- American Indian Lands
- Forest Service Land
- American Indian Lands
- Bureau of Land Management Lands
- State Lands

