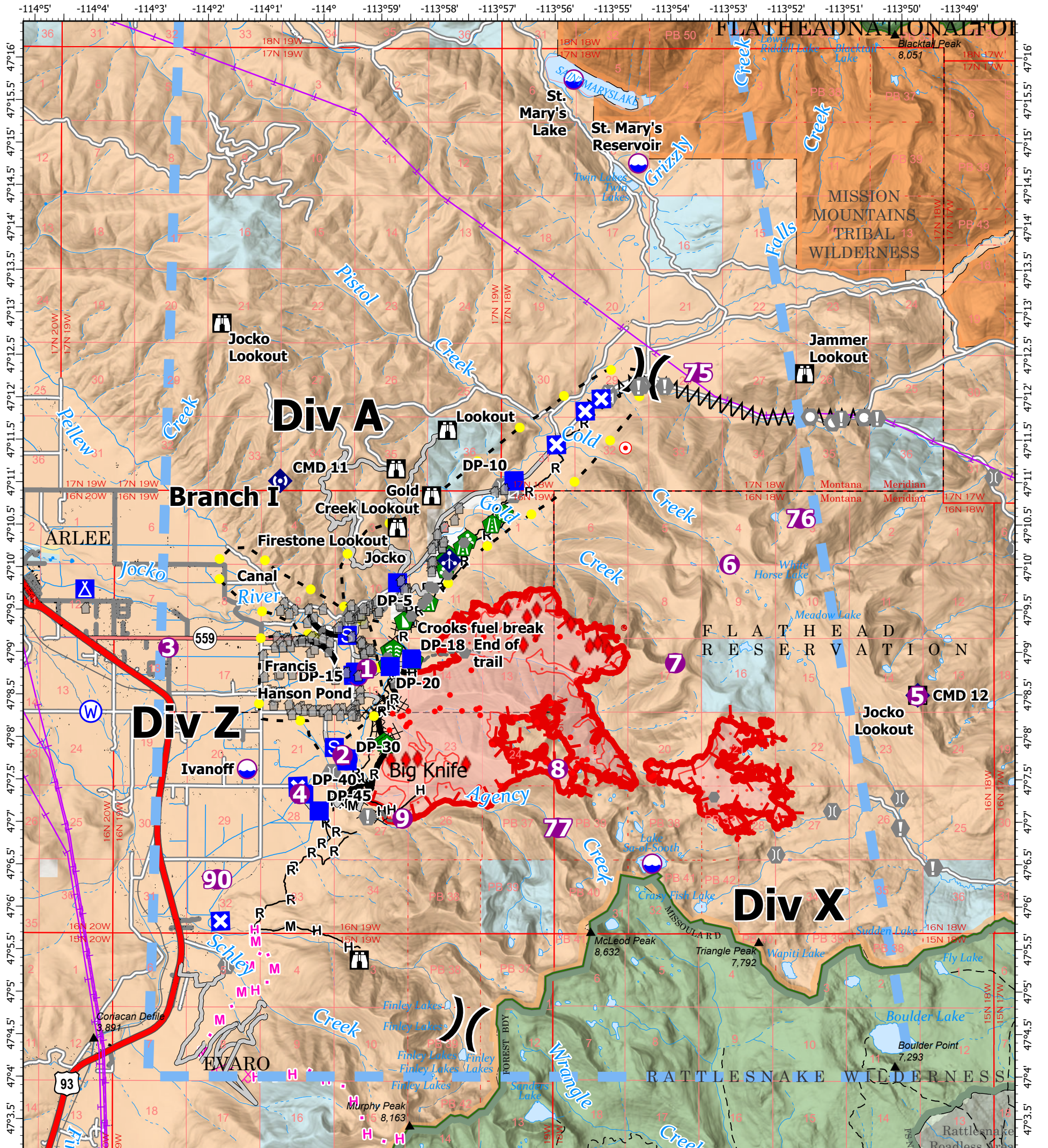


AIR OPERATIONS - BIG KNIFE

8/15/2023



FeatureCategory	Label	Comments	Latitude	Longitude
Dip Site		Clean bucket or tank prior to use	47° 06.513' N	113° 54.314' W
Dip Site	Hanson Pond	1 mile west of bottom of fire. 3500' elevation (Type 3 Helicopters/Type 2)	47° 08.719' N	113° 59.396' W
Dip Site	Ivanoff	2 miles south and west of fire 3500 elevation (Type 2 Helicopters)	47° 07.622' N	114° 01.305' W
Dip Site	St. Mary's Lake	7 miles north of fire. 4000' elevation (Type 1 Helicopters)	47° 15.747' N	113° 55.678' W
Dip Site	St. Mary's Reservoir		47° 14.760' N	113° 54.561' W
Helispot	1		47° 08.805' N	113° 59.242' W
Helispot	2	Div z near toe of slope	47° 07.787' N	113° 59.659' W
Helispot	3	By Jim Steeles	47° 09.050' N	114° 02.667' W
Helispot	4	Proposed Helispot, approved 8/8/2023	47° 07.329' N	114° 00.395' W
Helispot	5	Jocko Lookout. Approved 8/11/2023 by Helicopter 353E	47° 08.489' N	113° 49.736' W
Helispot	6	approved 8/12	47° 10.037' N	113° 52.978' W
Helispot	7	Approved 8/11/2023 by Helicopter 353E	47° 08.875' N	113° 53.917' W
Helispot	75	Jocko Prairie. Approved by Helicopter 535E	47° 12.297' N	113° 53.523' W
Helispot	76		47° 10.580' N	113° 51.750' W
Helispot	77	Approved by Helicopter 353E 8/11/2023	47° 06.935' N	113° 55.940' W
Helispot	8	Approved 8/11/2023 by Helicopter 353E	47° 07.628' N	113° 55.940' W
Helispot	9		47° 07.042' N	113° 58.620' W
Helispot	90	Unapproved Medevac good for a type 3 ship. Ask for manager approval and possibly on private	47° 06.322' N	114° 01.816' W
Repeater	CMD 11		47° 11.016' N	114° 00.743' W
Repeater	CMD 12		47° 08.496' N	113° 49.731' W

Big Knife MT-FHA-000094

Fire Perimeter as of
08/14/2023 0002 hrs
4,952 Acres

<ul style="list-style-type: none"> ■ Contained ■ Uncontained ■ Wildfire Daily Fire Perimeter ● IR Isolated Heat Source ● Possible IR Heat Source ■ IR Heat Perimeter ■ IR Intense Heat 	<ul style="list-style-type: none"> ■ IR Scattered Heat ● Dip Site ● Helispot ● Division Break ■ Drop Point ■ Closure ■ Camp 	<ul style="list-style-type: none"> ● Staging Area ● Lookout ● Hot Spot - Spot Fire ● Value at Risk ● Other ● Landmark ● Gate 	<ul style="list-style-type: none"> ● Bridge ● Structure Wrap ● Stream Crossing ● Road Repair ● Landing or Log Deck ● Hazard Tree ● Dozer Push 	<ul style="list-style-type: none"> ● Mobile Weather Unit ● Repeater ● Water Source ● Completed Dozer Line ● Completed Fuel Break ● Completed Hand Line ● Completed Mixed Construction Line 	<ul style="list-style-type: none"> R- Completed Road as Line ■ Planned Dozer Line ■ Planned Hand Line ■ Planned Mixed Construction Line ■ Access or Improved Road ■ Highlighted Feature ■ Other 	<ul style="list-style-type: none"> ■ Escape Route ■ Temporary Flight Restriction ■ USFS Roadless Areas ■ USFS Wilderness ■ Tribal Wilderness Area ■ Forest Service Land
---	--	---	--	---	--	---

Miles 0 0.5 1