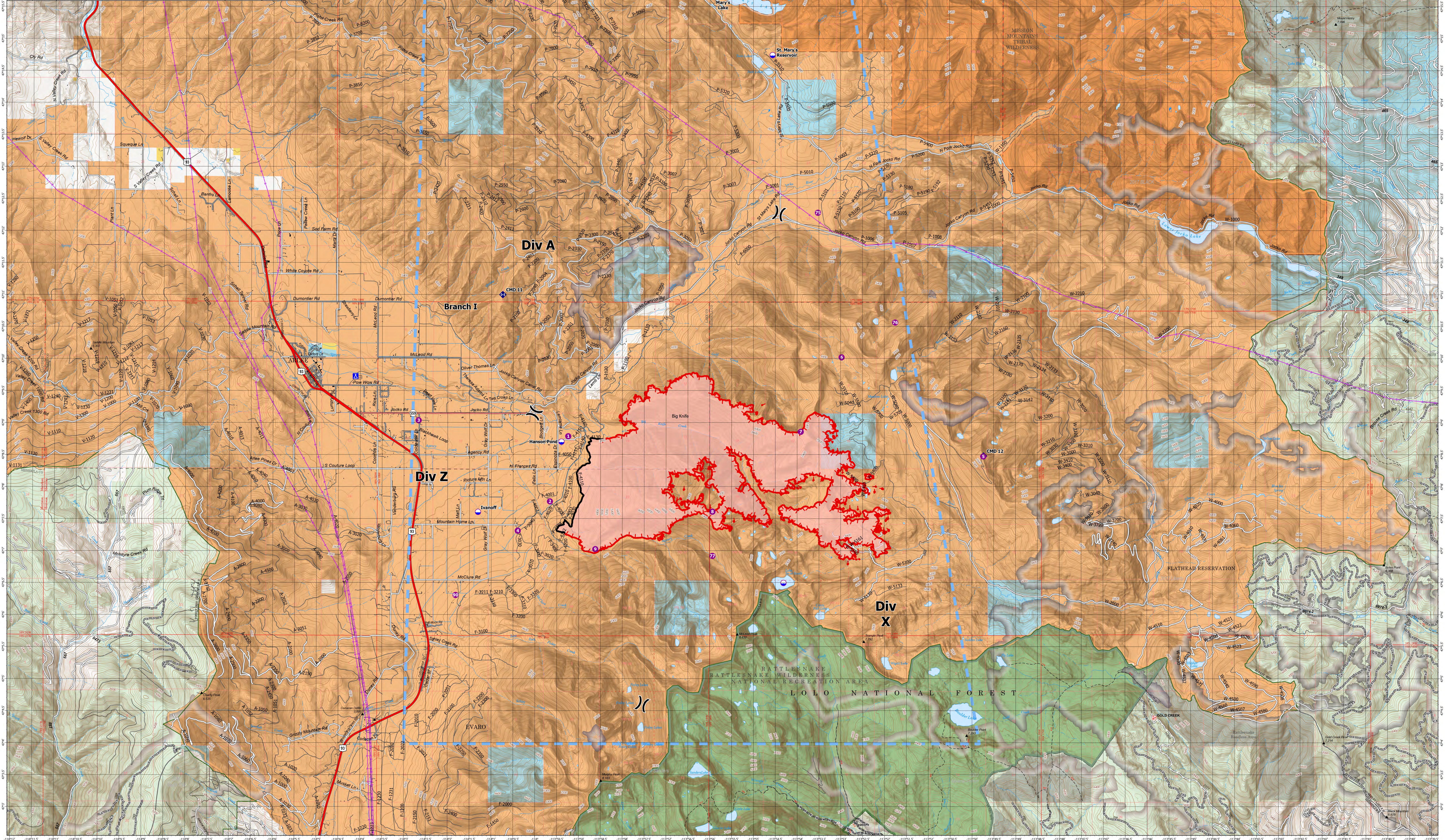


AIR OPERATIONS - BIG KNIFE

8/16/2023

Incident Name/FC Point Type/Label	Comments	Latitude WGS84 DDMM	Longitude WGS84 DDMM
Big Knife Camp		47° 09.272' N	113° 54.122' W
Big Knife Dip Site	Clear bucket or tank prior to use	47° 08.553' N	113° 54.334' W
Big Knife Dip Site	Hanson Pond 1 mile west of bottom of the 3500' elevation (Type 3 Helicopters/Type 2)	47° 08.727' N	113° 55.396' W
Big Knife Dip Site	Uncontaminated	47° 07.627' N	113° 54.302' W
Big Knife Dip Site	St. Mary's Lake 7 miles north of this 4000' elevation (Type 1 Helicopters)	47° 15.747' N	113° 55.678' W
Big Knife Dip Site	St. Mary's Reservoir	47° 14.707' N	113° 54.561' W
Big Knife Helispot 1		47° 08.487' N	113° 54.822' W
Big Knife Helispot 2	Div z rear base of slope	47° 07.827' N	113° 59.659' W
Big Knife Helispot 3	By Jim Swales	47° 09.057' N	114° 02.667' W
Big Knife Helispot 4	Proposed Helispot, approved 8/8/2023	47° 08.227' N	113° 54.399' W
Big Knife Helispot 5	Jacko Lookout, Approved 8/11/2023 by Helicopter 353E	47° 08.487' N	113° 49.736' W
Big Knife Helispot 6	Approved 8/12/2023 by Helicopter 353E	47° 08.057' N	113° 53.957' W
Big Knife Helispot 7	Approved 8/11/2023 by Helicopter 353E	47° 08.487' N	113° 54.822' W
Big Knife Helispot 7S	Jacko Peak, Approved by Helicopter 353E	47° 12.267' N	113° 53.527' W
Big Knife Helispot 8		47° 08.487' N	113° 54.822' W
Big Knife Helispot 9	Approved by Helicopter 353E 8/11/2023	47° 06.957' N	113° 55.969' W
Big Knife Helispot 10	Approved 8/12/2023 by Helicopter 353E	47° 07.627' N	113° 55.488' W
Big Knife Helispot 11		47° 07.627' N	113° 56.858' W
Big Knife Helispot 12	Unapproved Modava, good for a type 3 ship. Ask for manager approval and possibly on airfield	47° 06.327' N	114° 01.818' W
Big Knife Repeater CMD 11		47° 11.057' N	114° 00.747' W
Big Knife Repeater CMD 12		47° 08.487' N	113° 47.717' W



Big Knife MT-FHA-00094

Fire Perimeter as of 08/15/2023 2132 hrs
6,106 Acres

<ul style="list-style-type: none"> Dip Site Helispot Division Break Camp Repeater 	<ul style="list-style-type: none"> Temporary Flight Restriction Wildfire Daily Fire Perimeter Contained Uncontaminated Trailhead Transmission Lines 	<ul style="list-style-type: none"> Primary Highway Secondary Highway Secondary Paved Secondary Dirt Secondary Paved Secondary Dirt Trail Paved 	<ul style="list-style-type: none"> Gravel Road Dirt Road Unimproved Road Forest Service Roads Closed Railroad Administrative FS Boundary Ranger District Boundary FS Wilderness Boundary 	<ul style="list-style-type: none"> Other Designated Boundary Indian Reservation Tribal Wilderness Boundary County Boundary Conservation Designated Place Township Protracted Section Section 	<ul style="list-style-type: none"> Historic Fire 2016-2018 Historic Fire 2010-2015 Historic Fire 2000-2009 USFS Roadless Areas USFS Wilderness Tribal Wilderness Area American Indian Lands Forest Service Land 	<ul style="list-style-type: none"> American Indian Lands Bureau of Land Management Lands State Lands
--	---	--	--	--	---	---

