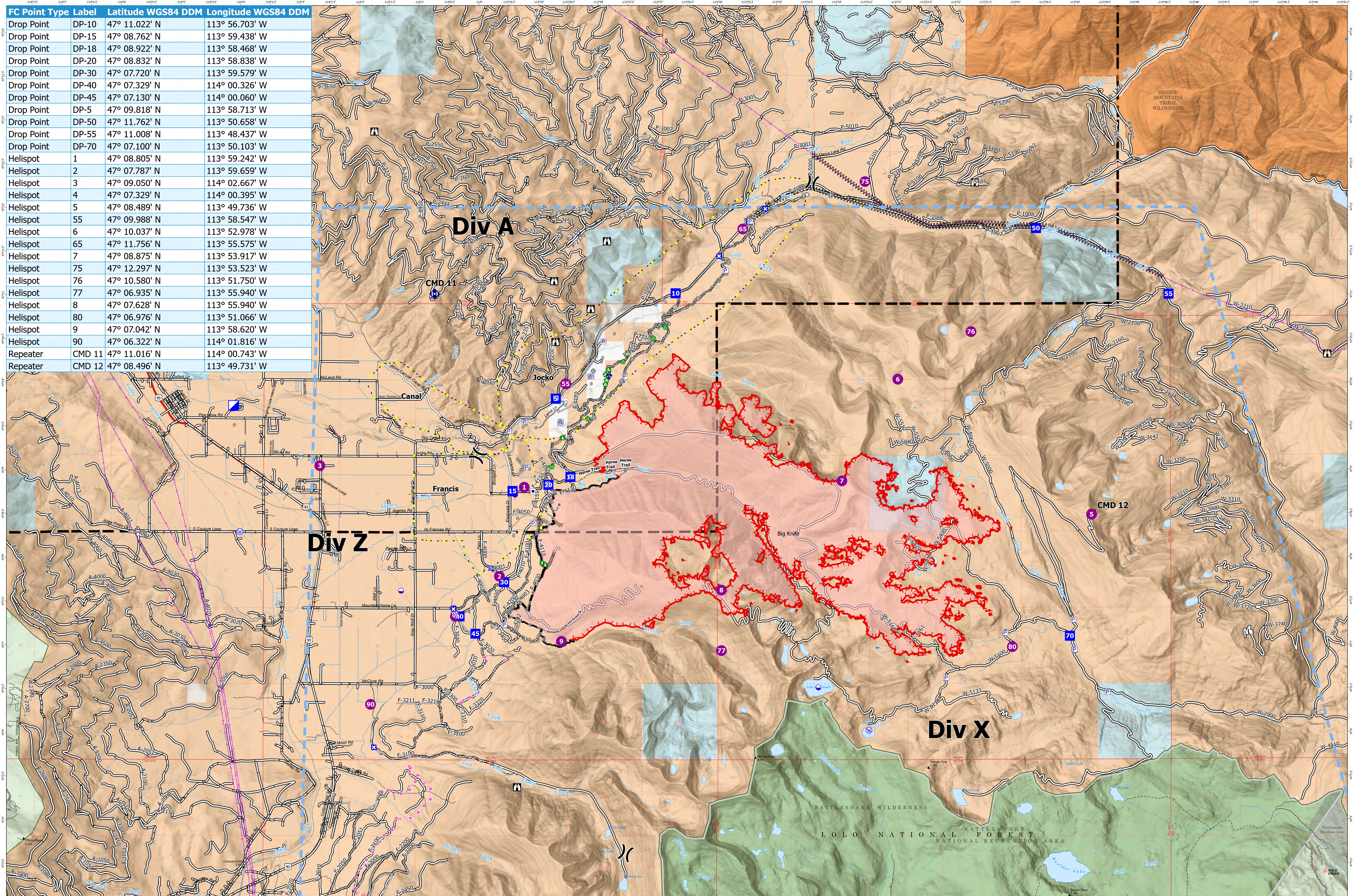


FC Point Type	Label	Latitude WGS84 DDM	Longitude WGS84 DDM
Drop Point	DP-10	47° 11.022' N	113° 56.703' W
Drop Point	DP-15	47° 08.762' N	113° 59.438' W
Drop Point	DP-18	47° 08.922' N	113° 58.468' W
Drop Point	DP-20	47° 08.832' N	113° 58.838' W
Drop Point	DP-30	47° 07.720' N	113° 59.579' W
Drop Point	DP-40	47° 07.329' N	114° 00.326' W
Drop Point	DP-45	47° 07.130' N	114° 00.060' W
Drop Point	DP-5	47° 09.818' N	113° 58.713' W
Drop Point	DP-50	47° 11.762' N	113° 50.658' W
Drop Point	DP-55	47° 11.008' N	113° 48.437' W
Drop Point	DP-70	47° 07.100' N	113° 50.103' W
Helispot	1	47° 08.805' N	113° 59.242' W
Helispot	2	47° 07.787' N	113° 59.659' W
Helispot	3	47° 09.050' N	114° 02.667' W
Helispot	4	47° 07.329' N	114° 00.395' W
Helispot	5	47° 08.489' N	113° 49.736' W
Helispot	55	47° 09.988' N	113° 58.547' W
Helispot	6	47° 10.037' N	113° 52.978' W
Helispot	65	47° 11.756' N	113° 55.575' W
Helispot	7	47° 08.875' N	113° 53.917' W
Helispot	75	47° 12.297' N	113° 53.523' W
Helispot	76	47° 10.580' N	113° 51.750' W
Helispot	77	47° 06.935' N	113° 55.940' W
Helispot	8	47° 07.628' N	113° 55.940' W
Helispot	80	47° 06.976' N	113° 51.066' W
Helispot	9	47° 07.042' N	113° 58.620' W
Helispot	90	47° 06.322' N	114° 01.816' W
Repeater	CMD 11	47° 11.016' N	114° 00.743' W
Repeater	CMD 12	47° 08.496' N	113° 49.731' W



**Big Knife
MT-FHA-00094**

Fire Perimeter as of
08/22/2023 0646 hrs
7,275 Acres

<ul style="list-style-type: none"> — Contained — Uncontained — Wildfire Daily Fire Perimeter ● Dip Site ● Helispot × Division Break ■ Incident Command Post 	<ul style="list-style-type: none"> ■ Drop Point ■ Closure ■ Staging Area ■ Lookout ■ Hot Spot - Spot Fire ● Value at Risk ● Other 	<ul style="list-style-type: none"> ○ Landmark ○ Gate ○ Bridge ○ Structure Wrap ○ Stream Crossing ○ Road Repair ○ Repair Point 	<ul style="list-style-type: none"> ● Landing or Log Deck ● Hazard Tree — Completed Hand Line — Completed Mixed Construction Line — Completed Road as Line — Completed Dozer Line — Planned Hand Line 	<ul style="list-style-type: none"> — Completed Dozer Line — Completed Fuel Break — Completed Hand Line — Completed Mixed Construction Line — Completed Road as Line — Completed Dozer Line — Planned Hand Line 	<ul style="list-style-type: none"> — Planned Mixed Construction Line — Access or Improved Road — Highlighted Feature — Other — Escape Route — Temporary Flight Restriction ● Structure 	<ul style="list-style-type: none"> ● Trailhead — Transmission Lines — Primary Highway — Secondary Highway — Secondary Paved — Secondary Dirt — Trail 	<ul style="list-style-type: none"> — Forest Service Roads Closed — Railroad — Tribal Wilderness Boundary — County Boundary — Township — Protracted Section — Section 	<ul style="list-style-type: none"> — USFS Roadless Areas — USFS Wilderness — Tribal Wilderness Area — American Indian Lands — Forest Service Land — American Indian Lands — Bureau of Land Management Lands 	<ul style="list-style-type: none"> — State Lands
--	--	--	---	---	---	---	---	--	---

