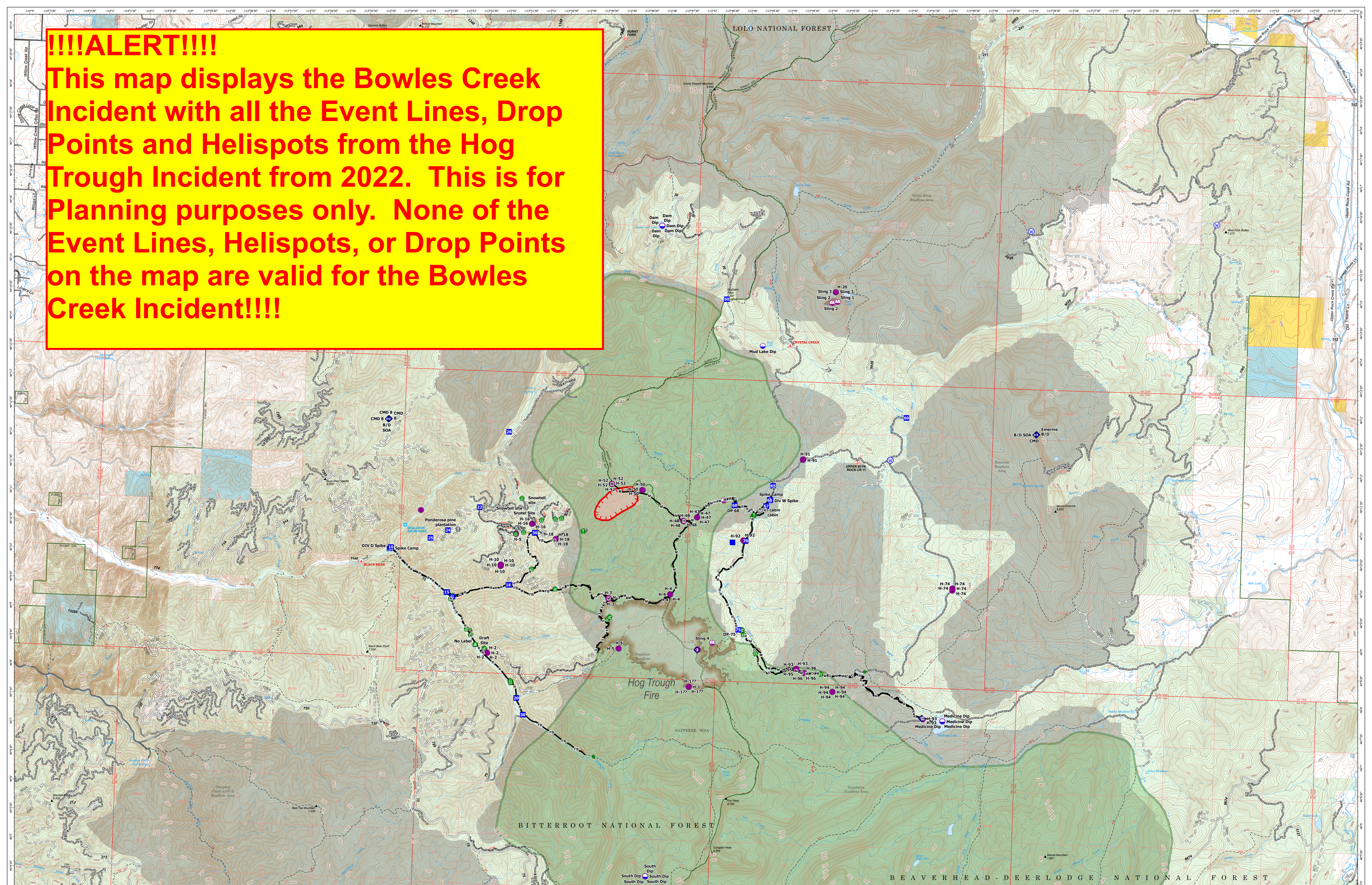


!!!!ALERT!!!!

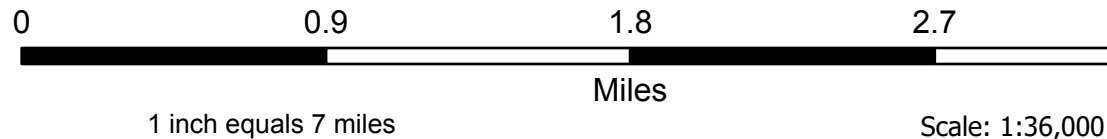
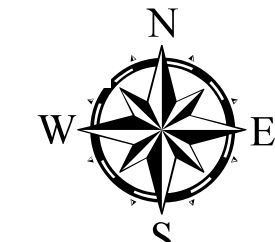
This map displays the Bowles Creek Incident with all the Event Lines, Drop Points and Helispots from the Hog Trough Incident from 2022. This is for Planning purposes only. None of the Event Lines, Helispots, or Drop Points on the map are valid for the Bowles Creek Incident!!!!



Operations

Bowles Creek
 MT-BDF-006210
 234 acres
 7/21/2023

Fire perimeter updated from
 Acres from FireGuard on 07/21/23 1622hrs



- | | | | | | |
|--|--|--|--|--|--|
| <ul style="list-style-type: none"> ■ Structure ▭ Uncontained — Secondary Highway — Primary Paved — Secondary Paved — State Road (Dirt) — County Road (Dirt) | <ul style="list-style-type: none"> — Secondary Dirt ~ Paved ~ Gravel Road ~ Dirt Road ~ Unimproved Road ~ Forest Service Roads Closed ■ USFS Roadless Areas | <ul style="list-style-type: none"> ▭ FS Wilderness Study Area Boundary ▭ Forest Service Land ▭ Bureau of Land Management Lands ▭ State Lands ● Dip Site ● Helispot ● Sling Site | <ul style="list-style-type: none"> ● Unimproved Landing Area ■ Drop Point ■ Camp ■ Staging Area ● Value at Risk ● Water Development or Draft Site ● Stream Crossing | <ul style="list-style-type: none"> ● Road Repair ● Resource Location ● Repair Point ● Landing or Log Deck ◆ Internet Access ◆ Repeater ● Water Source | <ul style="list-style-type: none"> — Completed Dozer Line — Completed Fuel Break — Completed Hand Line — Completed Mixed Construction Line — Completed Road as Line — Access or Improved Road ■ Wildfire Daily Fire Perimeter |
|--|--|--|--|--|--|



Remote Incident Support Team
 7/21/2023 1717
 North American 1983 Datum.
 Lat/Long Grid

Operations