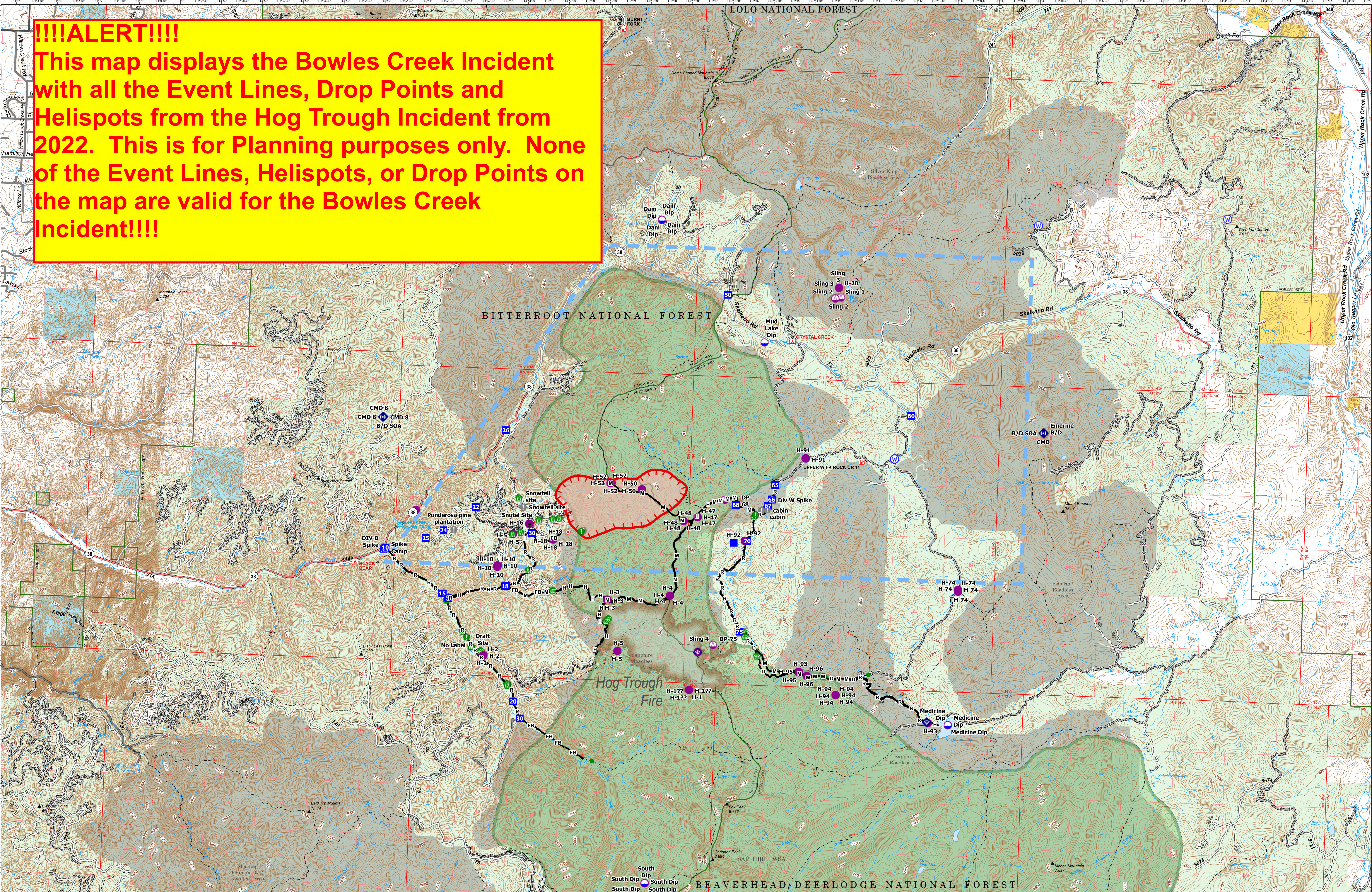


**!!!!ALERT!!!!**

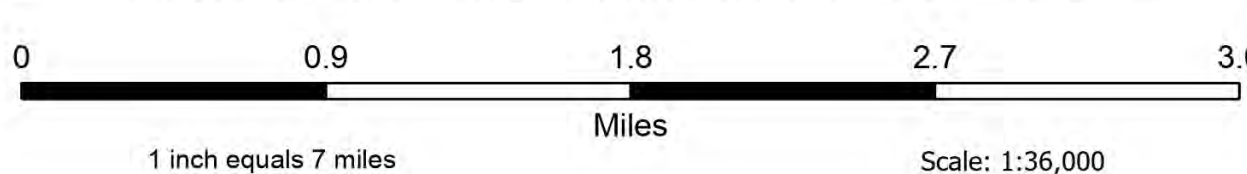
**This map displays the Bowles Creek Incident with all the Event Lines, Drop Points and Helispots from the Hog Trough Incident from 2022. This is for Planning purposes only. None of the Event Lines, Helispots, or Drop Points on the map are valid for the Bowles Creek Incident!!!!**



**Operations**

Bowles Creek  
 MT-BDF-006210  
 1433 acres  
 07/23/2023

Fire perimeter updated from  
 Acres from GPS-flight on 07/22/23 1724hrs



- Structure
- County Road (Dirt)
- FS Wilderness Study Area Boundary
- Drop Point
- Repair Point
- Completed Mixed Construction Line
- Hot Spot - Spot Fire
- Secondary Dirt
- Forest Service Land
- Camp
- Landing or Log Deck
- Temporary Flight Restriction
- Paved
- Bureau of Land Management Lands
- Staging Area
- Internet Access
- Uncontained
- Gravel Road
- State Lands
- Value at Risk
- Repeater
- Secondary Highway
- Dirt Road
- Dip Site
- Water Development or Draft Site
- Water Source
- Primary Paved
- Unimproved Road
- Stream Crossing
- Completed Dozer Line
- Secondary Paved
- Forest Service Roads Closed
- Road Repair
- Completed Fuel Break
- State Road (Dirt)
- USFS Roadless Areas
- Unimproved Landing Area
- Resource Location
- Completed Hand Line



Remote Incident Support Team  
 7/2/2023 2326  
 North American 1983 Datum.  
 LatLong Grid

Operations