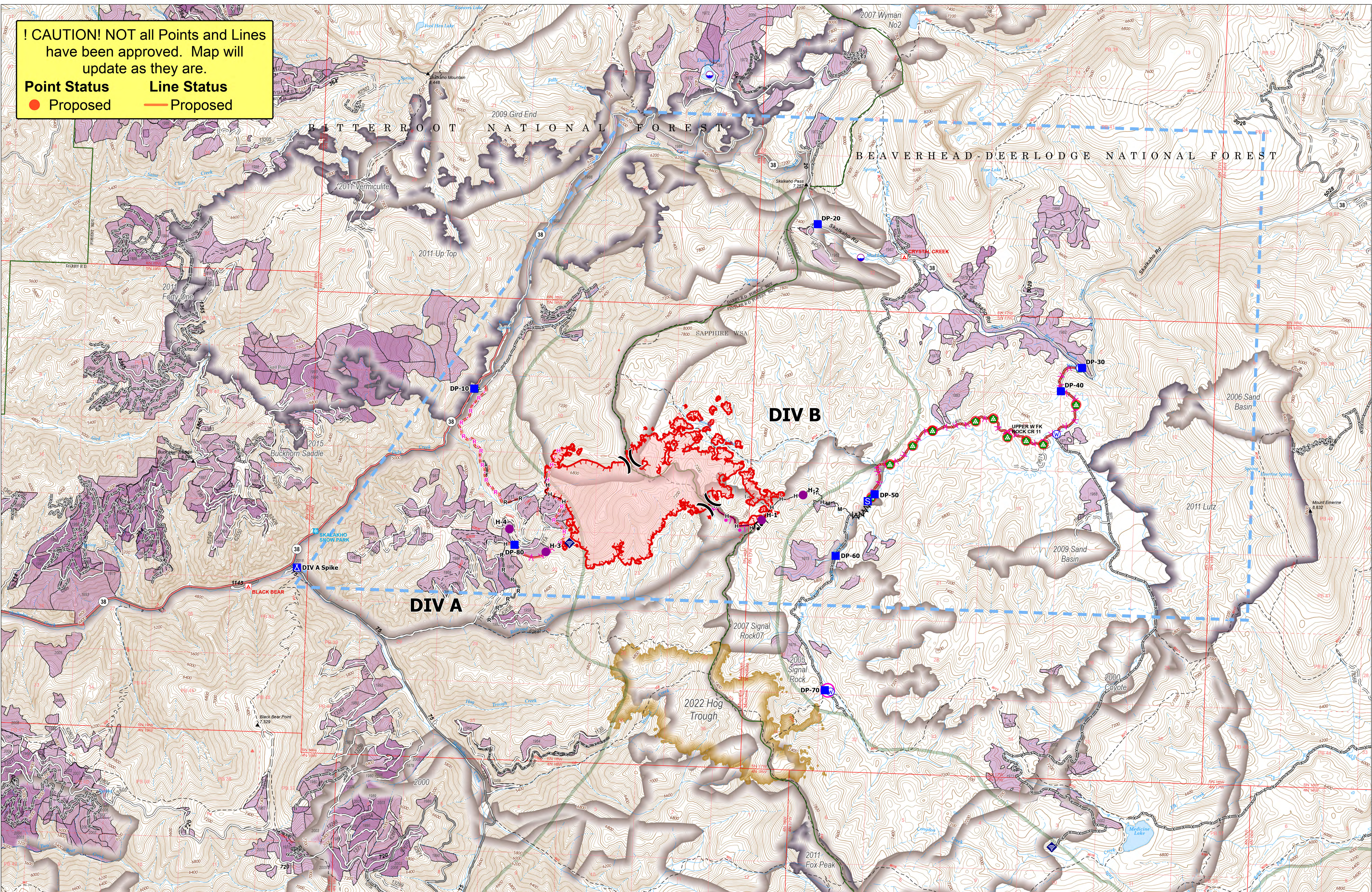


! CAUTION! NOT all Points and Lines have been approved. Map will update as they are.

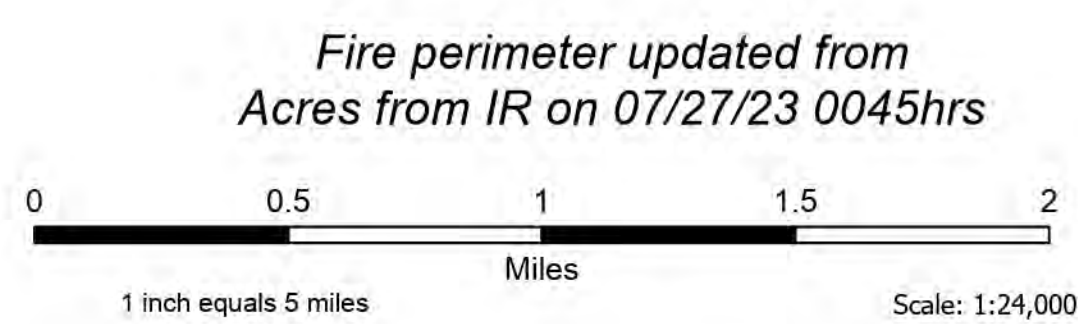
Point Status **Line Status**

● Proposed — Proposed



Operations

Bowles Creek
 MT-BDF-006210
 1698 acres
 7/27/2023



Forest Name	Burned Acres
Bitterroot National Forest	1151.2
Beaverhead-Deerlodge National Forest	547.2

- Structure
- Dip Site
- Helispot
- ✕ Division Break
- Drop Point
- Camp
- Staging Area
- Water Development or Draft Site

- ◆ Landing or Log Deck
- ◆ Internet Access
- ⊙ Water Source
- ⌘ Completed Burnout
- ⌘ Completed Fuel Break
- ⌘ Completed Hand Line
- ⌘ Completed Mixed Construction Line
- ⌘ Completed Road as Line

- Planned Burnout
- ▲ Planned Fuel Break
- ⌘ Planned Hand Line
- ⌘ Planned Road as Line
- Temporary Flight Restriction
- Uncontained
- Wildfire Daily Fire Perimeter
- Secondary Highway

- State Road (Dirt)
- Secondary Dirt
- ~ Gravel Road
- ~ Dirt Road
- ~ Unimproved Road
- Forest Service Roads Closed
- FS Wilderness Study Area Boundary
- 2022 Historic Fire Perimeter

- Historic Fire 2010-2015
- Historic Fire 2000-2009
- Past Timber Harvest Year
- Labeled with Year Completed

