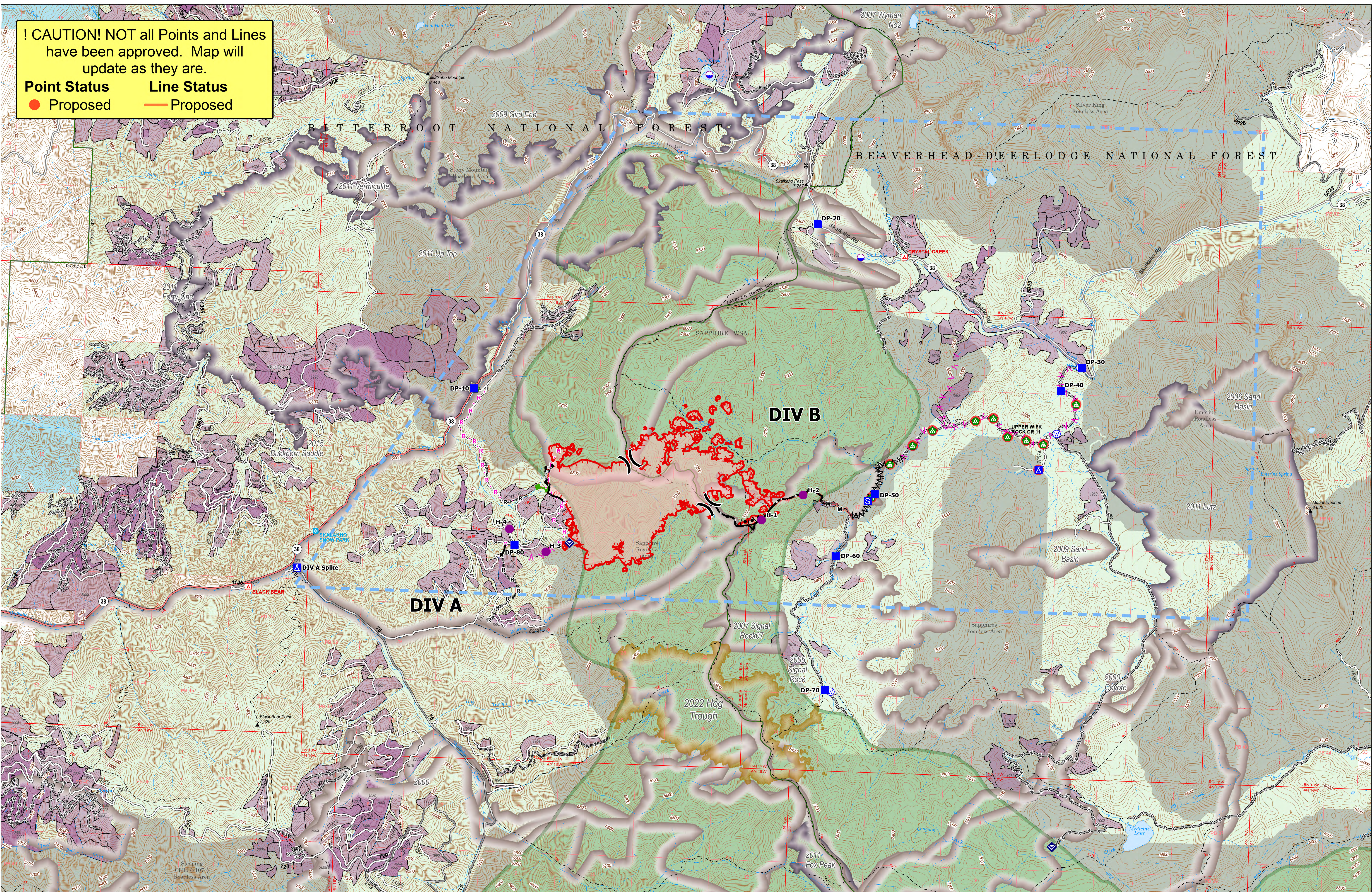


! CAUTION! NOT all Points and Lines have been approved. Map will update as they are.

Point Status **Line Status**

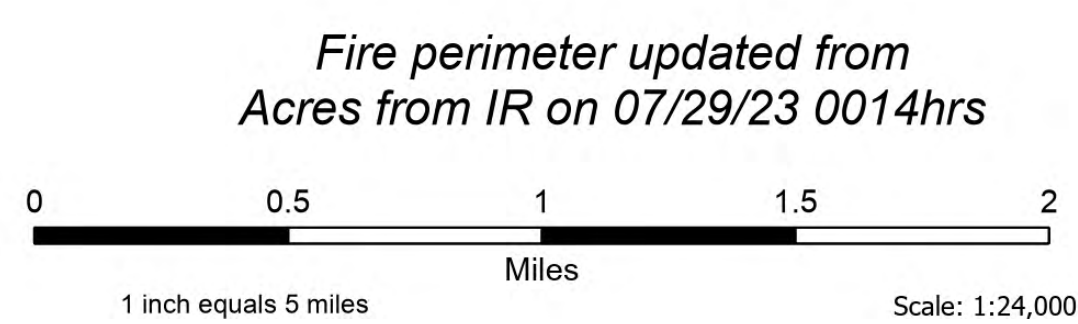
● Proposed — Proposed



Operations

Bowles Creek
 MT-BDF-006210
 1714 acres
 07/30/2023

Forest Name	Burned Acres
Bitterroot National Forest	1164.5
Beaverhead-Deerlodge National Forest	549.1



- Structure
- Dip Site
- Helispot
- ⊗ Division Break
- Drop Point
- Camp
- Staging Area
- ◆ Water Development or Draft Site
- ◆ Landing or Log Deck
- ◆ Internet Access
- Water Source
- ⊔ Completed Burnout
- ⊔ Completed Fuel Break
- Completed Hand Line
- Completed Mixed Construction Line
- Completed Road as Line
- Planned Fuel Break
- Planned Hand Line
- Planned Road as Line
- Other
- Escape Route
- Temporary Flight Restriction
- Uncontained
- Wildfire Daily Fire Perimeter
- Secondary Highway
- State Road (Dirt)
- Secondary Dirt
- Gravel Road
- Dirt Road
- Unimproved Road
- Forest Service Roads Closed
- USFS Roadless Areas
- FS Wilderness Study Area Boundary
- Forest Service Land
- Bureau of Land Management Lands
- State Lands
- 2022 Historic Fire Perimeter
- Historic Fire 2010-2015
- Historic Fire 2000-2009
- Past Timber Harvest Year
- Labeled with Year Completed

