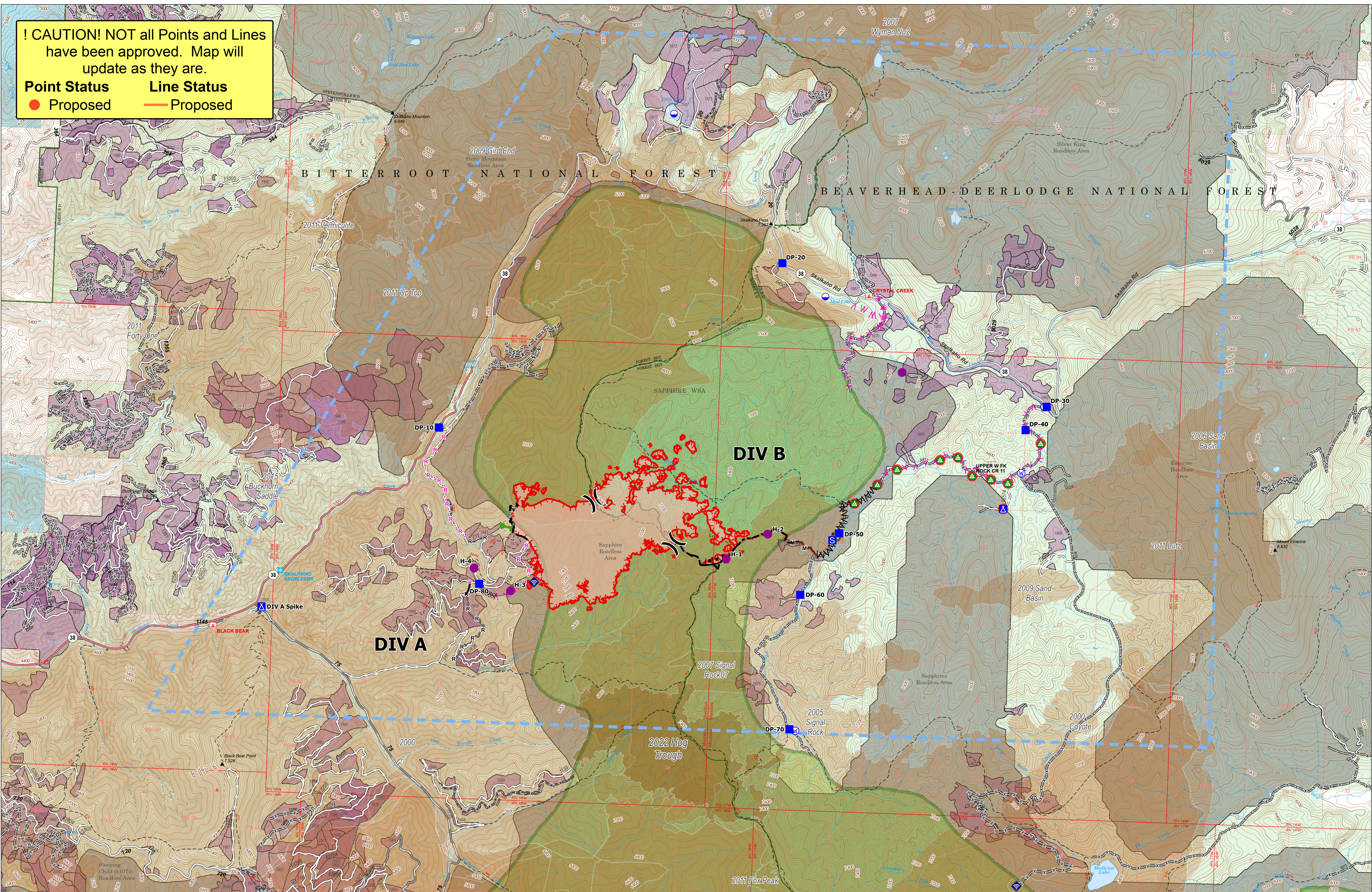


! CAUTION! NOT all Points and Lines have been approved. Map will update as they are.

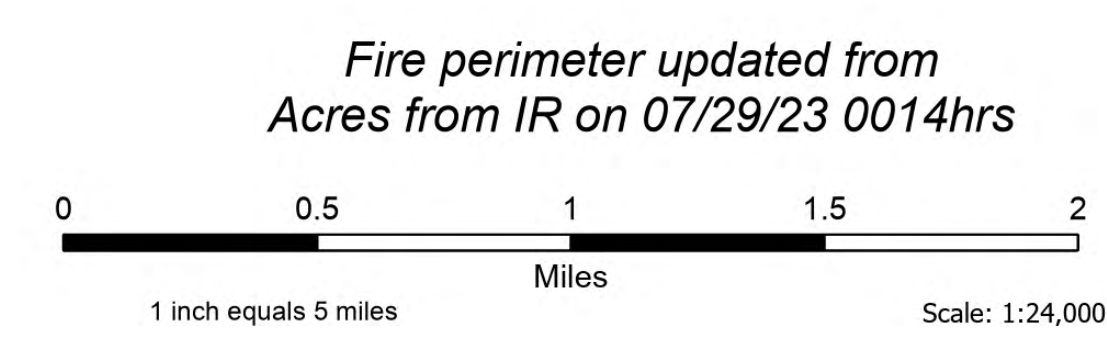
Point Status **Line Status**

● Proposed — Proposed



Operations

Bowles Creek
 MT-BDF-006210
 1714 acres
 7/31/2023



Forest Name	Burned Acres
Bitterroot National Forest	1164.5
Beaverhead-Deerlodge National Forest	549.1

- Structure
- Dip Site
- Helispot
- ✕ Division Break
- Drop Point
- Camp
- Staging Area
- Water Development or Draft Site
- Landing or Log Deck

- ◆ Internet Access
- Water Source
- Completed Burnout
- ✕ Completed Dozer Line
- ▭ Completed Fuel Break
- ▭ Completed Hand Line
- ▭ Completed Mixed Construction Line
- ▭ Completed Road as Line
- ▭ Planned Fuel Break

- H Planned Hand Line
- R Planned Road as Line
- Other
- Escape Route
- Temporary Flight Restriction
- Uncontained
- Wildfire Daily Fire Perimeter
- Secondary Highway
- State Road (Dirt)

- Secondary Dirt
- Gravel Road
- Dirt Road
- Unimproved Road
- Forest Service Roads Closed
- USFS Roadless Areas
- FS Wilderness Study Area Boundary
- Forest Service Land
- Bureau of Land Management Lands

- State Lands
- Past Timber Harvest Year
- Labeled with Year Completed

- NIFC Historic Fire Perimeters 2020-2022**
- 2022
 - 2015
 - 2011
 - 2009
 - 2007
 - 2006
 - 2005
 - 2000

