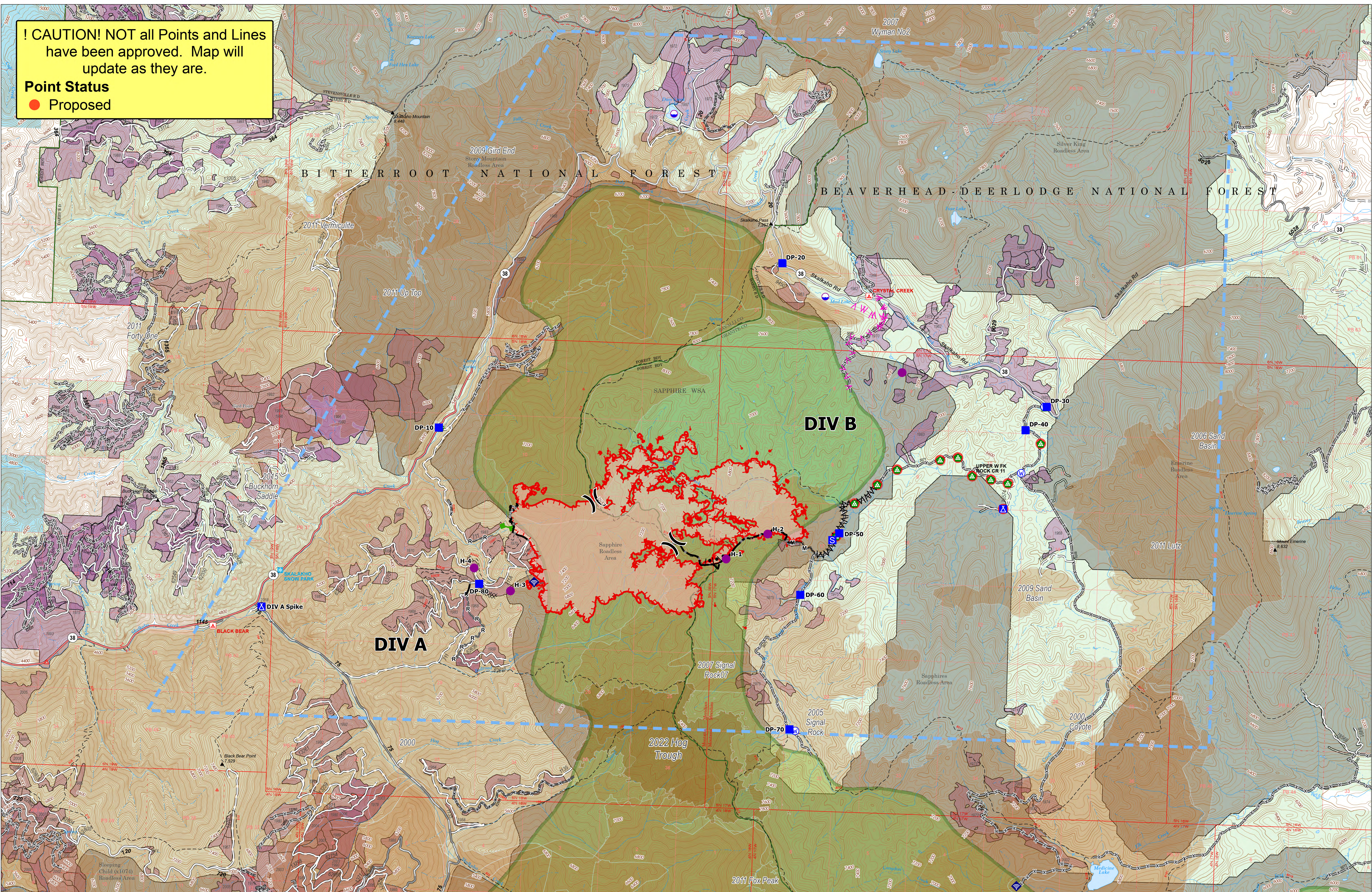


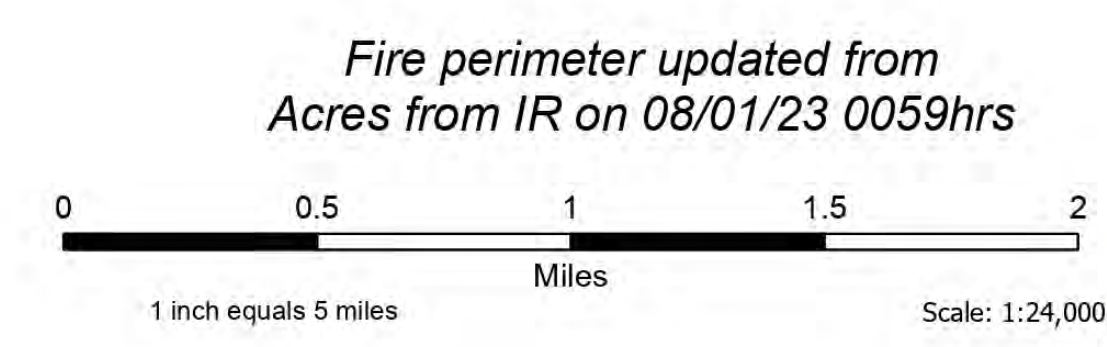
! CAUTION! NOT all Points and Lines have been approved. Map will update as they are.

Point Status
● Proposed



Operations

Bowles Creek
 MT-BDF-006210
 2876 acres
 8/1/2023



Forest Name	Burned Acres
Bitterroot National Forest	1607.7
Beaverhead-Deerlodge National Forest	1267.9

- Structure
- Dip Site
- Helispot
- x Division Break
- Drop Point
- Camp
- Staging Area
- Water Development or Draft Site
- Landing or Log Deck
- ◆ Internet Access
- Water Source
- Completed Burnout
- x Completed Dozer Line
- Completed Fuel Break
- Completed Hand Line
- Completed Mixed Construction Line
- Completed Road as Line
- Planned Fuel Break
- Other
- Escape Route
- Temporary Flight Restriction
- Uncontained
- Wildfire Daily Fire Perimeter
- Secondary Highway
- State Road (Dirt)
- Secondary Dirt
- Gravel Road
- Dirt Road
- Unimproved Road
- Forest Service Roads Closed
- USFS Roadless Areas
- FS Wilderness Study Area Boundary
- Forest Service Land
- Bureau of Land Management Lands
- State Lands
- Past Timber Harvest Year**
- Labeled with Year Completed
- NIFC Historic Fire Perimeters 2020-2022**
- 2022
- 2015
- 2011
- 2009
- 2007
- 2006
- 2005
- 2000

