

DIV A Operations

Bowles Creek
MT-BDF-006210
6,847 acres
08/19/2023

Fire perimeter updated from IR on 08/17/23 2306 MDT

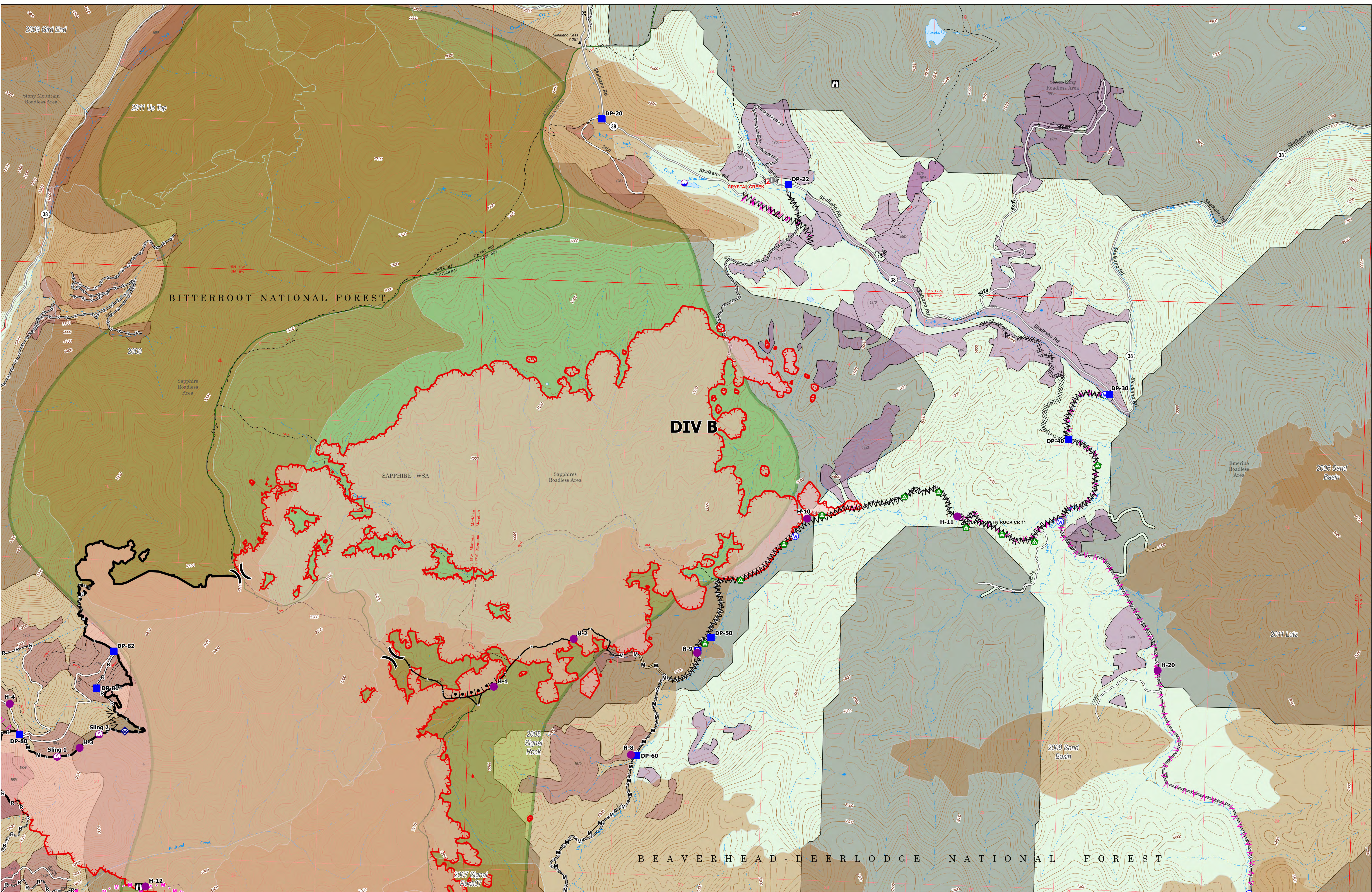
Forest Name	Burned Acres
Bitterroot National Forest	3243.9
Beaverhead-Deerlodge National Forest	3603.5



- Structure
- Dip Site
- Helispot
- Sling Site
- Division Break
- Drop Point
- Camp
- Lookout
- Value at Risk
- Gate
- Bridge
- Water Development or Draft Site
- Internet Access
- Water Source
- Completed Burnout
- Completed Fuel Break
- Completed Hand Line
- Completed Mixed Construction Line
- Completed Road as Line
- Planned Fuel Break
- Planned Hand Line
- Planned Mixed Construction Line
- Temporary Flight Restriction
- Contained
- Uncontained
- Wildfire Daily Fire Perimeter
- Secondary Highway
- Gravel Road
- Dirt Road
- Unimproved Road
- Forest Service Roads Closed

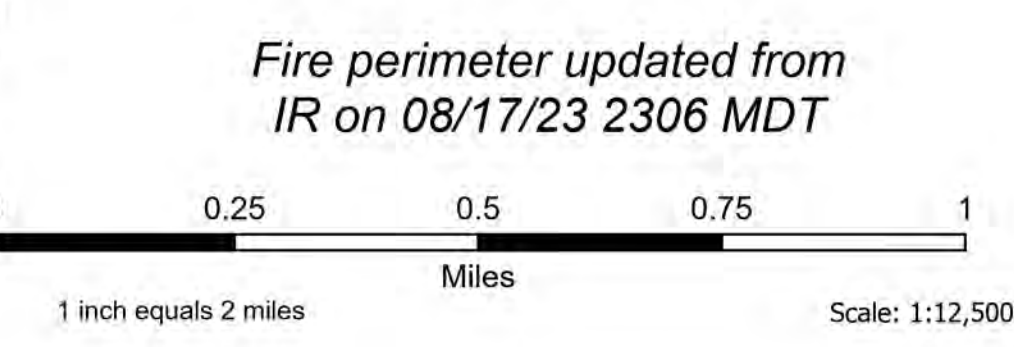
- Past Timber Harvest Year**
- Labeled with Year Completed
- Historical Fire Perimeters 2000-2022**
- 2022
 - 2015
 - 2011
 - 2007
 - 2005
 - 2000





DIV B Operations

Bowles Creek
 MT-BDF-006210
 6,847 acres
 08/19/2023



Forest Name	Burned Acres
Bitterroot National Forest	3243.9
Beaverhead-Deerlodge National Forest	3603.5



- Structure
- Dip Site
- Helispot
- Sling Site
- Division Break
- Staging Area
- Lookout
- Bridge
- Water Development or Draft Site
- Landing or Log Deck
- Internet Access
- Water Source
- Completed Burnout
- Completed Dozer Line
- Completed Fuel Break
- Completed Hand Line
- Completed Mixed Construction Line
- Completed Road as Line
- Planned Fuel Break
- Planned Mixed Construction Line
- Contained
- Uncontained
- Wildfire Daily Fire Perimeter
- Secondary Highway
- State Road (Dirt)
- Trail
- Dirt Road
- Unimproved Road
- Forest Service Roads Closed
- Labeled with Year Completed

- ### Historical Fire Perimeters 2000-2022
- 2011
 - 2009
 - 2007
 - 2006
 - 2005
 - 2000
- ### Past Timber Harvest Year
- Labeled with Year Completed

