

DIV B Operations

Bowles Creek
MT-BDF-006210
6,847 acres
08/20/2023

Fire perimeter updated from IR on 08/17/23 2306 MDT

0 0.25 0.5 0.75 1
1 inch equals 2 miles
Scale: 1:12,500

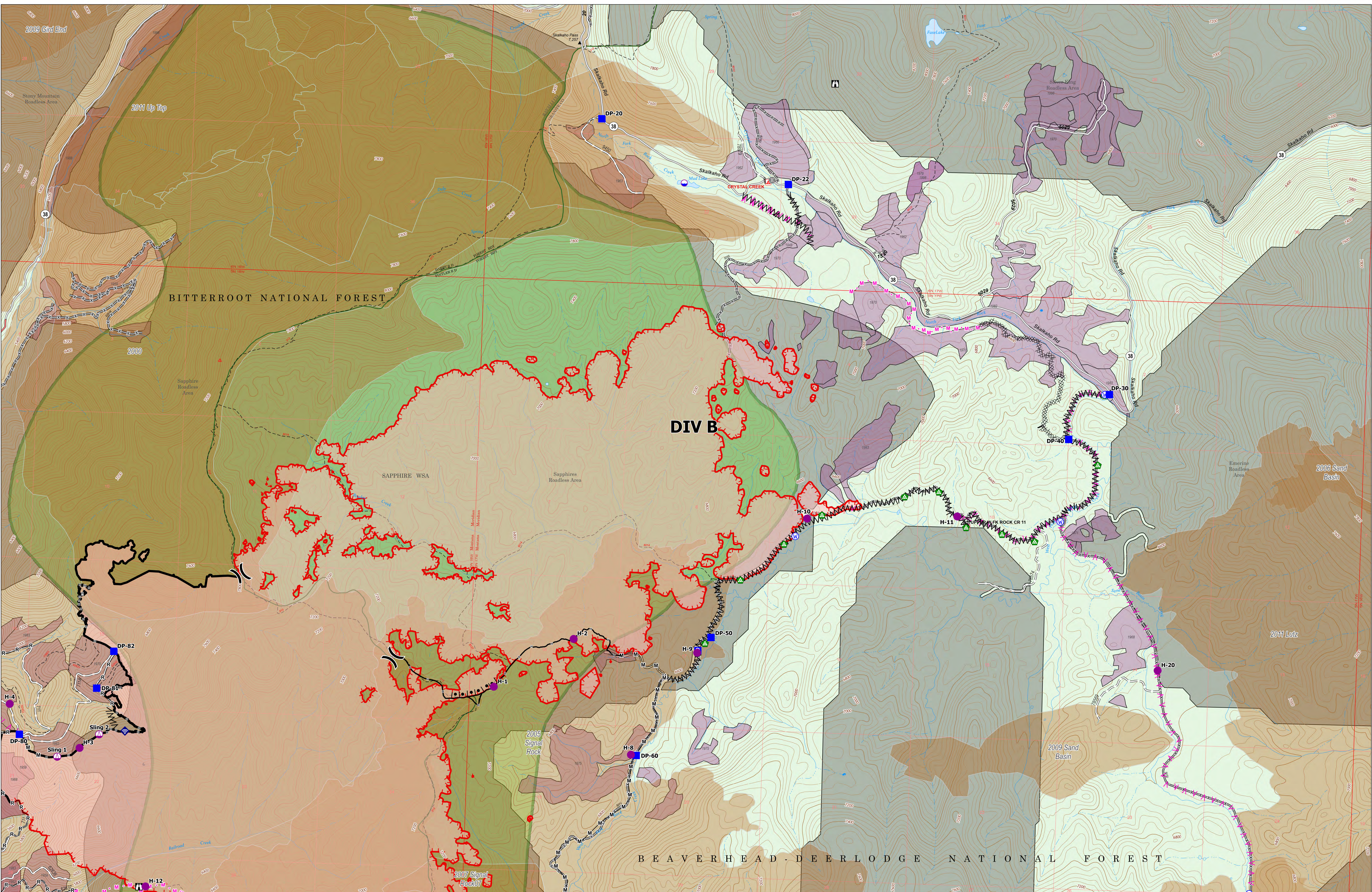
Forest Name	Burned Acres
Bitterroot National Forest	3243.9
Beaverhead-Deerlodge National Forest	3603.5



- Structure
- Dip Site
- Helispot
- Sling Site
- ✕ Division Break
- Drop Point
- Camp
- Lookout
- Value at Risk
- Gate
- Bridge
- Water Development or Draft Site
- ◆ Internet Access
- Water Source
- Completed Burnout
- Completed Fuel Break
- Completed Hand Line
- Completed Mixed Construction Line
- Completed Road as Line
- Planned Fuel Break
- Planned Hand Line
- Planned Mixed Construction Line
- Temporary Flight Restriction
- Contained
- Uncontained
- Wildfire Daily Fire Perimeter
- Secondary Highway
- Gravel Road
- Dirt Road
- Unimproved Road
- Forest Service Roads Closed

- Past Timber Harvest Year**
- Labeled with Year Completed
- Historical Fire Perimeters 2000-2022**
- 2022
 - 2015
 - 2011
 - 2007
 - 2005
 - 2000





DIV B Operations

Bowles Creek
MT-BDF-006210
6,847 acres
08/20/2023

Fire perimeter updated from IR on 08/17/23 2306 MDT

Forest Name	Burned Acres
Bitterroot National Forest	3243.9
Beaverhead-Deerlodge National Forest	3603.5



- Structure
- Dip Site
- Helispot
- Sling Site
- Division Break
- Staging Area
- Lookout
- Bridge
- Water Development or Draft Site
- Landing or Log Deck
- Internet Access
- Water Source
- Completed Burnout
- Completed Dozer Line
- Completed Fuel Break
- Completed Hand Line
- Completed Mixed Construction Line
- Completed Road as Line
- Planned Fuel Break
- Planned Mixed Construction Line
- Contained
- Uncontained
- Wildfire Daily Fire Perimeter
- Secondary Highway
- State Road (Dirt)
- Trail
- Dirt Road
- Unimproved Road
- Forest Service Roads Closed
- Labeled with Year Completed

Historical Fire Perimeters 2000-2022

- 2011
- 2009
- 2007
- 2006
- 2005
- 2000

Past Timber Harvest Year

- 2011
- 2009
- 2007
- 2006
- 2005
- 2000

