

## DIV B Operations

Bowles Creek  
 MT-BDF-006210  
 6,847 acres  
 08/21/2023

Fire perimeter updated from  
 IR on 08/17/23 2306 MDT

0 0.25 0.5 0.75 1  
 1 inch equals 2 miles  
 Scale: 1:12,500

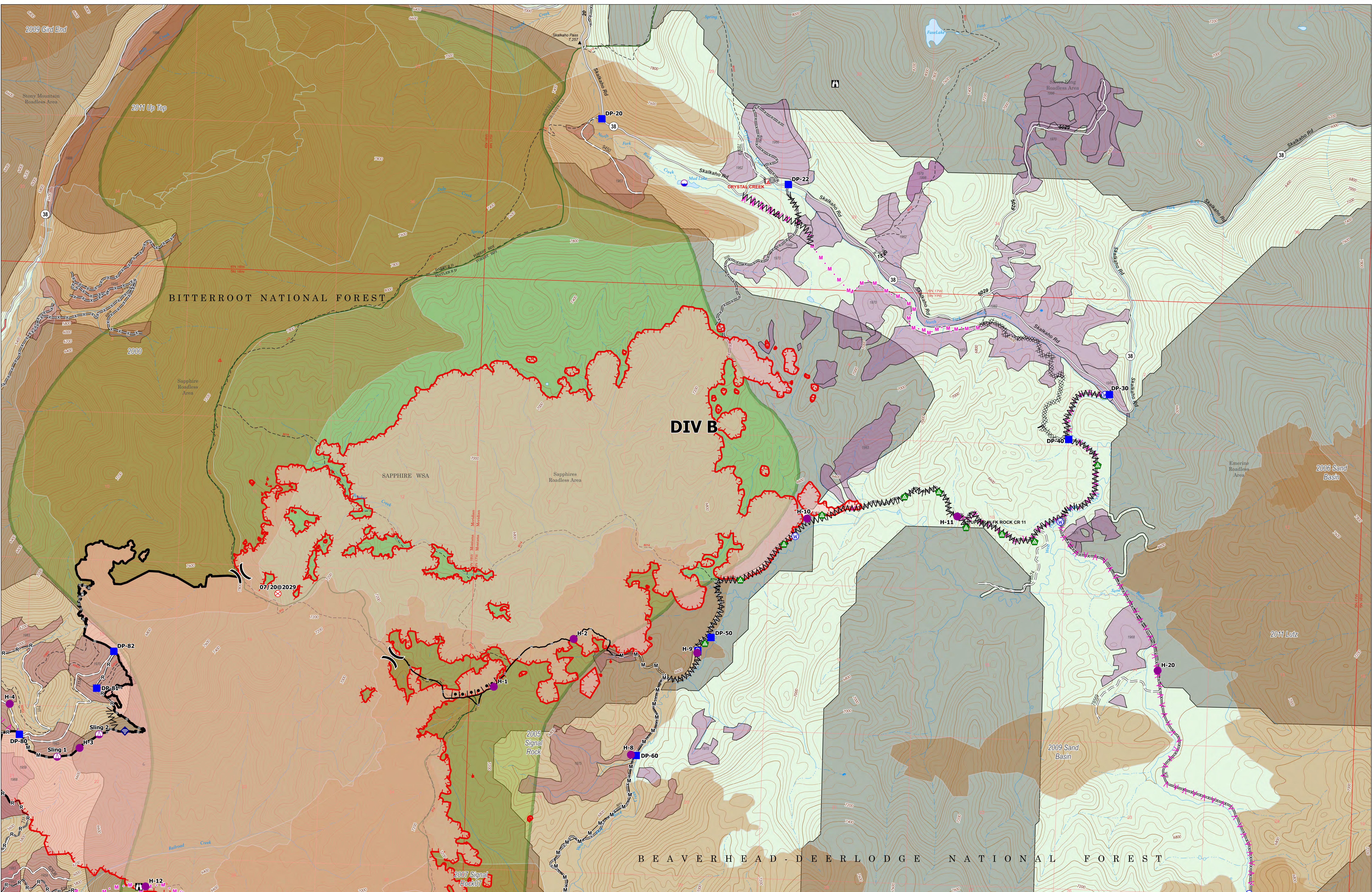
Forest Name	Burned Acres
Bitterroot National Forest	3243.9
Beaverhead-Deerlodge National Forest	3603.5



- Structure
- Dip Site
- Helispot
- Sling Site
- Division Break
- Drop Point
- Camp
- Lookout
- Fire Origin
- Value at Risk
- Gate
- Bridge
- Water Development or Draft Site
- Internet Access
- Water Source
- Completed Burnout
- Completed Fuel Break
- Completed Hand Line
- Completed Mixed Construction Line
- Completed Road as Line
- Planned Fuel Break
- Planned Hand Line
- Planned Mixed Construction Line
- Temporary Flight Restriction
- Contained
- Uncontained
- Wildfire Daily Fire Perimeter
- Secondary Highway
- Trail
- Gravel Road
- Dirt Road
- Unimproved Road
- Forest Service Roads Closed
- Past Timber Harvest Year
- Labeled with Year Completed

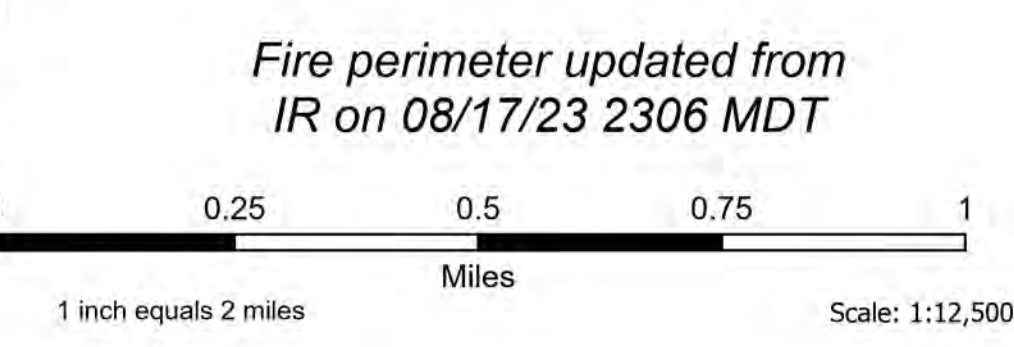
- Historical Fire Perimeters 2000-2022**
- 2022
  - 2015
  - 2011
  - 2007
  - 2005
  - 2000





# DIV B Operations

Bowles Creek  
MT-BDF-006210  
6,847 acres  
08/21/2023



Forest Name	Burned Acres
Bitterroot National Forest	3243.9
Beaverhead-Deerlodge National Forest	3603.5



- Structure
- Dip Site
- Helispot
- Sling Site
- ⌘ Division Break
- Drop Point
- Staging Area
- Lookout
- ⊙ Fire Origin
- Bridge
- Water Development or Draft Site
- Landing or Log Deck
- Internet Access
- Water Source
- ⌘ Completed Burnout
- ⌘ Completed Dozer Line
- ⌘ Completed Fuel Break
- ⌘ Completed Hand Line
- Completed Mixed Construction Line
- Completed Road as Line
- ▲ Planned Fuel Break
- Planned Mixed Construction Line
- Other
- Contained
- Uncontained
- Wildfire Daily Fire Perimeter
- Secondary Highway
- State Road (Dirt)
- Trail
- Dirt Road
- Unimproved Road
- Forest Service Roads Closed
- Labeled with Year Completed
- Historical Fire Perimeters 2000-2022
- 2011
- 2009
- 2007
- 2006
- 2005
- 2000

