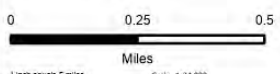


Operations

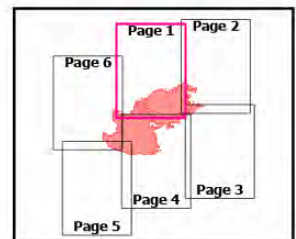
Div B

Bowles Creek
 MT-BDF-006210
 6,847 acres
 8/21/2023

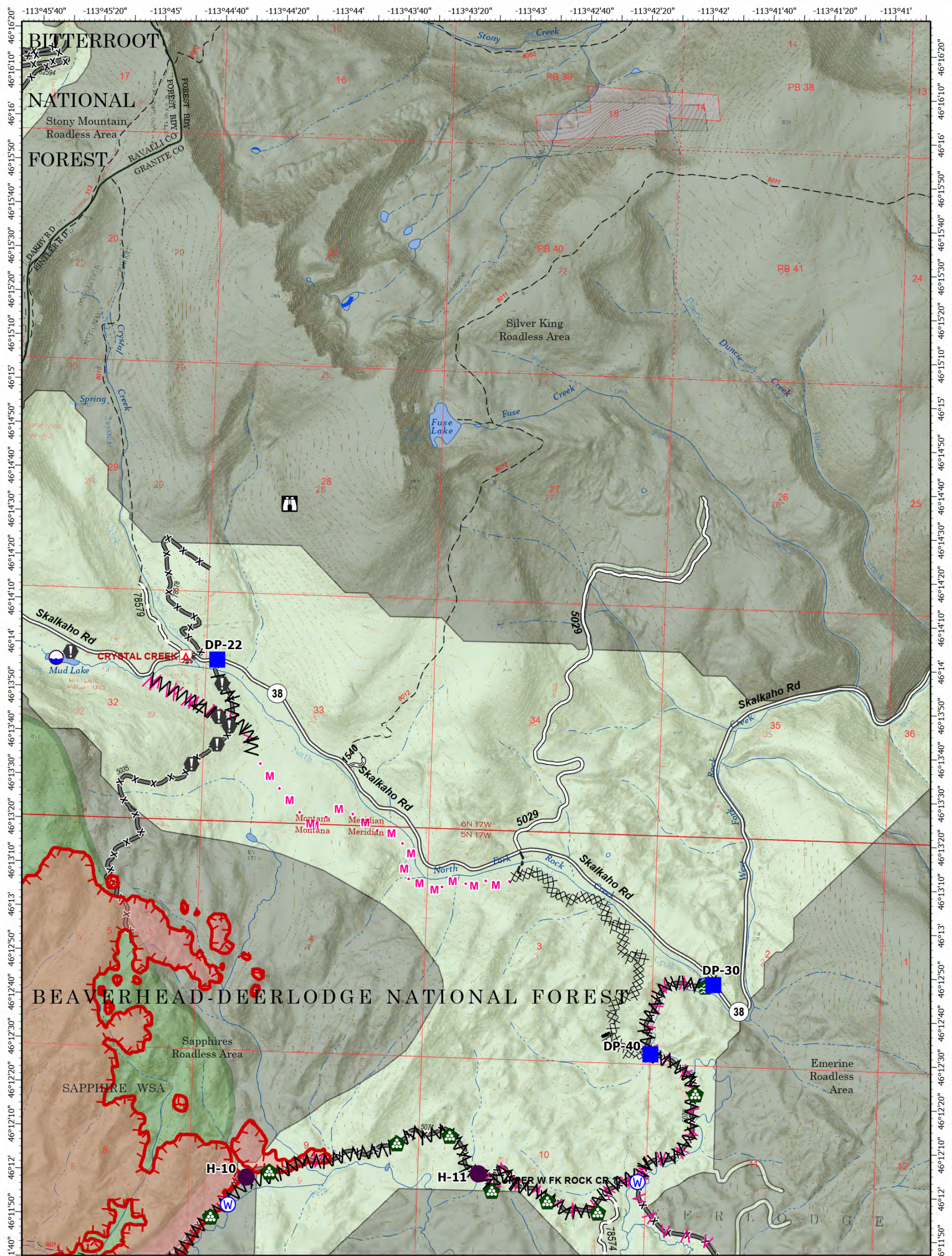
Fire perimeter updated from
 IR on 08/17/23 2306 MDT



- Label Point
- ⊙ Dip Site
- ✕ Division Break
- Drop Point
- Value at Risk
- ▬ Contained
- ▬ Uncontained
- ▬ Wildfire Daily Fire Perimeter
- ⤵ Dirt Road
- ⤵ Unimproved Road
- ⤵ Forest Service Roads Closed
- ▬ FS Wilderness Study Area Boundary
- ▬ State Boundary
- ▬ County Boundary
- ▬ FS Wilderness Study Area
- ▬ USFS Roadless Areas
- ▬ Forest Service Land



Remote Incident
 Support Team
 8/21/2023 11:21
 North American 1983
 Datum, Lat,Long Grid



Operations

Div B
 Bowles Creek
 MT-BDF-006210
 6,847 acres
 8/21/2023

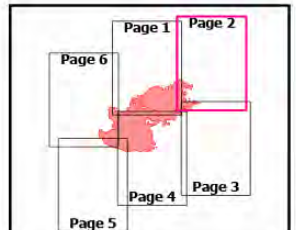
Fire perimeter updated from
 IR on 08/17/23 2306 MDT



- Label Point
- Dip Site
- Helispot
- Drop Point
- Lookout
- Value at Risk
- ⊕ Water Development or Draft Site
- ⊕ Landing or Log Deck
- ⊕ Water Source
- ⊗ Completed Dozer Line

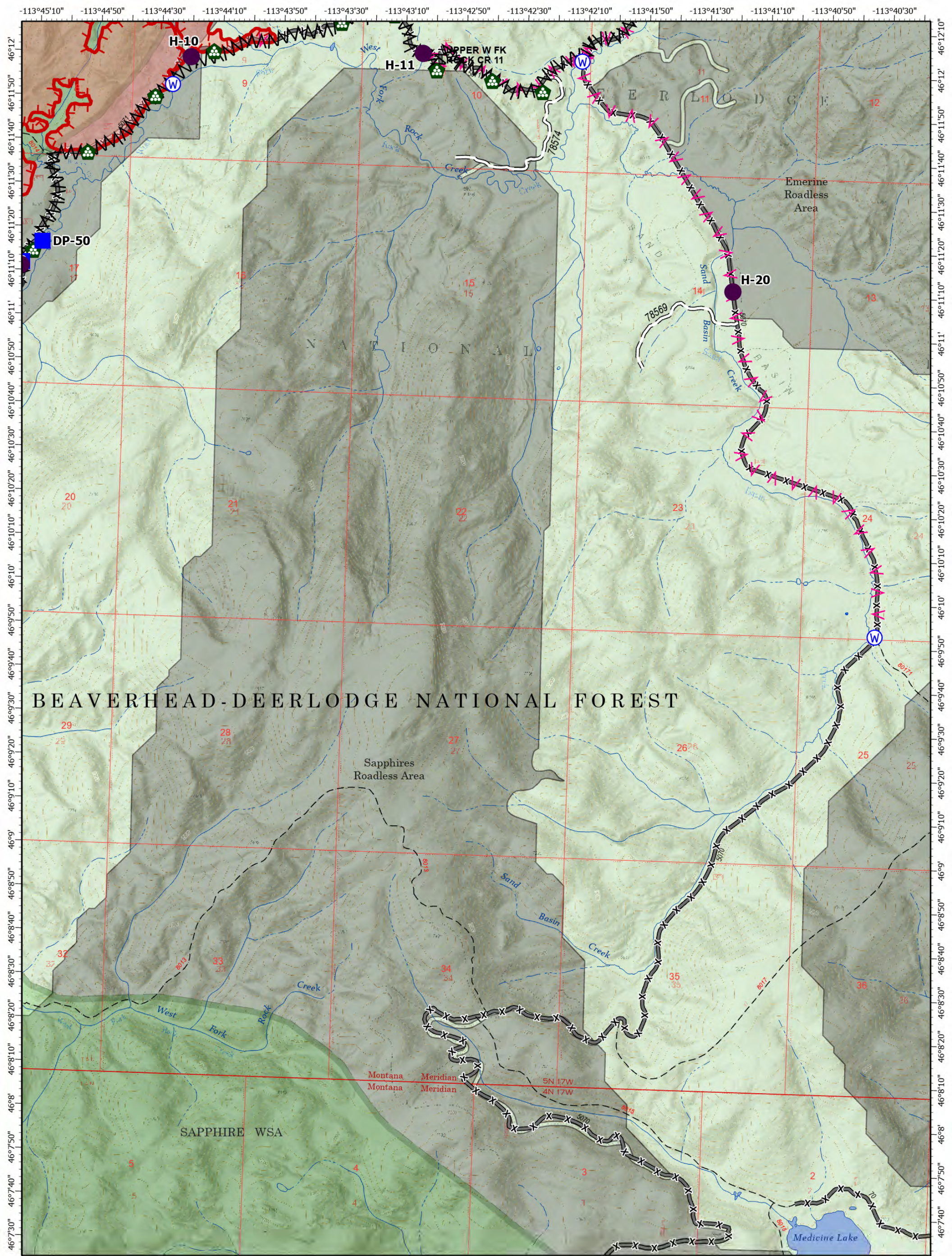
- ▲ Completed Fuel Break
- ▬ Completed Hand Line
- ▲ Planned Fuel Break
- ⋈ Planned Mixed Construction Line
- Other
- ⌞ Uncontained
- ⬮ Wildfire Daily Fire Perimeter
- ⬮ Campground
- ⬮ Trailhead
- ⌘ Dirt Road

- ⋈ Unimproved Road
- ⌘ Forest Service Roads Closed
- ▬ FS Wilderness Study Area Boundary
- ▬ State Boundary
- ▬ County Boundary
- ▬ FS Wilderness Study Area
- ▬ USFS Roadless Areas
- ▬ Forest Service Land



Remote Incident
 Support Team
 8/21/2023 11:21
 North American 1983
 Datum, Lat,Long Grid

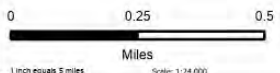
Operations



Operations

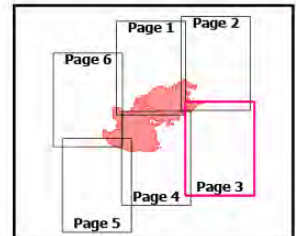
Div B
 Bowles Creek
 MT-BDF-006210
 6,847 acres
 8/21/2023

Fire perimeter updated from
 IR on 08/17/23 2306 MDT

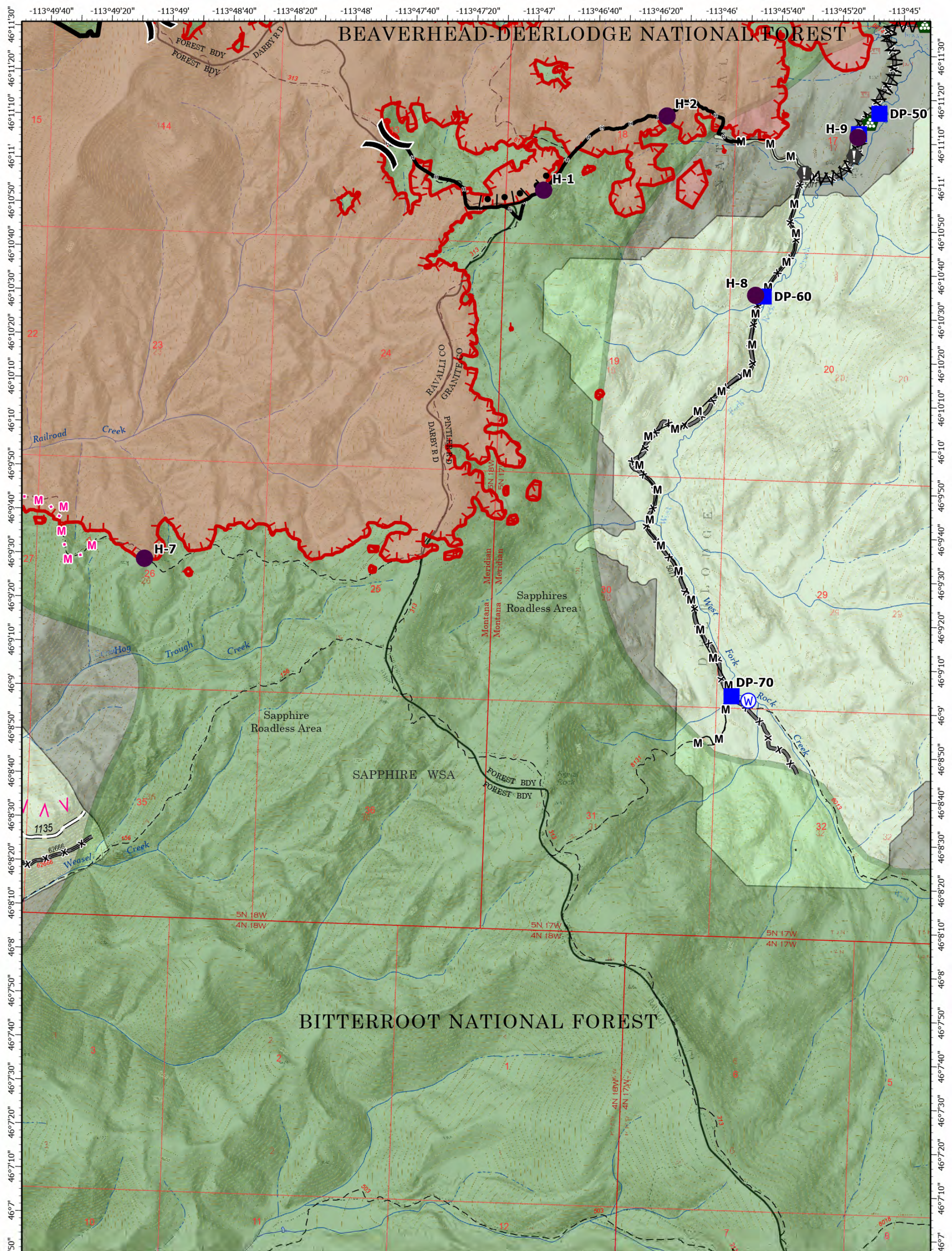


- Helispot
- Drop Point
- Staging Area
- ⬤ Value at Risk
- ⬤ Landing or Log Deck
- ⊙ Water Source
- ▲ Completed Fuel Break
- ▲ Planned Fuel Break
- ▬ Uncontained
- ▬ Wildfire Daily Fire Perimeter
- ▬ Structure
- ⊙ Trailhead
- ⊙ Unimproved Road
- ⊙ Forest Service Roads Closed

- ▬ FS Wilderness Study Area Boundary
- ▬ State Boundary
- ▬ County Boundary
- ▬ FS Wilderness Study Area
- ▬ USFS Roadless Areas
- ▬ Forest Service Land



Remote Incident
 Support Team
 8/21/2023 11:21
 North American 1983
 Datum, Lat, Long Grid

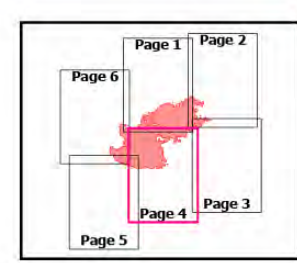


Operations
Div B
 Bowles Creek
 MT-BDF-006210
 6,847 acres
 8/21/2023

Fire perimeter updated from
 IR on 08/17/23 2306 MDT

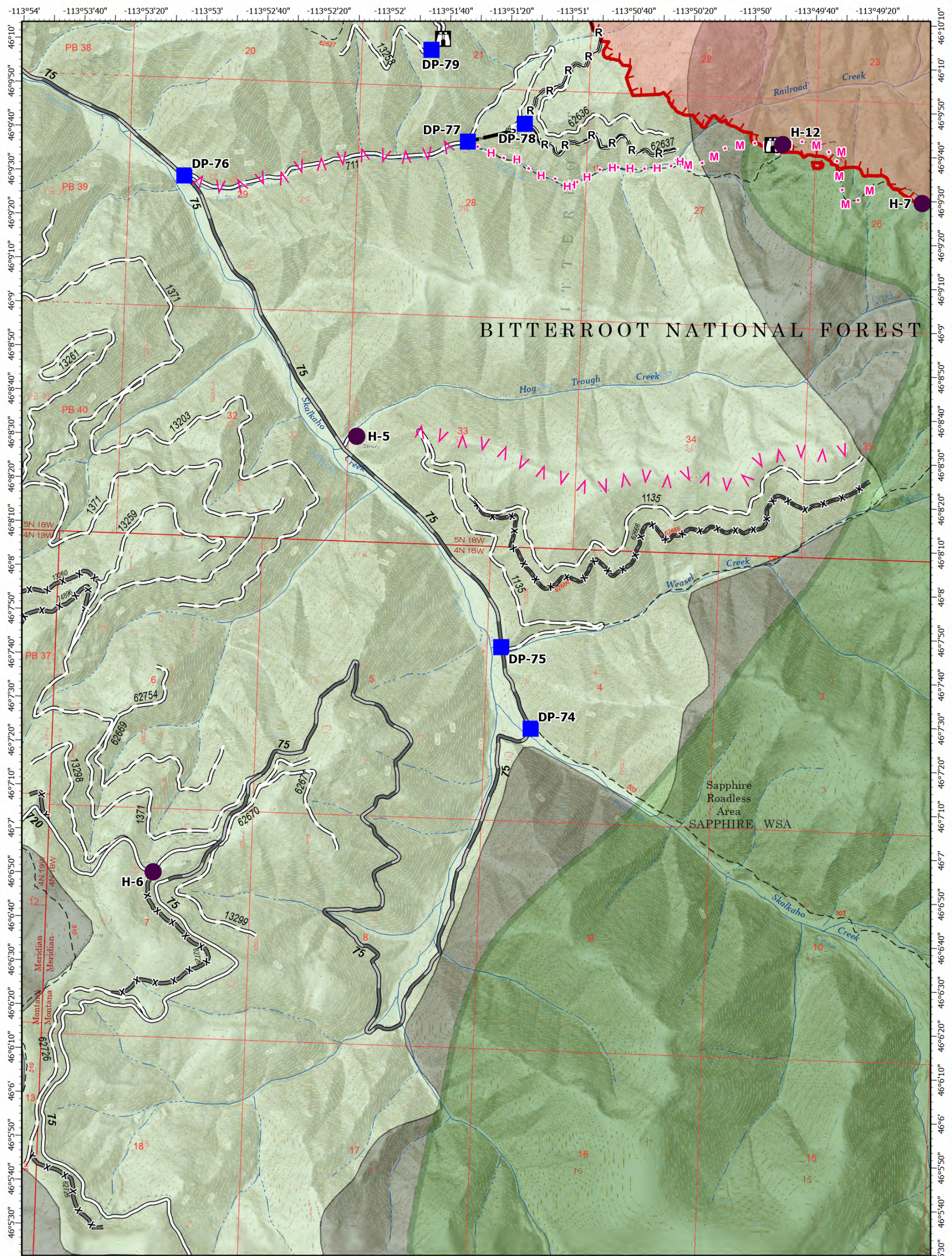


- | | | |
|------------------------|-------------------------------------|-------------------------------------|
| ● Helispot | — Completed Hand Line | ⊗ Forest Service Roads Closed |
| × Division Break | — Completed Mixed Construction Line | ▭ FS Wilderness Study Area Boundary |
| ■ Drop Point | ▲ Planned Fuel Break | ⊔ State Boundary |
| ■ Staging Area | ⊕ Planned Mixed Construction Line | ⊔ County Boundary |
| ● Value at Risk | ■ Contained | ▭ FS Wilderness Study Area |
| ⊕ Landing or Log Deck | — Uncontained | ▭ USFS Roadless Areas |
| ⊕ Water Source | — Wildfire Daily Fire Perimeter | ▭ Forest Service Land |
| — Completed Burnout | ■ Structure | |
| ▲ Completed Fuel Break | ~ Unimproved Road | |



Remote Incident
 Support Team
 8/21/2023 1121
 North American 1983
 Datum: Lat/Long Grid

Operations



Operations

Div A
 Bowles Creek
 MT-BDF-006210
 6,847 acres
 8/21/2023

Fire perimeter updated from
 IR on 08/17/23 2306 MDT

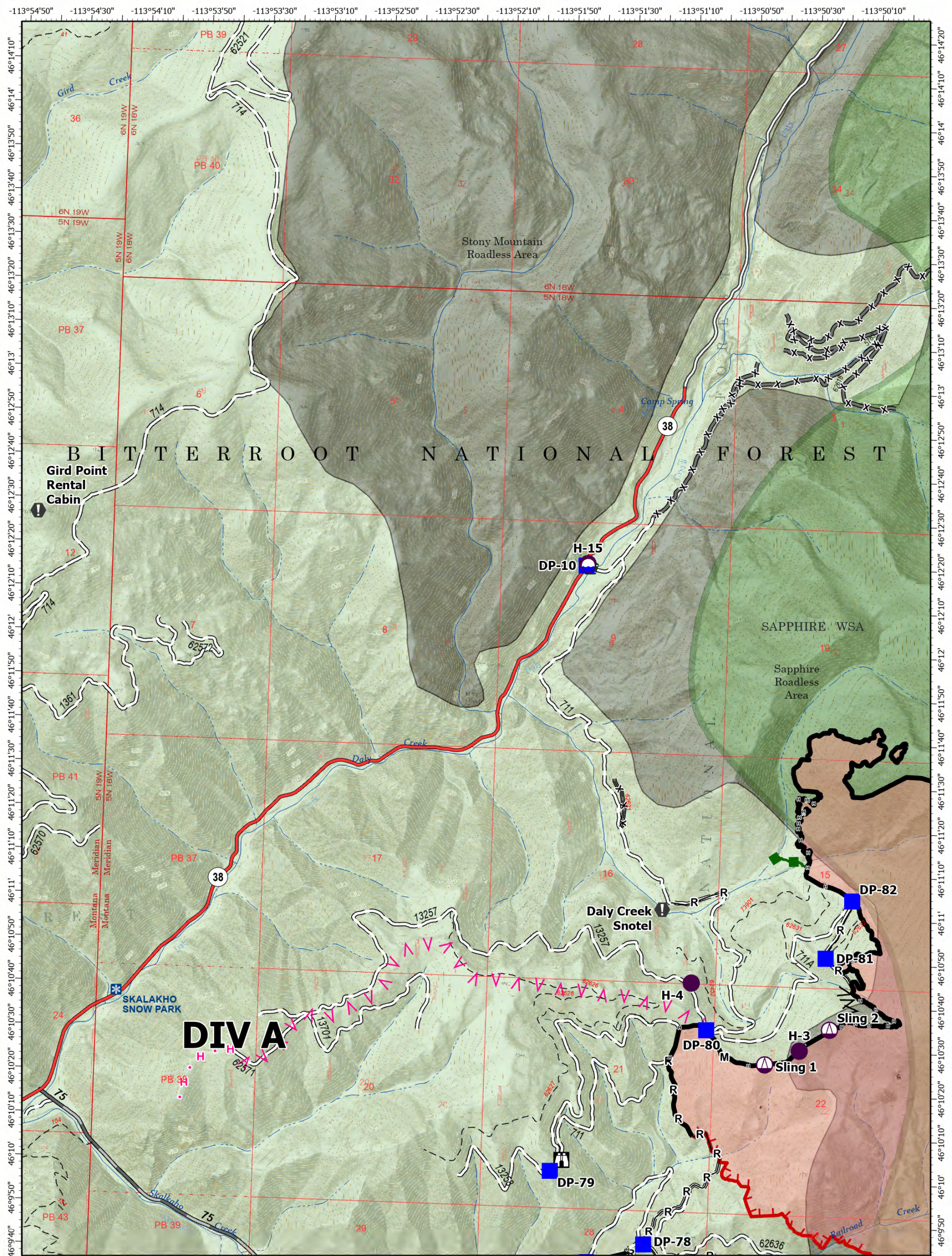


- Helispot
- Drop Point
- ⊠ Lookout
- ▬ Completed Hand Line
- R- Completed Road as Line
- ▲ Planned Fuel Break
- ⊠ Planned Hand Line
- ⊠ Planned Mixed Construction Line
- ▬ Uncontained
- ▬ Wildfire Daily Fire Perimeter
- ⊠ Gravel Road
- ⊠ Dirt Road
- ⊠ Unimproved Road
- ⊠ Forest Service Roads Closed
- ▬ FS Wilderness Study Area Boundary
- ▬ State Boundary
- ▬ County Boundary
- ▬ FS Wilderness Study Area
- ▬ USFS Roadless Areas
- ▬ Forest Service Land



Remote Incident
 Support Team
 8/21/2023 1122
 North American 1983
 Datum, Lat,Long Grid

Operations



Operations

Div A
 Bowles Creek
 MT-BDF-006210
 6,847 acres
 8/21/2023

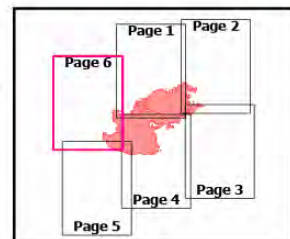
Fire perimeter updated from
 IR on 08/17/23 2306 MDT



- Label Point
- Dip Site
- Helispot
- Sling Site
- Drop Point
- ⊠ Lookout
- ⊙ Value at Risk
- ⊙ Water Development or Draft Site
- ▲ Completed Fuel Break
- Completed Hand Line

- M- Completed Mixed Construction Line
- R- Completed Road as Line
- ▲ Planned Fuel Break
- Planned Hand Line
- Escape Route
- Contained
- Uncontained
- Wildfire Daily Fire Perimeter
- Structure
- Snowpark

- Gravel Road
- Unimproved Road
- Forest Service Roads Closed
- FS Wilderness Study Area Boundary
- State Boundary
- County Boundary
- FS Wilderness Study Area
- USFS Roadless Areas
- Forest Service Land



Remote Incident
 Support Team
 8/21/2023 11:22
 North American 1983
 Datum, Lat, Long Grid