

Operations Custom

Bowles Creek
MT-BDF-006210
6,847 acres
8/22/2023

Fire perimeter updated from
IR on 08/17/23 2306 MDT

- Dip Site
- Helispot
- Drop Point
- Staging Area
- Lookout
- Value at Risk
- Bridge
- Water Development or Draft Site
- Landing or Log Deck
- Water Source
- Completed Dozer Line
- Completed Fuel Break
- Completed Hand Line
- Completed Mixed Construction Line
- Planned Fuel Break
- Planned Mixed Construction Line
- Other
- Temporary Flight Restriction
- Contained
- Uncontained
- State Road (Dirt)
- Dirt Road
- Unimproved Road
- Forest Service Roads Closed
- FS Wilderness Study Area Boundary

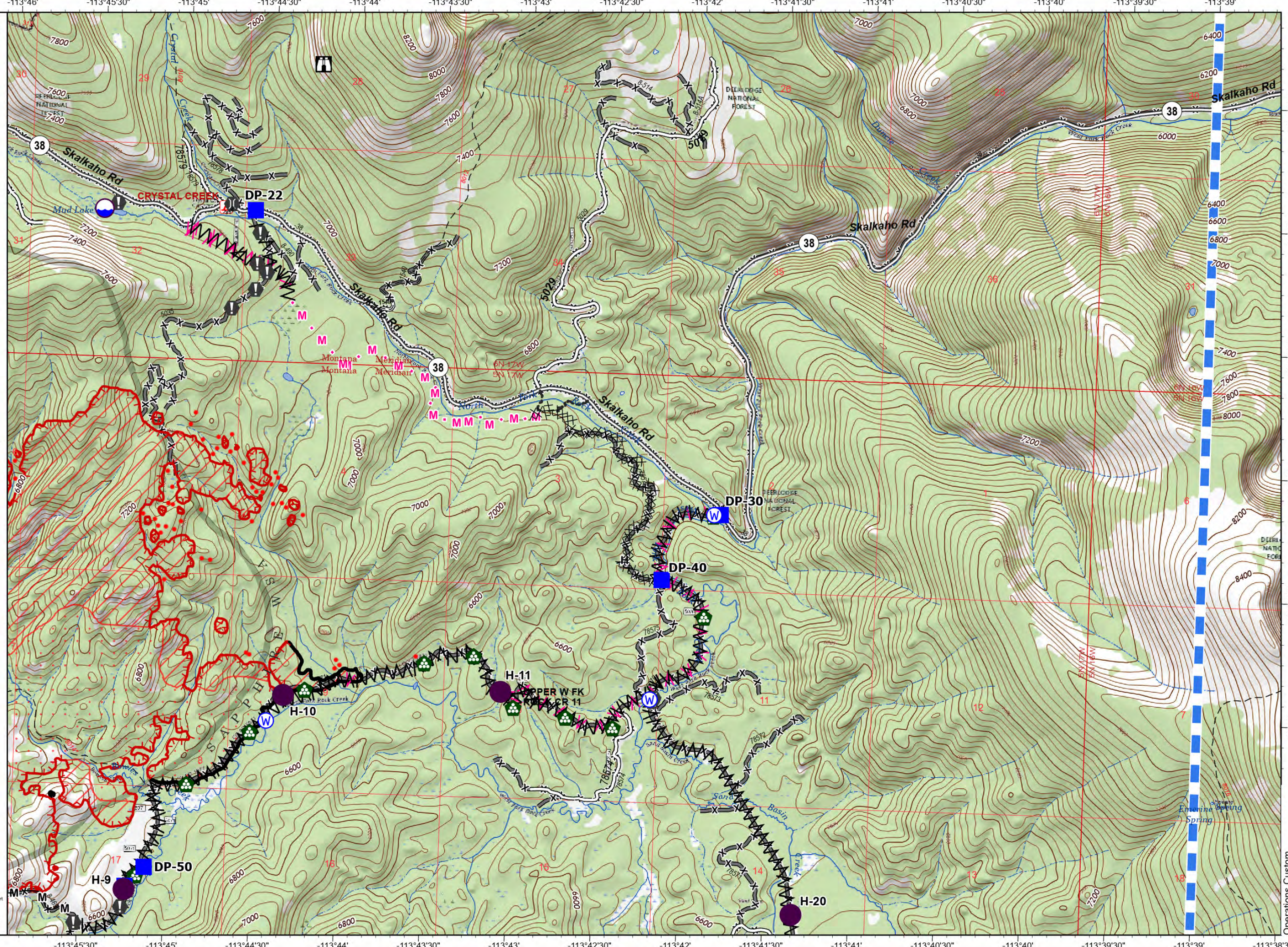
Map Contains
Approved and
Proposed Features



0 0.3 0.6
Miles
Scale: 1:25,000



Remote Incident Support
Team
8/22/2023 1332
North American 1983
Datum: LatLong Grid



Operations Custom