

DIV A Operations

Bowles Creek
 MT-BDF-006210
 6985 acres
 8/24/2023

Fire perimeter updated from
 IR on 08/23/23 @2152 MST

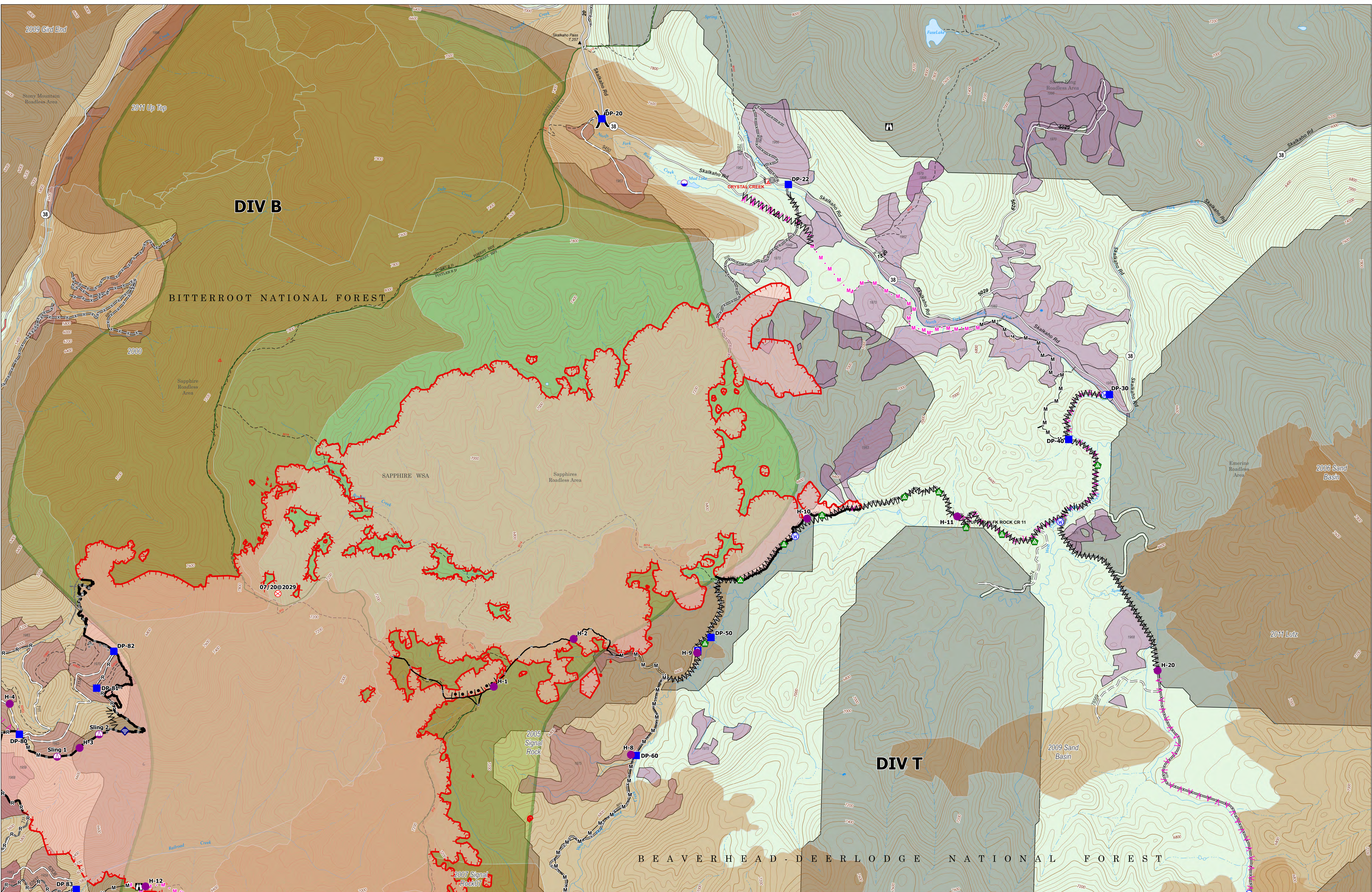
0 0.25 0.5 0.75 1
 1 inch equals 2 miles
 Scale: 1:12,500



- Structure
- Dip Site
- Helispot
- Sling Site
- Division Break
- Drop Point
- Camp
- Lookout
- Fire Origin
- Value at Risk
- Gate
- Bridge
- Water Development or Draft Site
- Internet Access
- Water Source
- Completed Burnout
- Completed Fuel Break
- Completed Hand Line
- Completed Mixed Construction Line
- Completed Road as Line
- Planned Fuel Break
- Planned Hand Line
- Planned Mixed Construction Line
- Other
- Temporary Flight Restriction
- Contained
- Uncontained
- Wildfire Daily Fire Perimeter
- Secondary Highway
- Gravel Road
- Dirt Road
- Unimproved Road
- Forest Service Roads Closed
- Past Timber Harvest Year
- Labeled with Year Completed

- Historical Fire Perimeters 2000-2022**
- 2022
 - 2015
 - 2011
 - 2007
 - 2005
 - 2000





DIV A Operations

Bowles Creek
 MT-BDF-006210
 6985 acres
 8/24/2023

Fire perimeter updated from IR on 08/23/23 @2152 MST



Forest	Burned Acres
Bitterroot NF	3262
Beaverhead-Deerlodge N	3723

- Structure
- Dip Site
- Helispot
- Sling Site
- Division Break
- Drop Point
- Staging Area
- Lookout
- Fire Origin
- Bridge
- Water Development or Draft Site
- Landing or Log Deck
- Internet Access
- Water Source
- Completed Burnout
- Completed Fuel Break
- Completed Hand Line
- Completed Mixed Construction Line
- Planned Fuel Break
- Planned Mixed Construction Line
- Other
- Contained
- Uncontained
- Wildfire Daily Fire Perimeter
- Secondary Highway
- State Road (Dirt)
- Trail
- Dirt Road
- Unimproved Road
- Forest Service Roads Closed
- Past Timber Harvest Year**
- Labeled with Year Completed
- Historical Fire Perimeters 2000-2022**
- 2007
- 2006
- 2005
- 2000
- 2011
- 2009



Operations