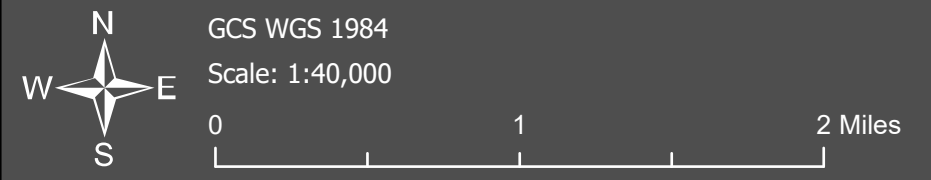
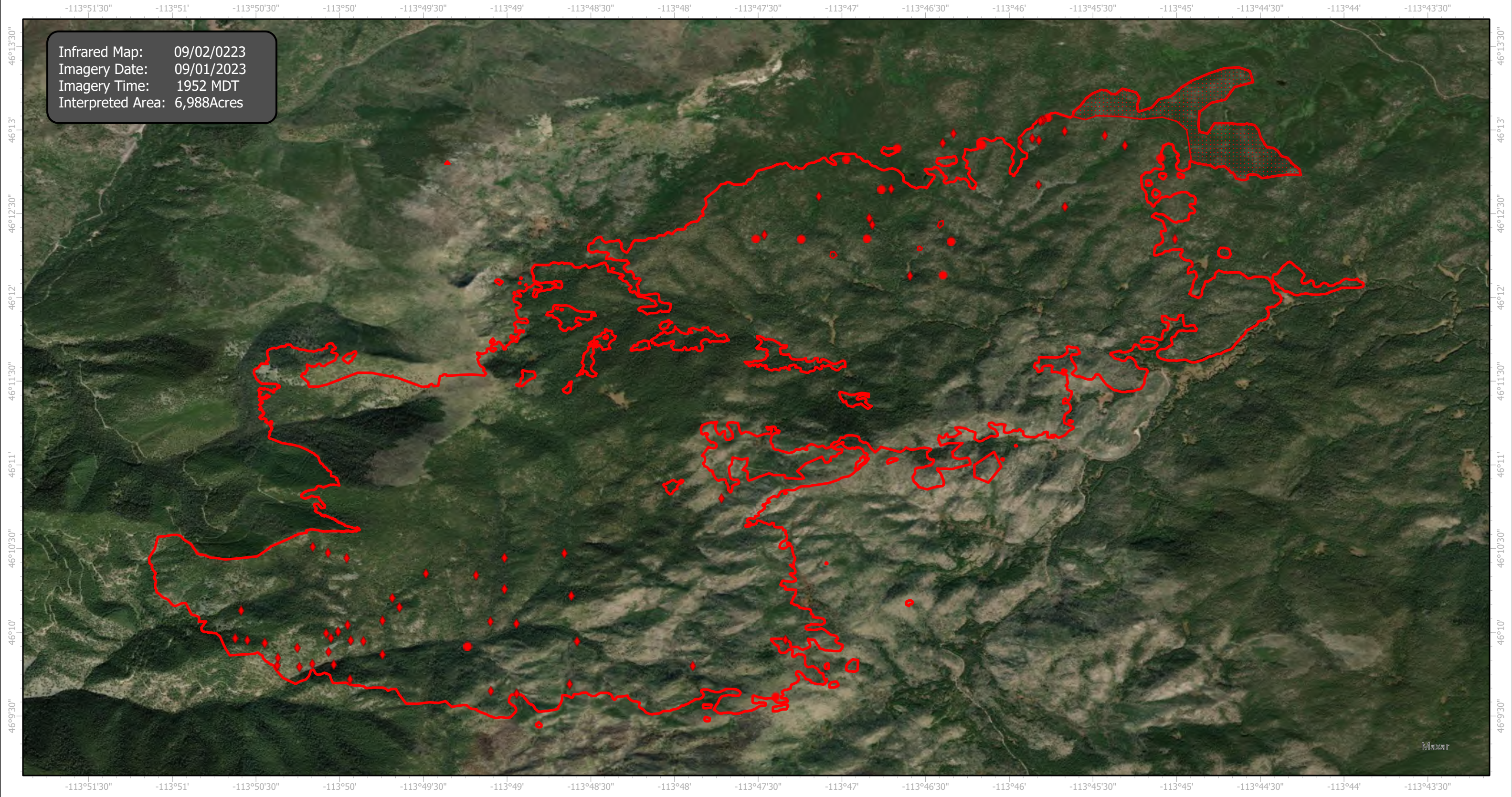


BowlesCreek Infrared Map

Incident # (MT-BDF 006210)



Infrared Map: 09/02/0223
Imagery Date: 09/01/2023
Imagery Time: 1952 MDT
Interpreted Area: 6,988Acres



- IR Isolated Heat Source
- ◆ Possible IR Heat Source
- ▭ IR Heat Perimeter
- ▨ IR Scattered Heat

Infrared Interrupter: Daniel LeVrier
email: daniel.levrier@usda.gov