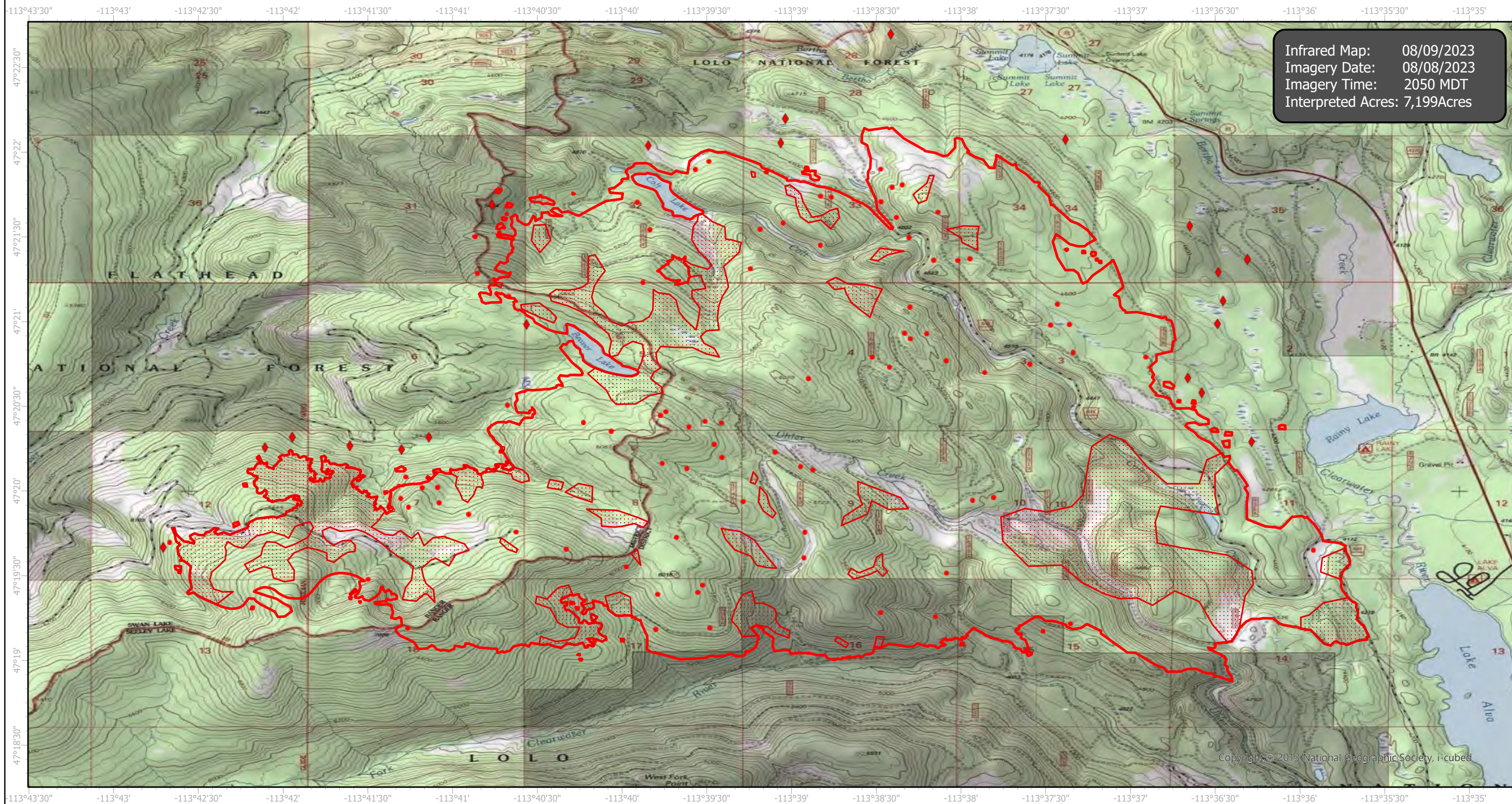
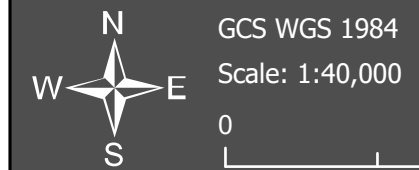


# Colt Infrared Map

Incident # (MT-SWS-200549)



Infrared Map: 08/09/2023  
Imagery Date: 08/08/2023  
Imagery Time: 2050 MDT  
Interpreted Acres: 7,199Acres



- IR Isolated Heat Source (red dot)
- IR Heat Perimeter (red outline)
- Possible IR Heat Source (red diamond)
- IR Scattered Heat (hatched area)

Infrared Interrupter: Daniel LeVrier  
email: [daniel.levrier@usda.gov](mailto:daniel.levrier@usda.gov)